

Sample Name: **Chemdawg Sweet and Sour Primary**
Tested for: **OM Extracts**
Compliance Concentrate

Laboratory ID: 18F0016-03

Matrix: Extracts and Concentrates

Sample Metrc ID: 1A4010300014ADD000003523

Lot # NA

Date Sampled: 06/07/18 00:00

Batch RFID: 1A4010300014ADD000003526

Date Accepted: 06/07/18

Batch Size: 2724 (g)

Results Valid Until: 06/07/19



Potency Analysis

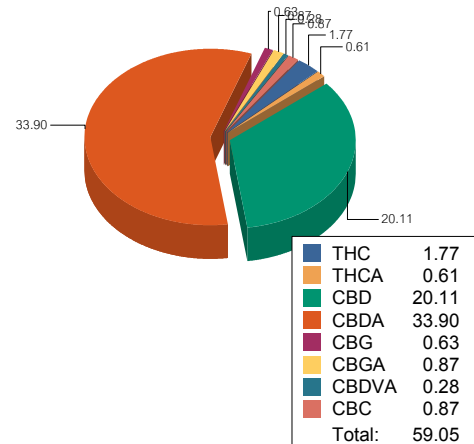
Date Extracted: 06/08/18

Analysis Method/SOP: Potency

Date Analyzed: 06/11/18

* - ORELAP certified analyte

Cannabinoids	% weight	mg/g	Cannabinoids Profile
Total THC ((THCA*0.877)+d9)	2.30	23	
Total CBD ((CBDA*0.877)+CBD)	49.85	498.5	
d9-THC (d9-Tetrahydrocannabinol)*	1.77	17.7	
d8-THC (d8-Tetrahydrocannabinol)*	< LOQ	< LOQ	
THCA (d9-Tetrahydrocannabinolic Acid)*	0.61	6.1	
CBD (Cannabidiol)*	20.11	201.1	
CBDA (Cannabidiolic Acid)*	33.90	339	
CBN (Cannabinol)*	< LOQ	< LOQ	
CBG (Cannabigerol)*	0.63	6.3	
CBGA (Cannabigerolic Acid)	0.87	8.7	
CBDV (Cannabidivarin)*	< LOQ	< LOQ	
CBDVA (Cannabidivarinic Acid)	0.28	2.8	
CBC (Cannabichromene)*	0.87	8.7	
THCV (Tetrahydrocannabivarin)	< LOQ	< LOQ	
Total Cannabinoids	59.05	590.5	



<LOQ - Results below the Limit of Quantitation - Compound not detected

Angelica Serr For Brian Weigel
Lab Director

These results relate only to the sample included on this report. The report may not be reproduced except in full, without the written permission of SC Laboratories. Samples tested in accordance with Oregon Administrative Rules, TNI 2009 Standard and SC Laboratories quality assurance plan unless otherwise noted.

Sample Name: **Chemdawg Sweet and Sour Duplicate**
 Tested for: **OM Extracts**
Compliance Concentrate

Laboratory ID: 18F0016-04

Matrix: Extracts and Concentrates

Sample Metrc ID: 1A4010300014ADD000003523

Lot # NA

Date Sampled: 06/07/18 00:00

Batch RFID: 1A4010300014ADD000003526

Date Accepted: 06/07/18

Batch Size: 2724 (g)

Results Valid Until: 06/07/19



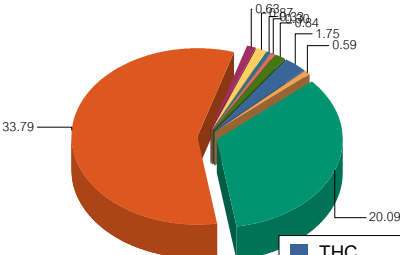
Potency Analysis

Date Extracted: 06/08/18

Analysis Method/SOP: Potency

Date Analyzed: 06/11/18

* - ORELAP certified analyte

Cannabinoids	% weight	mg/g	Cannabinoids Profile																				
Total THC ((THCA*0.877)+d9)	2.27	22.7	 <table border="1"> <tr><td>THC</td><td>1.75</td></tr> <tr><td>THCA</td><td>0.59</td></tr> <tr><td>CBD</td><td>20.09</td></tr> <tr><td>CBDA</td><td>33.79</td></tr> <tr><td>CBG</td><td>0.63</td></tr> <tr><td>CBGA</td><td>0.87</td></tr> <tr><td>CBDV</td><td>0.33</td></tr> <tr><td>CBDVA</td><td>0.30</td></tr> <tr><td>CBC</td><td>0.84</td></tr> <tr><td>Total:</td><td>59.19</td></tr> </table>	THC	1.75	THCA	0.59	CBD	20.09	CBDA	33.79	CBG	0.63	CBGA	0.87	CBDV	0.33	CBDVA	0.30	CBC	0.84	Total:	59.19
THC	1.75																						
THCA	0.59																						
CBD	20.09																						
CBDA	33.79																						
CBG	0.63																						
CBGA	0.87																						
CBDV	0.33																						
CBDVA	0.30																						
CBC	0.84																						
Total:	59.19																						
Total CBD ((CBDA*0.877)+CBD)	49.72	497.2																					
d9-THC (d9-Tetrahydrocannabinol)*	1.75	17.5																					
d8-THC (d8-Tetrahydrocannabinol)*	< LOQ	< LOQ																					
THCA (d9-Tetrahydrocannabinolic Acid)*	0.59	5.9																					
CBD (Cannabidiol)*	20.09	200.9																					
CBDA (Cannabidiolic Acid)*	33.79	337.9																					
CBN (Cannabinol)*	< LOQ	< LOQ																					
CBG (Cannabigerol)*	0.63	6.3																					
CBGA (Cannabigerolic Acid)	0.87	8.7																					
CBDV (Cannabidivarin)*	0.33	3.3																					
CBDVA (Cannabidivarinic Acid)	0.30	3																					
CBC (Cannabichromene)*	0.84	8.4																					
THCV (Tetrahydrocannabivarin)	< LOQ	< LOQ																					
Total Cannabinoids	59.19	591.9																					

<LOQ - Results below the Limit of Quantitation - Compound not detected

Sample Name: **Chemdawg Sweet and Sour**

Sample Metrc ID: 1A4010300014ADD000003523

	Primary Result	Duplicate Result	Average	% RPD	Pass/Fail (<20%RPD)
	%	%	%		
Total THC ((THCA*0.877)+d9)	2.30	2.27	2.29	1.31	PASS



Angelica Serr For Brian Weigel
 Lab Director

These results relate only to the sample included on this report. The report may not be reproduced except in full, without the written permission of SC Laboratories. Samples tested in accordance with Oregon Administrative Rules, TNI 2009 Standard and SC Laboratories quality assurance plan unless otherwise noted.

Sample Name: Chemdawg Sweet and Sour Primary	Date Sampled: 06/07/18 00:00
Tested for: OM Extracts	Date Accepted: 06/07/18
Compliance Concentrate	Results Valid Until: 06/07/19
Laboratory ID: 18F0016-03	Sample Metrc ID: 1A4010300014ADD000003523
Matrix: Extracts and Concentrates	Batch RFID: 1A4010300014ADD000003526
Lot # NA	Batch Size: 2724 (g)

Terpene Analysis

Date Extracted: 06/08/18

Analysis Method/SOP: Terpenes

Date Analyzed: 06/11/18

Analyte	Result (%)	LOQ	Analyte	Result	LOQ
alpha Pinene	0.416	0.096	Myrcene	2.063	0.096
alpha Phellandrene	< LOQ	0.096	3-Carene	< LOQ	0.096
alpha Terpinene	< LOQ	0.096	Limonene	0.394	0.096
Terpinolene	0.166	0.096	Linalool	0.112	0.096
Fenchol	< LOQ	0.096	Borneol	< LOQ	0.096
Terpineol	< LOQ	0.096	Geraniol	< LOQ	0.096
alpha Humulene	0.477	0.096	beta Caryophyllene	1.623	0.096
Caryophyllene Oxide	< LOQ	0.096	alpha Bisabolol	0.833	0.096
Camphene	< LOQ	0.096	beta Pinene	< LOQ	0.096
Ocimene	0.111	0.096	Sabinene	< LOQ	0.096
Camphor	< LOQ	0.096	Isoborneol	< LOQ	0.096
Menthol	< LOQ	0.096	alpha Cedrene	< LOQ	0.096
Nerolidol	< LOQ	0.096	R-(+)-Pulegone	< LOQ	0.096
Eucalyptol	< LOQ	0.096	p-Cymene	< LOQ	0.096
(-)-Isopulegol	< LOQ	0.096	Geranyl Acetate	< LOQ	0.096
Guaiol	0.430	0.096	Valencene	0.172	0.096
Phytol	0.156	0.096	Citronellol	< LOQ	0.096
gamma-Terpinene	< LOQ	0.096			
Total Terpenes				6.953 %	

<LOQ - Results below the Limit of Quantitation - Compound not detected

Terpene Analysis is not ORELAP Accredited.

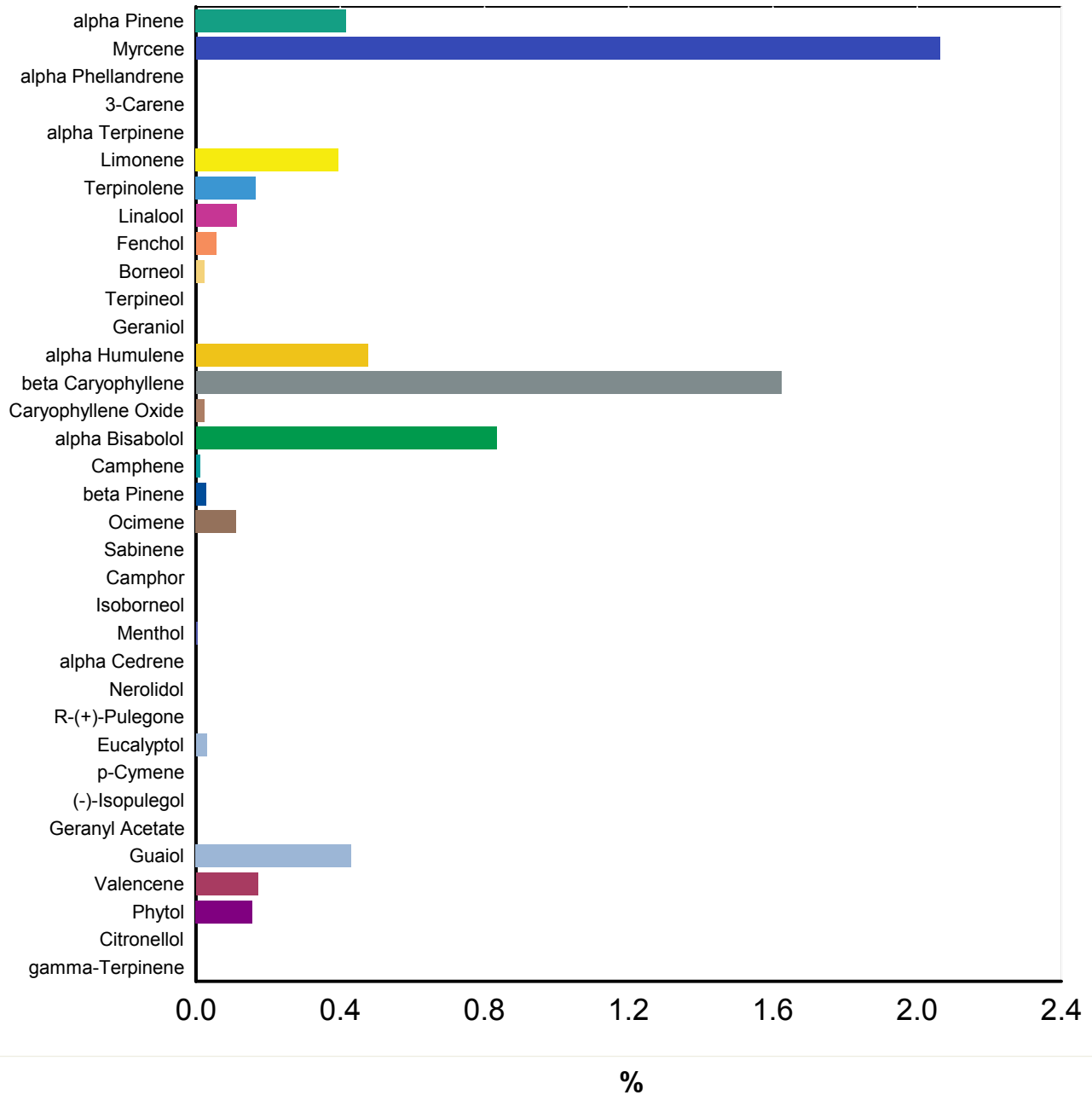


Angelica Serr For Brian Weigel
Lab Director

These results relate only to the sample included on this report. The report may not be reproduced except in full, without the written permission of SC Laboratories. Samples tested in accordance with Oregon Administrative Rules, TNI 2009 Standard and SC Laboratories quality assurance plan unless otherwise noted.

Sample Name: Chemdawg Sweet and	Date Sampled: 06/07/18 00:00
Tested for: OM Extracts	Date Accepted: 06/07/18 17:56
Compliance Concentrate	Results Valid Until: 06/07/19
Laboratory ID: 18F0016-03 Matrix: Extracts and	Client/Metric ID: 1A4010300014ADD000003523

Terpene Profile



Angie

Angelica Serr For Brian Weigel
 Lab Director

These results relate only to the sample included on this report. The report may not be reproduced except in full, without the written permission of SC Laboratories. Samples tested in accordance with Oregon Administrative Rules, TNI 2009 Standard and SC Laboratories quality assurance plan unless otherwise noted.

Sample Name: **Chemdawg Sweet and Sour Primary** Date Sampled: **06/07/18 00:00**
 Tested for: **OM Extracts** Date Accepted: **06/07/18**
Compliance Concentrate Results Valid Until: **06/07/19**

Laboratory ID: **18F0016-03** Sample Metrc ID: **1A4010300014ADD000003523**
 Matrix: **Extracts and Concentrates** Batch RFID: **1A4010300014ADD000003526**
 Lot # **NA** Batch Size: **2724 (g)**

Pesticide Analysis in ppm

Date Extracted: 06/08/18 Analysis Method/SOP: Pesticides
 Date Analyzed: 06/11/18 Results above the action levels are highlighted in red #.

Analyte	Result	Action Level	LOQ	Analyte	Result	Action Level	LOQ
Abamectin	< LOQ	0.5	0.230	Acephate	< LOQ	0.4	0.184
Acequinocyl	< LOQ	2	0.918	Acetamiprid	< LOQ	0.2	0.092
Aldicarb	< LOQ	0.4	0.184	Azoxystrobin	< LOQ	0.2	0.092
Bifenazate	< LOQ	0.2	0.092	Bifenthrin	< LOQ	0.2	0.092
Boscalid	< LOQ	0.4	0.184	Carbaryl	< LOQ	0.2	0.092
Carbofuran	< LOQ	0.2	0.092	Chlorantraniliprole	< LOQ	0.2	0.092
Chlorfenapyr	< LOQ	1	0.459	Chlorpyrifos	< LOQ	0.2	0.092
Clofentezine	< LOQ	0.2	0.092	Cyfluthrin	< LOQ	1	0.459
Cypermethrin	< LOQ	1	0.459	Daminozide	< LOQ	1	0.459
DDVP (Dichlorvos)	< LOQ	1	0.459	Diazinon	< LOQ	0.2	0.092
Dimethoate	< LOQ	0.2	0.092	Ethoprophos	< LOQ	0.2	0.092
Etofenprox	< LOQ	0.4	0.184	Etoxazole	< LOQ	0.2	0.092
Fenoxycarb	< LOQ	0.2	0.092	Fenpyroximate	< LOQ	0.4	0.184
Fipronil	< LOQ	0.4	0.184	Fonicamid	< LOQ	1	0.459
Fludioxonil	< LOQ	0.4	0.184	Hexythiazox	< LOQ	1	0.459
Imazalil	< LOQ	0.2	0.092	Imidacloprid	< LOQ	0.4	0.184
Kresoxim-methyl	< LOQ	0.4	0.184	Malathion	< LOQ	0.2	0.092
Metalaxyl	< LOQ	0.2	0.092	Methiocarb	< LOQ	0.2	0.092
Methomyl	< LOQ	0.4	0.184	Methyl parathion	< LOQ	0.2	0.092
MGK-264	< LOQ	0.2	0.092	Myclobutanil	< LOQ	0.2	0.092
Naled	< LOQ	0.5	0.230	Oxamyl	< LOQ	1	0.459
Paclobutrazol	< LOQ	0.4	0.184	Permethrins (total)	< LOQ	0.2	0.092
Phosmet	< LOQ	0.2	0.092	Piperonyl butoxide	< LOQ	2	0.459
Prallethrin	< LOQ	0.2	0.092	Propiconazole	< LOQ	0.4	0.184
Propoxur	< LOQ	0.2	0.092	Pyrethrins (total)	< LOQ	1	0.459
Pyridaben	< LOQ	0.2	0.092	Spinosad	< LOQ	0.2	0.092
Spiromesifen	< LOQ	0.2	0.092	Spirotetramat	< LOQ	0.2	0.092
Spiroxamine	< LOQ	0.4	0.184	Tebuconazole	< LOQ	0.4	0.184
Thiacloprid	< LOQ	0.2	0.092	Thiamethoxam	< LOQ	0.2	0.092
Trifloxystrobin	< LOQ	0.2	0.092				

<LOQ - Results below the Limit of Quantitation - Compound not detected



Angelica Serr For Brian Weigel
Lab Director

These results relate only to the sample included on this report. The report may not be reproduced except in full, without the written permission of SC Laboratories. Samples tested in accordance with Oregon Administrative Rules, TNI 2009 Standard and SC Laboratories quality assurance plan unless otherwise noted.

Sample Name: **Chemdawg Sweet and Sour Duplicate** Date Sampled: **06/07/18 00:00**
 Tested for: **OM Extracts** Date Accepted: **06/07/18**
Compliance Concentrate Results Valid Until: **06/07/19**

Laboratory ID: **18F0016-04** Sample Metrc ID: **1A4010300014ADD000003523**
 Matrix: **Extracts and Concentrates** Batch RFID: **1A4010300014ADD000003526**
 Lot # **NA** Batch Size: **2724 (g)**

Pesticide Analysis in ppm

Date Extracted: 06/08/18 Analysis Method/SOP: Pesticides
 Date Analyzed: 06/11/18 Results above the action levels are highlighted in red #.

Analyte	Result	Action Level	LOQ	Analyte	Result	Action Level	LOQ
Abamectin	< LOQ	0.5	0.235	Acephate	< LOQ	0.4	0.188
Acequinocyl	< LOQ	2	0.938	Acetamiprid	< LOQ	0.2	0.094
Aldicarb	< LOQ	0.4	0.188	Azoxystrobin	< LOQ	0.2	0.094
Bifenazate	< LOQ	0.2	0.094	Bifenthrin	< LOQ	0.2	0.094
Boscalid	< LOQ	0.4	0.188	Carbaryl	< LOQ	0.2	0.094
Carbofuran	< LOQ	0.2	0.094	Chlorantraniliprole	< LOQ	0.2	0.094
Chlorfenapyr	< LOQ	1	0.469	Chlorpyrifos	< LOQ	0.2	0.094
Clofentezine	< LOQ	0.2	0.094	Cyfluthrin	< LOQ	1	0.469
Cypermethrin	< LOQ	1	0.469	Daminozide	< LOQ	1	0.469
DDVP (Dichlorvos)	< LOQ	1	0.469	Diazinon	< LOQ	0.2	0.094
Dimethoate	< LOQ	0.2	0.094	Ethoprophos	< LOQ	0.2	0.094
Etofenprox	< LOQ	0.4	0.188	Etoxazole	< LOQ	0.2	0.094
Fenoxycarb	< LOQ	0.2	0.094	Fenpyroximate	< LOQ	0.4	0.188
Fipronil	< LOQ	0.4	0.188	Fonicamid	< LOQ	1	0.469
Fludioxonil	< LOQ	0.4	0.188	Hexythiazox	< LOQ	1	0.469
Imazalil	< LOQ	0.2	0.094	Imidacloprid	< LOQ	0.4	0.188
Kresoxim-methyl	< LOQ	0.4	0.188	Malathion	< LOQ	0.2	0.094
Metalaxyl	< LOQ	0.2	0.094	Methiocarb	< LOQ	0.2	0.094
Methomyl	< LOQ	0.4	0.188	Methyl parathion	< LOQ	0.2	0.094
MGK-264	< LOQ	0.2	0.094	Myclobutanil	< LOQ	0.2	0.094
Naled	< LOQ	0.5	0.235	Oxamyl	< LOQ	1	0.469
Paclobutrazol	< LOQ	0.4	0.188	Permethrins (total)	< LOQ	0.2	0.094
Phosmet	< LOQ	0.2	0.094	Piperonyl butoxide	< LOQ	2	0.469
Prallethrin	< LOQ	0.2	0.094	Propiconazole	< LOQ	0.4	0.188
Propoxur	< LOQ	0.2	0.094	Pyrethrins (total)	< LOQ	1	0.469
Pyridaben	< LOQ	0.2	0.094	Spinosad	< LOQ	0.2	0.094
Spiromesifen	< LOQ	0.2	0.094	Spirotetramat	< LOQ	0.2	0.094
Spiroxamine	< LOQ	0.4	0.188	Tebuconazole	< LOQ	0.4	0.188
Thiacloprid	< LOQ	0.2	0.094	Thiamethoxam	< LOQ	0.2	0.094
Trifloxystrobin	< LOQ	0.2	0.094				

<LOQ - Results below the Limit of Quantitation - Compound not detected



Angelica Serr For Brian Weigel
 Lab Director

These results relate only to the sample included on this report. The report may not be reproduced except in full, without the written permission of SC Laboratories. Samples tested in accordance with Oregon Administrative Rules, TNI 2009 Standard and SC Laboratories quality assurance plan unless otherwise noted.

Sample Name: Chemdawg Sweet and Sour Primary	Date Sampled: 06/07/18 00:00
Tested for: OM Extracts	Date Accepted: 06/07/18
Compliance Concentrate	Results Valid Until: 06/07/19
Laboratory ID: 18F0016-03	Sample Metric ID: 1A4010300014ADD000003523
Matrix: Extracts and Concentrates	Batch RFID: 1A4010300014ADD000003526
Lot # NA	Batch Size: 2724 (g)

Residual Solvents

Solvent	Results in ug/g	Action Level	LOQ	Date Extracted: 06/11/18
1,4-Dioxane	< LOQ	380	71.3	Date Analyzed: 06/11/18
2-Butanol	< LOQ	5000	438	Analysis Method/SOP: RST
2-Ethoxyethanol	< LOQ	160	30.0	
2-Propanol (IPA)	< LOQ	5000	438	
Acetone	< LOQ	5000	438	
Acetonitrile	< LOQ	400	76.9	
Benzene	< LOQ	2	0.750	
Butanes	< LOQ	5000	313	
Cyclohexane	< LOQ	3880	728	
Dichloromethane (methylene chloride)	< LOQ	600	113	
Ethyl acetate	< LOQ	5000	438	
Ethyl ether	< LOQ	5000	438	
Ethylbenzene	< LOQ	2170	406	
Ethylene glycol	< LOQ	620	116	
Ethylene oxide	< LOQ	50	37.5	
Heptane	< LOQ	5000	438	
Hexanes	< LOQ	290	54.4	
Isopropyl acetate	< LOQ	5000	438	
Isopropylbenzene (cumene)	< LOQ	70	13.1	
Methanol	< LOQ	3000	313	
Pentanes	< LOQ	5000	438	
Propane	< LOQ	5000	125	
Tetrahydrofuran	< LOQ	720	135	
Toluene	< LOQ	890	167	
Xylenes	< LOQ	2170	406	

<LOQ - Results below the Limit of Quantitation - Compound not detected
 Results above the Action Level fail state testing requirements and will be highlighted **Red #**.



Angelica Serr For Brian Weigel
 Lab Director

These results relate only to the sample included on this report. The report may not be reproduced except in full, without the written permission of SC Laboratories. Samples tested in accordance with Oregon Administrative Rules, TNI 2009 Standard and SC Laboratories quality assurance plan unless otherwise noted.

Sample Name: Chemdawg Sweet and Sour Duplicate	Date Sampled: 06/07/18 00:00
Tested for: OM Extracts	Date Accepted: 06/07/18
Compliance Concentrate	Results Valid Until: 06/07/19
Laboratory ID: 18F0016-04	Sample Metric ID: 1A4010300014ADD000003523
Matrix: Extracts and Concentrates	Batch RFID: 1A4010300014ADD000003526
Lot # NA	Batch Size: 2724 (g)

Residual Solvents

Solvent	Results in ug/g	Action Level	LOQ
1,4-Dioxane	< LOQ	380	71.3
2-Butanol	< LOQ	5000	438
2-Ethoxyethanol	< LOQ	160	30.0
2-Propanol (IPA)	< LOQ	5000	438
Acetone	< LOQ	5000	438
Acetonitrile	< LOQ	400	76.9
Benzene	< LOQ	2	0.750
Butanes	< LOQ	5000	313
Cyclohexane	< LOQ	3880	728
Dichloromethane (methylene chloride)	< LOQ	600	113
Ethyl acetate	< LOQ	5000	438
Ethyl ether	< LOQ	5000	438
Ethylbenzene	< LOQ	2170	406
Ethylene glycol	< LOQ	620	116
Ethylene oxide	< LOQ	50	37.5
Heptane	< LOQ	5000	438
Hexanes	< LOQ	290	54.4
Isopropyl acetate	< LOQ	5000	438
Isopropylbenzene (cumene)	< LOQ	70	13.1
Methanol	< LOQ	3000	313
Pentanes	< LOQ	5000	438
Propane	< LOQ	5000	125
Tetrahydrofuran	< LOQ	720	135
Toluene	< LOQ	890	167
Xylenes	< LOQ	2170	406

Date Extracted: 06/11/18
 Date Analyzed: 06/11/18
 Analysis Method/SOP: RST

<LOQ - Results below the Limit of Quantitation - Compound not detected
 Results above the Action Level fail state testing requirements and will be highlighted **Red #**.



Angelica Serr For Brian Weigel
 Lab Director

These results relate only to the sample included on this report. The report may not be reproduced except in full, without the written permission of SC Laboratories. Samples tested in accordance with Oregon Administrative Rules, TNI 2009 Standard and SC Laboratories quality assurance plan unless otherwise noted.

Case Narrative

RST - Acetonitrile above ½ reporting limit in blank.
Analyte below reporting limit in all client samples.

Potency- CBC exceeded normally accepted QC criteria in the sample duplicate. Due to relatively large variations in very small values calculated high RPD.

**Quality Control
Potency**

Batch: B180425 - Potency/Terpenes

Blank(B180425-BLK1)		Extracted - 06/08/18 13:40 Analyzed - 06/11/18 13:34						
Analyte	Result	Units	Spike Level	Source Result	%REC	%REC Limits	RPD	RPD Limit
d9-THC (d9-Tetrahydrocannabinol)	< LOQ	%						
d8-THC (d8-Tetrahydrocannabinol)	< LOQ	%						
THCA (d9-Tetrahydrocannabinolic Acid)	< LOQ	%						
CBD (Cannabidiol)	< LOQ	%						
CBDA (Cannabidiolic Acid)	< LOQ	%						
CBN (Cannabinol)	< LOQ	%						
CBG (Cannabigerol)	< LOQ	%						
CBGA (Cannabigerolic Acid)	< LOQ	%						
CBDV (Cannabidivarin)	< LOQ	%						
CBDVA (Cannabidivarinic Acid)	< LOQ	%						
CBC (Cannabichromene)	< LOQ	%						
THCV (Tetrahydrocannabivarin)	< LOQ	%						

Duplicate(B180425-DUP1)		Extracted - 06/08/18 13:40 Analyzed - 06/11/18 13:51						
Analyte	Result	Units	Spike Level	Source Result	%REC	%REC Limits	RPD	RPD Limit
d9-THC (d9-Tetrahydrocannabinol)	10.68	%		10.81			1.23	20
d8-THC (d8-Tetrahydrocannabinol)	< LOQ	%		< LOQ				20
THCA (d9-Tetrahydrocannabinolic Acid)	69.66	%		69.09			0.829	20
CBD (Cannabidiol)	< LOQ	%		< LOQ				20
CBDA (Cannabidiolic Acid)	0.12	%		0.12			3.13	20
CBN (Cannabinol)	< LOQ	%		< LOQ				20
CBG (Cannabigerol)	0.33	%		0.34			4.10	20
CBGA (Cannabigerolic Acid)	1.32	%		1.32			0.166	20
CBDV (Cannabidivarin)	< LOQ	%		< LOQ				20
CBDVA (Cannabidivarinic Acid)	0.06	%		< LOQ				20
CBC (Cannabichromene)	0.24	%		0.19			22.1	20
THCV (Tetrahydrocannabivarin)	< LOQ	%		< LOQ				20



Angelica Serr For Brian Weigel
Lab Director

These results relate only to the sample included on this report. The report may not be reproduced except in full, without the written permission of SC Laboratories. Samples tested in accordance with Oregon Administrative Rules, TNI 2009 Standard and SC Laboratories quality assurance plan unless otherwise noted.

**Quality Control
 Potency (Continued)**

Batch: B180425 - Potency/Terpenes (Continued)

LCS(B180425-BS1)		Extracted - 06/08/18 13:40 Analyzed - 06/11/18 13:43						
Analyte	Result	Units	Spike Level	Source Result	%REC	%REC Limits	RPD	RPD Limit
d9-THC (d9-Tetrahydrocannabinol)	0.18	%	0.200		88.7	80-120		
CBD (Cannabidiol)	0.19	%	0.200		97.2	80-120		
CBN (Cannabinol)	0.18	%	0.200		87.7	80-120		



Angelica Serr For Brian Weigel
 Lab Director

These results relate only to the sample included on this report. The report may not be reproduced except in full, without the written permission of SC Laboratories. Samples tested in accordance with Oregon Administrative Rules, TNI 2009 Standard and SC Laboratories quality assurance plan unless otherwise noted.

Quality Control Pesticide Analysis

Batch: B180428 - Pesticide Prep

Blank(B180428-BLK1)		Extracted - 06/08/18 13:57 Analyzed - 06/11/18 16:12						
Analyte	Result	Units	Spike Level	Source Result	%REC	%REC Limits	RPD	RPD Limit
Abamectin	< LOQ	ppm						
Acephate	< LOQ	ppm						
Acequinocyl	< LOQ	ppm						
Acetamiprid	< LOQ	ppm						
Aldicarb	< LOQ	ppm						
Azoxystrobin	< LOQ	ppm						
Bifenazate	< LOQ	ppm						
Bifenthrin	< LOQ	ppm						
Boscalid	< LOQ	ppm						
Carbaryl	< LOQ	ppm						
Carbofuran	< LOQ	ppm						
Chlorantraniliprole	< LOQ	ppm						
Chlorfenapyr	< LOQ	ppm						
Chlorpyrifos	< LOQ	ppm						
Clofentezine	< LOQ	ppm						
Cyfluthrin	< LOQ	ppm						
Cypermethrin	< LOQ	ppm						
Daminozide	< LOQ	ppm						
DDVP (Dichlorvos)	< LOQ	ppm						
Diazinon	< LOQ	ppm						
Dimethoate	< LOQ	ppm						
Ethoprophos	< LOQ	ppm						
Etofenprox	< LOQ	ppm						
Etoxazole	< LOQ	ppm						
Fenoxycarb	< LOQ	ppm						
Fenpyroximate	< LOQ	ppm						
Fipronil	< LOQ	ppm						
Fonicamid	< LOQ	ppm						
Fludioxonil	< LOQ	ppm						
Hexythiazox	< LOQ	ppm						
Imazalil	< LOQ	ppm						
Imidacloprid	< LOQ	ppm						
Kresoxim-methyl	< LOQ	ppm						
Malathion	< LOQ	ppm						
Metalaxyl	< LOQ	ppm						



Angelica Serr For Brian Weigel
Lab Director

These results relate only to the sample included on this report. The report may not be reproduced except in full, without the written permission of SC Laboratories. Samples tested in accordance with Oregon Administrative Rules, TNI 2009 Standard and SC Laboratories quality assurance plan unless otherwise noted.

Quality Control

Pesticide Analysis (Continued)

Batch: B180428 - Pesticide Prep (Continued)

Blank(B180428-BLK1)			Extracted - 06/08/18 13:57 Analyzed - 06/11/18 16:12					
Analyte	Result	Units	Spike Level	Source Result	%REC	%REC Limits	RPD	RPD Limit
Methiocarb	< LOQ	ppm						
Methomyl	< LOQ	ppm						
Methyl parathion	< LOQ	ppm						
MGK-264	< LOQ	ppm						
Myclobutanil	< LOQ	ppm						
Naled	< LOQ	ppm						
Oxamyl	< LOQ	ppm						
Paclbutrazol	< LOQ	ppm						
Permethrins (total)	< LOQ	ppm						
Phosmet	< LOQ	ppm						
Piperonyl butoxide	< LOQ	ppm						
Prallethrin	< LOQ	ppm						
Propiconazole	< LOQ	ppm						
Propoxur	< LOQ	ppm						
Pyrethrins (total)	< LOQ	ppm						
Pyridaben	< LOQ	ppm						
Spinosad	< LOQ	ppm						
Spiromesifen	< LOQ	ppm						
Spirotetramat	< LOQ	ppm						
Spiroxamine	< LOQ	ppm						
Tebuconazole	< LOQ	ppm						
Thiacloprid	< LOQ	ppm						
Thiamethoxam	< LOQ	ppm						
Trifloxystrobin	< LOQ	ppm						

LCS(B180428-BS1)			Extracted - 06/08/18 13:57 Analyzed - 06/11/18 16:29					
Analyte	Result	Units	Spike Level	Source Result	%REC	%REC Limits	RPD	RPD Limit
Acephate	0.88	ppm	1.00		88.5	70-130		
Acetamiprid	0.97	ppm	1.00		96.9	70-130		
Aldicarb	0.89	ppm	1.00		89.0	70-130		
Bifenazate	1.11	ppm	1.00		111	70-130		
Boscalid	0.96	ppm	1.00		95.7	70-130		
Chlorantraniliprole	1.20	ppm	1.00		120	70-130		
Chlorpyrifos	0.60	ppm	1.00		59.8	70-130		
Cyfluthrin	0.86	ppm	1.00		85.8	70-130		

Angie

Angelica Serr For Brian Weigel
Lab Director

These results relate only to the sample included on this report. The report may not be reproduced except in full, without the written permission of SC Laboratories. Samples tested in accordance with Oregon Administrative Rules, TNI 2009 Standard and SC Laboratories quality assurance plan unless otherwise noted.

Quality Control Pesticide Analysis (Continued)

Batch: B180428 - Pesticide Prep (Continued)

LCS(B180428-BS1)		Extracted - 06/08/18 13:57 Analyzed - 06/11/18 16:29						
Analyte	Result	Units	Spike Level	Source Result	%REC	%REC Limits	RPD	RPD Limit
DDVP (Dichlorvos)	0.93	ppm	1.00		93.4	70-130		
Ethoprophos	1.00	ppm	1.00		100	70-130		
Etoxazole	0.75	ppm	1.00		75.2	70-130		
Fenoxycarb	1.07	ppm	1.00		107	70-130		
Flonicamid	1.05	ppm	1.00		105	70-130		
Imazalil	0.77	ppm	1.00		77.4	70-130		
Imidacloprid	1.02	ppm	1.00		102	70-130		
Methiocarb	0.91	ppm	1.00		91.5	70-130		
Myclobutanil	1.04	ppm	1.00		104	70-130		
Oxamyl	0.88	ppm	1.00		88.2	70-130		
Paclobutrazol	1.09	ppm	1.00		109	70-130		
Piperonyl butoxide	0.74	ppm	1.00		73.7	70-130		
Prallethrin	0.71	ppm	1.00		70.9	70-130		
Propoxur	0.98	ppm	1.00		98.4	70-130		
Spiromesifen	0.74	ppm	1.00		73.8	70-130		
Spiroxamine	0.25	ppm	1.00		25.0	70-130		
Thiacloprid	0.95	ppm	1.00		95.2	70-130		
Thiamethoxam	0.93	ppm	1.00		93.1	70-130		
Trifloxystrobin	0.95	ppm	1.00		95.0	70-130		

Matrix Spike(B180428-MS1)		Extracted - 06/08/18 13:57 Analyzed - 06/11/18 16:45						
Analyte	Result	Units	Spike Level	Source Result	%REC	%REC Limits	RPD	RPD Limit
Acephate	1.58	ppm	1.85	< LOQ	85.4	70-130		
Acetamiprid	1.88	ppm	1.85	< LOQ	102	70-130		
Aldicarb	1.69	ppm	1.85	< LOQ	91.6	70-130		
Bifenazate	2.22	ppm	1.85	< LOQ	120	70-130		
Boscalid	2.20	ppm	1.85	< LOQ	119	70-130		
Chlorantraniliprole	2.30	ppm	1.85	< LOQ	125	70-130		
Chlorpyrifos	0.49	ppm	1.85	< LOQ	26.4	70-130		
Cyfluthrin	1.16	ppm	1.85	< LOQ	62.7	70-130		
DDVP (Dichlorvos)	1.70	ppm	1.85	< LOQ	92.0	70-130		
Ethoprophos	1.81	ppm	1.85	< LOQ	98.0	70-130		
Etoxazole	1.47	ppm	1.85	< LOQ	79.7	70-130		
Fenoxycarb	2.09	ppm	1.85	< LOQ	114	70-130		
Flonicamid	1.78	ppm	1.85	< LOQ	96.5	70-130		



Angelica Serr For Brian Weigel
 Lab Director

These results relate only to the sample included on this report. The report may not be reproduced except in full, without the written permission of SC Laboratories. Samples tested in accordance with Oregon Administrative Rules, TNI 2009 Standard and SC Laboratories quality assurance plan unless otherwise noted.

Quality Control

Pesticide Analysis (Continued)

Batch: B180428 - Pesticide Prep (Continued)

Matrix Spike(B180428-MS1)			Extracted - 06/08/18 13:57 Analyzed - 06/11/18 16:45					
Analyte	Result	Units	Spike Level	Source Result	%REC	%REC Limits	RPD	RPD Limit
Imazalil	1.66	ppm	1.85	< LOQ	89.7	70-130		
Imidacloprid	2.16	ppm	1.85	< LOQ	117	70-130		
Metalaxyl	1.71	ppm	1.85	< LOQ	92.5	70-130		
Myclobutanil	1.97	ppm	1.85	< LOQ	107	70-130		
Oxamyl	1.58	ppm	1.85	< LOQ	85.4	70-130		
Paclobutrazol	1.89	ppm	1.85	< LOQ	102	70-130		
Piperonyl butoxide	0.50	ppm	1.85	< LOQ	27.2	70-130		
Prallethrin	1.14	ppm	1.85	< LOQ	61.9	70-130		
Propoxur	1.74	ppm	1.85	< LOQ	94.2	70-130		
Spiromesifen	1.08	ppm	1.85	< LOQ	58.8	70-130		
Spiroxamine	1.11	ppm	1.85	< LOQ	60.2	70-130		
Thiacloprid	1.77	ppm	1.85	< LOQ	95.7	70-130		
Thiamethoxam	1.67	ppm	1.85	< LOQ	90.4	70-130		
Trifloxystrobin	1.88	ppm	1.85	< LOQ	102	70-130		

Matrix Spike Dup(B180428-MSD1)			Extracted - 06/08/18 13:57 Analyzed - 06/11/18					
Analyte	Result	Units	Spike Level	Source Result	%REC	%REC Limits	RPD	RPD Limit
Acephate	1.62	ppm	1.84	< LOQ	88.1	70-130	3.10	30
Acetamiprid	2.08	ppm	1.84	< LOQ	113	70-130	10.5	30
Aldicarb	1.79	ppm	1.84	< LOQ	97.2	70-130	5.97	30
Bifenazate	2.34	ppm	1.84	< LOQ	127	70-130	5.59	30
Boscalid	2.08	ppm	1.84	< LOQ	113	70-130	5.35	30
Chlorantraniliprole	2.15	ppm	1.84	< LOQ	117	70-130	6.54	30
Chlorpyrifos	0.54	ppm	1.84	< LOQ	29.3	70-130	10.4	30
Cyfluthrin	1.22	ppm	1.84	< LOQ	66.4	70-130	5.74	30
DDVP (Dichlorvos)	1.86	ppm	1.84	< LOQ	101	70-130	9.07	30
Ethoprophos	1.91	ppm	1.84	< LOQ	104	70-130	5.59	30
Etoxazole	1.63	ppm	1.84	< LOQ	88.4	70-130	10.3	30
Fenoxycarb	2.05	ppm	1.84	< LOQ	111	70-130	1.79	30
Flonicamid	1.81	ppm	1.84	< LOQ	98.2	70-130	1.74	30
Imazalil	1.75	ppm	1.84	< LOQ	95.1	70-130	5.84	30
Imidacloprid	2.48	ppm	1.84	< LOQ	135	70-130	14.0	30
Methiocarb	1.49	ppm	1.84	< LOQ	80.9	70-130	5.82	30
Myclobutanil	2.10	ppm	1.84	< LOQ	114	70-130	6.25	30
Oxamyl	1.63	ppm	1.84	< LOQ	88.4	70-130	3.40	30



Angelica Serr For Brian Weigel
 Lab Director

These results relate only to the sample included on this report. The report may not be reproduced except in full, without the written permission of SC Laboratories. Samples tested in accordance with Oregon Administrative Rules, TNI 2009 Standard and SC Laboratories quality assurance plan unless otherwise noted.

Quality Control Pesticide Analysis (Continued)

Batch: B180428 - Pesticide Prep (Continued)

Matrix Spike Dup(B180428-MSD1)			Extracted - 06/08/18 13:57 Analyzed - 06/11/18					
Analyte	Result	Units	Spike Level	Source Result	%REC	%REC Limits	RPD	RPD Limit
Paclbutrazol	1.85	ppm	1.84	< LOQ	101	70-130	1.79	30
Piperonyl butoxide	0.55	ppm	1.84	< LOQ	29.6	70-130	8.48	30
Prallethrin	1.27	ppm	1.84	< LOQ	69.1	70-130	11.0	30
Propoxur	1.75	ppm	1.84	< LOQ	94.8	70-130	0.706	30
Spiromesifen	1.17	ppm	1.84	< LOQ	63.2	70-130	7.31	30
Spiroxamine	1.10	ppm	1.84	< LOQ	59.5	70-130	1.15	30
Thiacloprid	2.03	ppm	1.84	< LOQ	110	70-130	13.9	30
Thiamethoxam	1.73	ppm	1.84	< LOQ	94.0	70-130	3.93	30
Trifloxystrobin	1.92	ppm	1.84	< LOQ	104	70-130	2.43	30



Angelica Serr For Brian Weigel
Lab Director

These results relate only to the sample included on this report. The report may not be reproduced except in full, without the written permission of SC Laboratories. Samples tested in accordance with Oregon Administrative Rules, TNI 2009 Standard and SC Laboratories quality assurance plan unless otherwise noted.

Quality Control Solvent Analysis

Batch: B180430 - Residual Solvent Prep

Blank(B180430-BLK1)		Extracted - 06/11/18 13:00 Analyzed - 06/11/18 16:24						
Analyte	Result	Units	Spike Level	Source Result	%REC	%REC Limits	RPD	RPD Limit
1,4-Dioxane	< LOQ	ug/g						
2-Butanol	< LOQ	ug/g						
2-Ethoxyethanol	< LOQ	ug/g						
2-Propanol (IPA)	< LOQ	ug/g						
Acetone	< LOQ	ug/g						
Acetonitrile	< LOQ	ug/g						
Benzene	< LOQ	ug/g						
Butanes	< LOQ	ug/g						
Cyclohexane	< LOQ	ug/g						
Dichloromethane (methylene chloride)	< LOQ	ug/g						
Ethyl acetate	< LOQ	ug/g						
Ethyl ether	< LOQ	ug/g						
Ethylbenzene	< LOQ	ug/g						
Ethylene glycol	< LOQ	ug/g						
Ethylene oxide	< LOQ	ug/g						
Heptane	< LOQ	ug/g						
Hexanes	< LOQ	ug/g						
Isopropyl acetate	< LOQ	ug/g						
Isopropylbenzene (cumene)	< LOQ	ug/g						
Methanol	< LOQ	ug/g						
Pentanes	< LOQ	ug/g						
Propane	< LOQ	ug/g						
Tetrahydrofuran	< LOQ	ug/g						
Toluene	< LOQ	ug/g						
Xylenes	< LOQ	ug/g						

LCS(B180430-BS1)		Extracted - 06/11/18 13:00 Analyzed - 06/11/18 15:20						
Analyte	Result	Units	Spike Level	Source Result	%REC	%REC Limits	RPD	RPD Limit
1,4-Dioxane	521	ug/g	570		91.4	70-130		
2,2-Dimethylbutane	455	ug/g	435		105	70-130		
2-Butanol	3590	ug/g	3500		102	70-130		
2-Ethoxyethanol	228	ug/g	240		94.9	70-130		
2-Methylbutane (isopentane)	3970	ug/g	3500		113	70-130		
2-Methylpentane/2,3-Dimethylbutane	899	ug/g	870		103	70-130		
2-Propanol (IPA)	3790	ug/g	3500		108	70-130		



Angelica Serr For Brian Weigel
Lab Director

These results relate only to the sample included on this report. The report may not be reproduced except in full, without the written permission of SC Laboratories. Samples tested in accordance with Oregon Administrative Rules, TNI 2009 Standard and SC Laboratories quality assurance plan unless otherwise noted.

Quality Control

Solvent Analysis (Continued)

Batch: B180430 - Residual Solvent Prep (Continued)

LCS(B180430-BS1)		Extracted - 06/11/18 13:00 Analyzed - 06/11/18 15:20						
Analyte	Result	Units	Spike Level	Source Result	%REC	%REC Limits	RPD	RPD Limit
3-Methylpentane	433	ug/g	435		99.5	70-130		
Acetone	3810	ug/g	3500		109	70-130		
Acetonitrile	642	ug/g	615		104	70-130		
Benzene	2.84	ug/g	3.00		94.7	70-130		
Cyclohexane	6130	ug/g	5820		105	70-130		
Dichloromethane (methylene chloride)	954	ug/g	900		106	70-130		
Ethyl acetate	3620	ug/g	3500		103	70-130		
Ethyl ether	3910	ug/g	3500		112	70-130		
Ethylbenzene	2990	ug/g	3250		92.1	70-130		
Ethylene glycol	919	ug/g	930		98.8	70-130		
Heptane	3550	ug/g	3500		101	70-130		
Isopropyl acetate	3550	ug/g	3500		102	70-130		
Isopropylbenzene (cumene)	91.5	ug/g	105		87.2	70-130		
m,p-Xylene	6090	ug/g	6510		93.6	70-130		
Methanol	2790	ug/g	2500		112	70-130		
n-Hexane	431	ug/g	435		99.1	70-130		
n-Pentane	3960	ug/g	3500		113	70-130		
Tetrahydrofuran	1050	ug/g	1080		97.5	70-130		
Toluene	1240	ug/g	1340		92.4	70-130		
o-Xylene	2940	ug/g	3250		90.4	70-130		

Matrix Spike(B180430-MS1)		Extracted - 06/11/18 13:00 Analyzed - 06/11/18 15:41						
Analyte	Result	Units	Spike Level	Source Result	%REC	%REC Limits	RPD	RPD Limit
1,4-Dioxane	510	ug/g	579	< LOQ	88.1	70-130		
2,2-Dimethylbutane	434	ug/g	442	< LOQ	98.3	70-130		
2-Butanol	3490	ug/g	3550	< LOQ	98.1	70-130		
2-Ethoxyethanol	229	ug/g	244	< LOQ	93.9	70-130		
2-Methylbutane (isopentane)	3770	ug/g	3550	< LOQ	106	70-130		
2-Methylpentane/2,3-Dimethylbutane	869	ug/g	883	< LOQ	98.3	70-130		
2-Propanol (IPA)	3620	ug/g	3550	< LOQ	102	70-130		
3-Methylpentane	424	ug/g	442	< LOQ	96.0	70-130		
Acetone	3610	ug/g	3550	135	97.9	70-130		
Acetonitrile	613	ug/g	624	35.6	92.5	70-130		
Benzene	3.31	ug/g	3.05	< LOQ	109	70-130		
Cyclohexane	6220	ug/g	5910	< LOQ	105	70-130		



 Angelica Serr For Brian Weigel
 Lab Director

These results relate only to the sample included on this report. The report may not be reproduced except in full, without the written permission of SC Laboratories. Samples tested in accordance with Oregon Administrative Rules, TNI 2009 Standard and SC Laboratories quality assurance plan unless otherwise noted.

Quality Control

Solvent Analysis (Continued)

Batch: B180430 - Residual Solvent Prep (Continued)

Matrix Spike(B180430-MS1)			Extracted - 06/11/18 13:00 Analyzed - 06/11/18 15:41					
Analyte	Result	Units	Spike Level	Source Result	%REC	%REC Limits	RPD	RPD Limit
Dichloromethane (methylene chloride)	938	ug/g	914	< LOQ	103	70-130		
Ethyl acetate	3460	ug/g	3550	< LOQ	97.3	70-130		
Ethyl ether	3710	ug/g	3550	< LOQ	104	70-130		
Ethylbenzene	3180	ug/g	3300	< LOQ	96.4	70-130		
Ethylene glycol	958	ug/g	944	< LOQ	101	70-130		
Heptane	3580	ug/g	3550	< LOQ	101	70-130		
Isopropyl acetate	3430	ug/g	3550	< LOQ	96.6	70-130		
Isopropylbenzene (cumene)	102	ug/g	107	< LOQ	95.6	70-130		
m,p-Xylene	6560	ug/g	6610	< LOQ	99.2	70-130		
Methanol	2650	ug/g	2540	64.6	102	70-130		
n-Hexane	426	ug/g	442	< LOQ	96.4	70-130		
n-Pentane	3800	ug/g	3550	< LOQ	107	70-130		
Tetrahydrofuran	1010	ug/g	1100	< LOQ	91.9	70-130		
Toluene	1270	ug/g	1360	< LOQ	93.6	70-130		
o-Xylene	3160	ug/g	3300	< LOQ	95.7	70-130		

Matrix Spike Dup(B180430-MSD1)			Extracted - 06/11/18 13:00 Analyzed - 06/11/18					
Analyte	Result	Units	Spike Level	Source Result	%REC	%REC Limits	RPD	RPD Limit
1,4-Dioxane	532	ug/g	598	< LOQ	88.9	70-130	4.21	30
2,2-Dimethylbutane	451	ug/g	457	< LOQ	98.6	70-130	3.73	30
2-Butanol	3590	ug/g	3670	< LOQ	97.6	70-130	2.82	30
2-Ethoxyethanol	238	ug/g	252	< LOQ	94.6	70-130	4.08	30
2-Methylbutane (isopentane)	3880	ug/g	3670	< LOQ	106	70-130	2.77	30
2-Methylpentane/2,3-Dimethylbutane	898	ug/g	913	< LOQ	98.3	70-130	3.36	30
2-Propanol (IPA)	3740	ug/g	3670	< LOQ	102	70-130	3.12	30
3-Methylpentane	440	ug/g	457	< LOQ	96.4	70-130	3.77	30
Acetone	3730	ug/g	3670	135	97.8	70-130	3.13	30
Acetonitrile	641	ug/g	646	35.6	93.7	70-130	4.34	30
Benzene	3.13	ug/g	3.15	< LOQ	99.5	70-130	5.60	30
Cyclohexane	6390	ug/g	6120	< LOQ	104	70-130	2.62	30
Dichloromethane (methylene chloride)	976	ug/g	945	< LOQ	103	70-130	3.96	30
Ethyl acetate	3590	ug/g	3670	< LOQ	97.8	70-130	3.86	30
Ethyl ether	3850	ug/g	3670	< LOQ	105	70-130	3.68	30
Ethylbenzene	3290	ug/g	3410	< LOQ	96.5	70-130	3.43	30
Ethylene glycol	999	ug/g	976	< LOQ	102	70-130	4.22	30



 Angelica Serr For Brian Weigel
 Lab Director

These results relate only to the sample included on this report. The report may not be reproduced except in full, without the written permission of SC Laboratories. Samples tested in accordance with Oregon Administrative Rules, TNI 2009 Standard and SC Laboratories quality assurance plan unless otherwise noted.

Quality Control Solvent Analysis (Continued)

Batch: B180430 - Residual Solvent Prep (Continued)

Matrix Spike Dup(B180430-MSD1)			Extracted - 06/11/18 13:00 Analyzed - 06/11/18					
Analyte	Result	Units	Spike Level	Source Result	%REC	%REC Limits	RPD	RPD Limit
Heptane	3720	ug/g	3670	< LOQ	101	70-130	3.72	30
Isopropyl acetate	3540	ug/g	3670	< LOQ	96.5	70-130	3.26	30
Isopropylbenzene (cumene)	102	ug/g	110	< LOQ	92.7	70-130	0.280	30
m,p-Xylene	6730	ug/g	6840	< LOQ	98.4	70-130	2.51	30
Methanol	2740	ug/g	2620	64.6	102	70-130	3.28	30
n-Hexane	444	ug/g	457	< LOQ	97.2	70-130	4.18	30
n-Pentane	3910	ug/g	3670	< LOQ	106	70-130	2.84	30
Tetrahydrofuran	1050	ug/g	1130	< LOQ	92.5	70-130	4.08	30
Toluene	1330	ug/g	1400	< LOQ	95.1	70-130	4.89	30
o-Xylene	3250	ug/g	3410	< LOQ	95.4	70-130	2.98	30



Angelica Serr For Brian Weigel
Lab Director

These results relate only to the sample included on this report. The report may not be reproduced except in full, without the written permission of SC Laboratories. Samples tested in accordance with Oregon Administrative Rules, TNI 2009 Standard and SC Laboratories quality assurance plan unless otherwise noted.

Quality Control Terpene Analysis

Batch: B180426 - Potency/Terpenes

Blank(B180426-BLK1)			Extracted - 06/08/18 13:43 Analyzed - 06/11/18 14:56					
Analyte	Result	Units	Spike Level	Source Result	%REC	%REC Limits	RPD	RPD Limit
alpha Pinene	< LOQ	%						
Myrcene	< LOQ	%						
alpha Phellandrene	< LOQ	%						
3-Carene	< LOQ	%						
alpha Terpinene	< LOQ	%						
Limonene	< LOQ	%						
Terpinolene	< LOQ	%						
Linalool	< LOQ	%						
Fenchol	< LOQ	%						
Borneol	< LOQ	%						
Terpineol	< LOQ	%						
Geraniol	< LOQ	%						
alpha Humulene	< LOQ	%						
beta Caryophyllene	< LOQ	%						
Caryophyllene Oxide	< LOQ	%						
alpha Bisabolol	< LOQ	%						
Camphene	< LOQ	%						
beta Pinene	< LOQ	%						
Ocimene	< LOQ	%						
Sabinene	< LOQ	%						
Camphor	< LOQ	%						
Isoborneol	< LOQ	%						
Menthol	< LOQ	%						
alpha Cedrene	< LOQ	%						
Nerolidol	< LOQ	%						
R-(+)-Pulegone	< LOQ	%						
Eucalyptol	< LOQ	%						
p-Cymene	< LOQ	%						
(-)-Isopulegol	< LOQ	%						
Geranyl Acetate	< LOQ	%						
Guaiol	< LOQ	%						
Valencene	< LOQ	%						
Phytol	< LOQ	%						
Citronellol	< LOQ	%						
gamma-Terpinene	< LOQ	%						



Angelica Serr For Brian Weigel
Lab Director

These results relate only to the sample included on this report. The report may not be reproduced except in full, without the written permission of SC Laboratories. Samples tested in accordance with Oregon Administrative Rules, TNI 2009 Standard and SC Laboratories quality assurance plan unless otherwise noted.

Quality Control

Terpene Analysis (Continued)

Batch: B180426 - Potency/Terpenes (Continued)

Duplicate(B180426-DUP1)		Extracted - 06/08/18 13:43 Analyzed - 06/11/18 14:56						
Analyte	Result	Units	Spike Level	Source Result	%REC	%REC Limits	RPD	RPD Limit
alpha Pinene	0.171	%		0.171			0.173	20
Myrcene	0.385	%		0.385			0.113	20
alpha Phellandrene	< LOQ	%		< LOQ				20
3-Carene	< LOQ	%		< LOQ				20
alpha Terpinene	< LOQ	%		< LOQ				20
Limonene	1.231	%		1.215			1.31	20
Terpinolene	< LOQ	%		< LOQ				20
Linalool	0.201	%		0.192			4.75	20
Fenchol	0.237	%		0.240			1.12	20
Borneol	< LOQ	%		< LOQ				20
Terpineol	0.211	%		0.214			1.27	20
Geraniol	< LOQ	%		< LOQ				20
alpha Humulene	0.235	%		0.232			1.44	20
beta Caryophyllene	0.731	%		0.726			0.726	20
Caryophyllene Oxide	< LOQ	%		< LOQ				20
alpha Bisabolol	< LOQ	%		< LOQ				20
Camphene	< LOQ	%		< LOQ				20
beta Pinene	0.232	%		0.239			2.84	20
Ocimene	0.175	%		0.176			0.265	20
Sabinene	< LOQ	%		< LOQ				20
Camphor	< LOQ	%		< LOQ				20
Isoborneol	< LOQ	%		< LOQ				20
Menthol	< LOQ	%		< LOQ				20
alpha Cedrene	< LOQ	%		< LOQ				20
Nerolidol	< LOQ	%		< LOQ				20
R-(+)-Pulegone	< LOQ	%		< LOQ				20
Eucalyptol	< LOQ	%		< LOQ				20
p-Cymene	< LOQ	%		< LOQ				20
(-)-Isopulegol	< LOQ	%		< LOQ				20
Geranyl Acetate	< LOQ	%		< LOQ				20
Guaiol	0.241	%		0.242			0.486	20
Valencene	0.140	%		0.133			4.59	20
Phytol	< LOQ	%		< LOQ				20
Citronellol	< LOQ	%		< LOQ				20
gamma-Terpinene	< LOQ	%		< LOQ				20

Angie

Angelica Serr For Brian Weigel
 Lab Director

These results relate only to the sample included on this report. The report may not be reproduced except in full, without the written permission of SC Laboratories. Samples tested in accordance with Oregon Administrative Rules, TNI 2009 Standard and SC Laboratories quality assurance plan unless otherwise noted.

Observations and Abnormalities:							
---------------------------------	--	--	--	--	--	--	--

Container Type	METRC Harvest/Processing Lot ID #:				Product Type	Client Sample Name	Product Date	Batch Size (g)
Jar					Product	Sour-Tsu FECO		2724
METRC Batch ID	Product Temp (°C)	Humidity (%)	# of Containers	Sample Media	# Zones	# of Inc.	1° Sample (g)	Sample Name
3525		39.6	1	Vial	4	13	1	Sour-Tsu FECO Primary
Lab Sample ID	Container ID	Increment Zone	Sampling Media Wt. (g)	Wt. Inc+Media (g)	Increment Weight (g)	Sample METRC ID#		
18FOM07-03	Sour-Tsu FECO-1	A1			0.65			
18FOM07-03	Sour-Tsu FECO-1	A2	0		0.65			
18FOM07-03	Sour-Tsu FECO-1	A2	0		0.65			
18FOM07-03	Sour-Tsu FECO-1	A2	0		0.65			
18FOM07-03	Sour-Tsu FECO-1	A3	0		0.65			
18FOM07-03	Sour-Tsu FECO-1	A3	0		0.65			
18FOM07-03	Sour-Tsu FECO-1	A3	0		0.65			
18FOM07-03	Sour-Tsu FECO-1	A3	0		0.65			
18FOM07-03	Sour-Tsu FECO-1	A3	0		0.65			
18FOM07-03	Sour-Tsu FECO-1	A4	0		0.65			
18FOM07-03	Sour-Tsu FECO-1	A4	0		0.65			
18FOM07-03	Sour-Tsu FECO-1	A4	0		0.65			
18FOM07-03	Sour-Tsu FECO-1	A4	0		0.65			
						Total Primary Mass = 8.45	Primary + Duplicate Mass = 0 g	

Observations and Abnormalities:	Batch #	Marks/Labels	Cont. Types/Sizes	Uniform	Plant Colors	Shape and Size	Sampling Plan

METRC Batch ID	Product Temp (°C)	Humidity (%)	# of Containers	Sample Media	# Zones	# of Inc.	1° Sample (g)	Sample Name
3525		39.6	1	Vial	4	13	1	Sour-Tsu FECO Duplicate
Lab Sample ID	Container ID	Increment Zone	Sampling Media Wt. (g)	Wt. Inc+Media (g)	Increment Weight (g)	Sample METRC ID#		
18FOM07-04	Sour-Tsu FECO-1	A1			0.65			
18FOM07-04	Sour-Tsu FECO-1	A1	0		0.65			
18FOM07-04	Sour-Tsu FECO-1	A1	0		0.65			
18FOM07-04	Sour-Tsu FECO-1	A2	0		0.65			
18FOM07-04	Sour-Tsu FECO-1	A2	0		0.65			
18FOM07-04	Sour-Tsu FECO-1	A2	0		0.65			
18FOM07-04	Sour-Tsu FECO-1	A3	0		0.7			
18FOM07-04	Sour-Tsu FECO-1	A3	0		0.65			
18FOM07-04	Sour-Tsu FECO-1	A3	0		0.66			
18FOM07-04	Sour-Tsu FECO-1	A4	0		0.65			
18FOM07-04	Sour-Tsu FECO-1	A4	0		0.68			
18FOM07-04	Sour-Tsu FECO-1	A4	0		0.66			
18FOM07-04	Sour-Tsu FECO-1	A4	0		0.68			

					Total Duplicate Mass = 8.58	Primary + Duplicate Mass = 0 g	
Observations and Abnormalities:	Batch #	Marks/Labels	Cont. Types/Sizes	Uniform	Plant Colors	Shape and Size	Sampling Plan



**OREGON LIQUOR CONTROL COMMISSION
CANNABIS TRANSPORTATION MANIFEST**



18F0016

All sales transactions are to be completed prior to transportation of any CANNABIS. The receiving entity may reject product delivered, but amount delivered must be limited to amount agreed upon in prior sales transaction.

Manifest #:	0000760818	Date Created:	6/7/2018 11:02 AM
Originating Entity:	OM Extracts	For OLCC Use Only	
Originating License Number:	030-10051970949		
Address of Originating Entity:	500 Industrial Circle, Units E, F, G, and H White City, OR 97503		
Phone No. of Originating Entity:	503-688-3289		
Contact Phone No. for Inquiries:	503-688-3289		
Destination # 1:	SC Laboratories	Destination Phone No.:	707-339-0050
Destination License Number:	010-1004748743D	Date and Approximate Time of Departure:	6/7/2018 10:56 AM
Address of Destination:	15865 SW 74th Avenue Ste 110 Tigard, OR 97224	Date and Approximate Time of Arrival:	6/7/2018 5:30 AM
		Date/Time Received:	6.7.18 5:31
		Notes: details for extenuating circumstances (e.g., road closure, flat tire, etc.)	
Route to be Traveled:	I-5 North to Tigard , OR Desitination Address: 15865 SW 74th Ave Tigard, OR 97224		
Name of Person Transporting:	Joel Glimpse/Elliot Parker	Handler Permit No. of Driver:	102682
State Driver's License No.:	9474950/A841077	Signature of Person Transporting:	
Make, Model, License Plate No.:	scion/nissan XB/NV 200 175 JLS/825 KAT		
Package Label	Harvest Name	Item Name	Weight/Quantity
1A4010300014ADD000003524 Status: Shipped	sour tsu 10/19	Sour Tsu - FECO (Extracts)	Shp: 17.0300 g
1A4010300014ADD000003523 Status: Shipped	css 11/6	CSS CO2 FECO (CBD) (Extracts)	Shp: 20.3100 g
PRODUCT REJECTION (if only a portion of shipment is rejected, circle that portion above)			
Name of Person Receiving or Rejecting Product:	Angelica Serr		
I confirm that the contents of this shipment match weight records entered above, and I agree to take custody of those portions of this shipment <i>not</i> circled above. Those portions circled were returned to the individual delivering this shipment.			
Signature:		Date:	6.7.18
Signature of individual taking receipt of rejected portion of this shipment:			

