

Sample Name: **Harle Tsu FECO Primary**
 Tested for: **OM Extracts**
Compliance Concentrate

Laboratory ID: 18H0005-03

Matrix: Extracts and Concentrates

Sample Metrc ID: 1A4010300014ADD000004485

Lot # NA

Date Sampled: 08/02/18 09:39

Batch RFID: 1A4010300014ADD000004489

Date Accepted: 08/02/18

Batch Size: 2724 (g)

Results Valid Until: 08/02/19



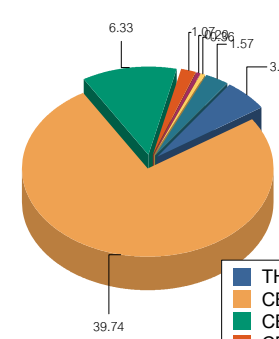
Potency Analysis

Date Extracted: 08/03/18

Analysis Method/SOP: Potency

Date Analyzed: 08/03/18

* - ORELAP certified analyte

Cannabinoids	% weight	mg/g	Cannabinoids Profile																
Total THC ((THCA*0.877)+d9)	3.01	30.1	 <table border="1"> <tr><td>THC</td><td>3.01</td></tr> <tr><td>CBD</td><td>39.74</td></tr> <tr><td>CBDA</td><td>6.33</td></tr> <tr><td>CBG</td><td>1.07</td></tr> <tr><td>CBGA</td><td>0.20</td></tr> <tr><td>CBDV</td><td>0.36</td></tr> <tr><td>CBC</td><td>1.57</td></tr> <tr><td>Total:</td><td>52.28</td></tr> </table>	THC	3.01	CBD	39.74	CBDA	6.33	CBG	1.07	CBGA	0.20	CBDV	0.36	CBC	1.57	Total:	52.28
THC	3.01																		
CBD	39.74																		
CBDA	6.33																		
CBG	1.07																		
CBGA	0.20																		
CBDV	0.36																		
CBC	1.57																		
Total:	52.28																		
Total CBD ((CBDA*0.877)+CBD)	45.29	452.9																	
d9-THC (d9-Tetrahydrocannabinol)*	3.01	30.1																	
d8-THC (d8-Tetrahydrocannabinol)*	< LOQ	< LOQ																	
THCA (d9-Tetrahydrocannabinolic Acid)*	< LOQ	< LOQ																	
CBD (Cannabidiol)*	39.74	397.4																	
CBDA (Cannabidiolic Acid)*	6.33	63.3																	
CBN (Cannabinol)*	< LOQ	< LOQ																	
CBG (Cannabigerol)*	1.07	10.7																	
CBGA (Cannabigerolic Acid)	0.20	2																	
CBDV (Cannabidivarin)*	0.36	3.6																	
CBDVA (Cannabidivarinic Acid)	< LOQ	< LOQ																	
CBC (Cannabichromene)*	1.57	15.7																	
THCV (Tetrahydrocannabivarin)	< LOQ	< LOQ																	
Total Cannabinoids	52.28	522.8																	

<LOQ - Results below the Limit of Quantitation - Compound not detected



Brian Weigel
Lab Director

These results relate only to the sample included on this report. The report may not be reproduced except in full, without the written permission of SC Laboratories. Samples tested in accordance with Oregon Administrative Rules, TNI 2009 Standard and SC Laboratories quality assurance plan unless otherwise noted.

Sample Name: **Harle Tsu FECO Duplicate**
 Tested for: **OM Extracts**
Compliance Concentrate

Laboratory ID: 18H0005-04

Matrix: Extracts and Concentrates

Sample Metrc ID: 1A4010300014ADD000004485

Lot # NA

Date Sampled: 08/02/18 09:41

Batch RFID: 1A4010300014ADD000004489

Date Accepted: 08/02/18

Batch Size: 2724 (g)

Results Valid Until: 08/02/19



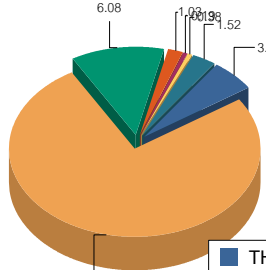
Potency Analysis

Date Extracted: 08/03/18

Analysis Method/SOP: Potency

Date Analyzed: 08/03/18

* - ORELAP certified analyte

Cannabinoids	% weight	mg/g	Cannabinoids Profile																
Total THC ((THCA*0.877)+d9)	3.02	30.2	 <table border="1"> <tr><td>THC</td><td>3.02</td></tr> <tr><td>CBD</td><td>38.78</td></tr> <tr><td>CBDA</td><td>6.08</td></tr> <tr><td>CBG</td><td>1.03</td></tr> <tr><td>CBGA</td><td>0.19</td></tr> <tr><td>CBDV</td><td>0.38</td></tr> <tr><td>CBC</td><td>1.52</td></tr> <tr><td>Total</td><td>51.00</td></tr> </table>	THC	3.02	CBD	38.78	CBDA	6.08	CBG	1.03	CBGA	0.19	CBDV	0.38	CBC	1.52	Total	51.00
THC	3.02																		
CBD	38.78																		
CBDA	6.08																		
CBG	1.03																		
CBGA	0.19																		
CBDV	0.38																		
CBC	1.52																		
Total	51.00																		
Total CBD ((CBDA*0.877)+CBD)	44.11	441.1																	
d9-THC (d9-Tetrahydrocannabinol)*	3.02	30.2																	
d8-THC (d8-Tetrahydrocannabinol)*	< LOQ	< LOQ																	
THCA (d9-Tetrahydrocannabinolic Acid)*	< LOQ	< LOQ																	
CBD (Cannabidiol)*	38.78	387.8																	
CBDA (Cannabidiolic Acid)*	6.08	60.8																	
CBN (Cannabinol)*	< LOQ	< LOQ																	
CBG (Cannabigerol)*	1.03	10.3																	
CBGA (Cannabigerolic Acid)	0.19	1.9																	
CBDV (Cannabidivarin)*	0.38	3.8																	
CBDVA (Cannabidivarinic Acid)	< LOQ	< LOQ																	
CBC (Cannabichromene)*	1.52	15.2																	
THCV (Tetrahydrocannabivarin)	< LOQ	< LOQ																	
Total Cannabinoids	50.81	508.1																	

<LOQ - Results below the Limit of Quantitation - Compound not detected

Sample Name: **Harle Tsu FECO**

Sample Metrc ID: 1A4010300014ADD000004485

	Primary Result	Duplicate Result	Average	% RPD	Pass/Fail (<20%RPD)
	%	%	%		
Total THC ((THCA*0.877)+d9)	3.01	3.02	3.02	0.332	PASS


 Brian Weigel
 Lab Director

These results relate only to the sample included on this report. The report may not be reproduced except in full, without the written permission of SC Laboratories. Samples tested in accordance with Oregon Administrative Rules, TNI 2009 Standard and SC Laboratories quality assurance plan unless otherwise noted.

Sample Name: Harle Tsu FECO Primary	Date Sampled: 08/02/18 09:39
Tested for: OM Extracts	Date Accepted: 08/02/18
Compliance Concentrate	Results Valid Until: 08/02/19
Laboratory ID: 18H0005-03	Sample Metrc ID: 1A4010300014ADD000004485
Matrix: Extracts and Concentrates	Batch RFID: 1A4010300014ADD000004489
Lot # NA	Batch Size: 2724 (g)

Terpene Analysis

Date Extracted: 08/03/18	Analysis Method/SOP: Terpenes				
Date Analyzed: 08/03/18					
Analyte	Result (%)	LOQ	Analyte	Result	LOQ
alpha Pinene	0.287	0.100	Myrcene	0.749	0.100
alpha Phellandrene	< LOQ	0.100	3-Carene	< LOQ	0.100
alpha Terpinene	< LOQ	0.100	Limonene	0.309	0.100
Terpinolene	0.400	0.100	Linalool	< LOQ	0.100
Fenchol	< LOQ	0.100	Borneol	< LOQ	0.100
Terpineol	< LOQ	0.100	Geraniol	< LOQ	0.100
alpha Humulene	0.625	0.100	beta Caryophyllene	1.721	0.100
Caryophyllene Oxide	< LOQ	0.100	alpha Bisabolol	0.342	0.100
Camphene	< LOQ	0.100	beta Pinene	< LOQ	0.100
Ocimene	< LOQ	0.100	Sabinene	< LOQ	0.100
Camphor	< LOQ	0.100	Isoborneol	< LOQ	0.100
Menthol	< LOQ	0.100	alpha Cedrene	< LOQ	0.100
Nerolidol	< LOQ	0.100	R-(+)-Pulegone	< LOQ	0.100
Eucalyptol	< LOQ	0.100	p-Cymene	< LOQ	0.100
(-)-Isopulegol	< LOQ	0.100	Geranyl Acetate	< LOQ	0.100
Guaiol	0.355	0.100	Valencene	0.196	0.100
Phytol	0.670	0.100	Citronellol	< LOQ	0.100
gamma-Terpinene	< LOQ	0.100			
			Total Terpenes	5.655 %	

<LOQ - Results below the Limit of Quantitation - Compound not detected
 Terpene Analysis is not ORELAP Accredited.

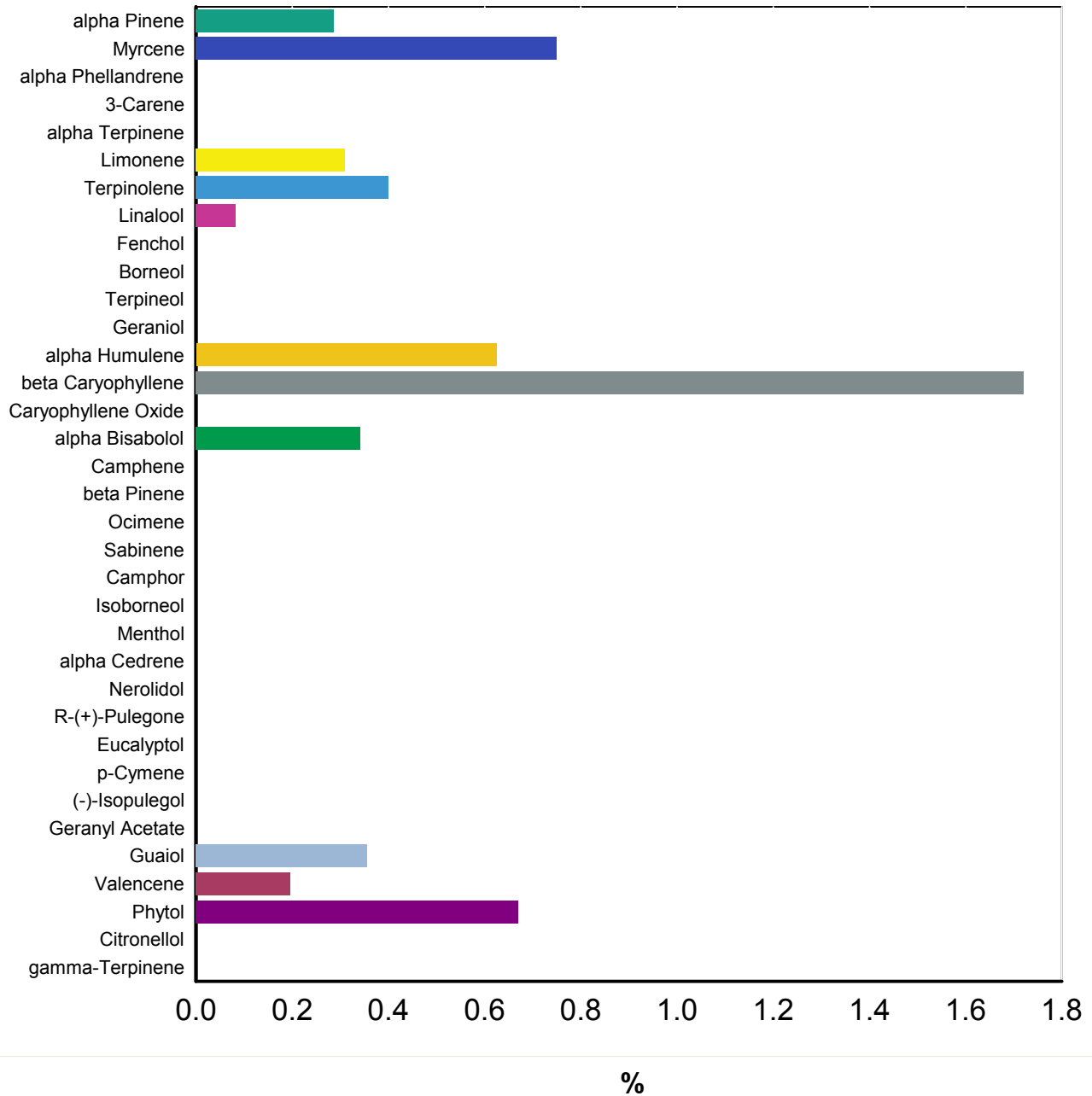


Brian Weigel
 Lab Director

These results relate only to the sample included on this report. The report may not be reproduced except in full, without the written permission of SC Laboratories. Samples tested in accordance with Oregon Administrative Rules, TNI 2009 Standard and SC Laboratories quality assurance plan unless otherwise noted.

Sample Name: Harle Tsu FECO Prima	Date Sampled: 08/02/18 09:39
Tested for: OM Extracts	Date Accepted: 08/02/18 16:57
Compliance Concentrate	Results Valid Until: 08/02/19
Laboratory ID: 18H0005-03 Matrix: Extracts and	Client/Metric ID: 1A4010300014ADD000004485

Terpene Profile




Brian Weigel
Lab Director

These results relate only to the sample included on this report. The report may not be reproduced except in full, without the written permission of SC Laboratories. Samples tested in accordance with Oregon Administrative Rules, TNI 2009 Standard and SC Laboratories quality assurance plan unless otherwise noted.

Sample Name: **Harle Tsu FECO Primary** Date Sampled: **08/02/18 09:39**
 Tested for: **OM Extracts** Date Accepted: **08/02/18**
Compliance Concentrate Results Valid Until: **08/02/19**

Laboratory ID: **18H0005-03** Sample Metrc ID: **1A4010300014ADD000004485**
 Matrix: **Extracts and Concentrates** Batch RFID: **1A4010300014ADD000004489**
 Lot # **NA** Batch Size: **2724 (g)**

Pesticide Analysis in ppm

Date Extracted: 08/03/18 Analysis Method/SOP: Pesticides
 Date Analyzed: 08/04/18 Results above the action levels are highlighted in red #.

Analyte	Result	Action Level	LOQ	Analyte	Result	Action Level	LOQ
Abamectin	< LOQ	0.5	0.243	Acephate	< LOQ	0.4	0.194
Acequinocyl	< LOQ	2	0.972	Acetamiprid	< LOQ	0.2	0.097
Aldicarb	< LOQ	0.4	0.194	Azoxystrobin	< LOQ	0.2	0.097
Bifenazate	< LOQ	0.2	0.097	Bifenthrin	< LOQ	0.2	0.097
Boscalid	< LOQ	0.4	0.194	Carbaryl	< LOQ	0.2	0.097
Carbofuran	< LOQ	0.2	0.097	Chlorantraniliprole	< LOQ	0.2	0.097
Chlorfenapyr	< LOQ	1	0.486	Chlorpyrifos	< LOQ	0.2	0.097
Clofentezine	< LOQ	0.2	0.097	Cyfluthrin	< LOQ	1	0.486
Cypermethrin	< LOQ	1	0.486	Daminozide	< LOQ	1	0.486
DDVP (Dichlorvos)	< LOQ	1	0.486	Diazinon	< LOQ	0.2	0.097
Dimethoate	< LOQ	0.2	0.097	Ethoprophos	< LOQ	0.2	0.097
Etofenprox	< LOQ	0.4	0.194	Etoxazole	< LOQ	0.2	0.097
Fenoxycarb	< LOQ	0.2	0.097	Fenpyroximate	< LOQ	0.4	0.194
Fipronil	< LOQ	0.4	0.194	Fonicamid	< LOQ	1	0.486
Fludioxonil	< LOQ	0.4	0.194	Hexythiazox	< LOQ	1	0.486
Imazalil	< LOQ	0.2	0.097	Imidacloprid	< LOQ	0.4	0.194
Kresoxim-methyl	< LOQ	0.4	0.194	Malathion	< LOQ	0.2	0.097
Metalaxyl	< LOQ	0.2	0.097	Methiocarb	< LOQ	0.2	0.097
Methomyl	< LOQ	0.4	0.194	Methyl parathion	< LOQ	0.2	0.097
MGK-264	< LOQ	0.2	0.097	Myclobutanil	< LOQ	0.2	0.097
Naled	< LOQ	0.5	0.243	Oxamyl	< LOQ	1	0.486
Paclobutrazol	< LOQ	0.4	0.194	Permethrins (total)	< LOQ	0.2	0.097
Phosmet	< LOQ	0.2	0.097	Piperonyl butoxide	< LOQ	2	0.486
Prallethrin	< LOQ	0.2	0.097	Propiconazole	< LOQ	0.4	0.194
Propoxur	< LOQ	0.2	0.097	Pyrethrins (total)	< LOQ	1	0.486
Pyridaben	< LOQ	0.2	0.097	Spinosad	< LOQ	0.2	0.097
Spiromesifen	< LOQ	0.2	0.097	Spirotetramat	< LOQ	0.2	0.097
Spiroxamine	< LOQ	0.4	0.194	Tebuconazole	< LOQ	0.4	0.194
Thiacloprid	< LOQ	0.2	0.097	Thiamethoxam	< LOQ	0.2	0.097
Trifloxystrobin	< LOQ	0.2	0.097				

<LOQ - Results below the Limit of Quantitation - Compound not detected



Brian Weigel
Lab Director

These results relate only to the sample included on this report. The report may not be reproduced except in full, without the written permission of SC Laboratories. Samples tested in accordance with Oregon Administrative Rules, TNI 2009 Standard and SC Laboratories quality assurance plan unless otherwise noted.

Sample Name: **Harle Tsu FECO Duplicate** Date Sampled: **08/02/18 09:41**
 Tested for: **OM Extracts** Date Accepted: **08/02/18**
Compliance Concentrate Results Valid Until: **08/02/19**

Laboratory ID: **18H0005-04** Sample Metrc ID: **1A4010300014ADD000004485**
 Matrix: **Extracts and Concentrates** Batch RFID: **1A4010300014ADD000004489**
 Lot # **NA** Batch Size: **2724 (g)**

Pesticide Analysis in ppm

Date Extracted: 08/03/18 Analysis Method/SOP: Pesticides
 Date Analyzed: 08/04/18 Results above the action levels are highlighted in red #.

Analyte	Result	Action Level	LOQ	Analyte	Result	Action Level	LOQ
Abamectin	< LOQ	0.5	0.246	Acephate	< LOQ	0.4	0.197
Acequinocyl	< LOQ	2	0.984	Acetamiprid	< LOQ	0.2	0.098
Aldicarb	< LOQ	0.4	0.197	Azoxystrobin	< LOQ	0.2	0.098
Bifenazate	< LOQ	0.2	0.098	Bifenthrin	< LOQ	0.2	0.098
Boscalid	< LOQ	0.4	0.197	Carbaryl	< LOQ	0.2	0.098
Carbofuran	< LOQ	0.2	0.098	Chlorantraniliprole	< LOQ	0.2	0.098
Chlorfenapyr	< LOQ	1	0.492	Chlorpyrifos	< LOQ	0.2	0.098
Clofentezine	< LOQ	0.2	0.098	Cyfluthrin	< LOQ	1	0.492
Cypermethrin	< LOQ	1	0.492	Daminozide	< LOQ	1	0.492
DDVP (Dichlorvos)	< LOQ	1	0.492	Diazinon	< LOQ	0.2	0.098
Dimethoate	< LOQ	0.2	0.098	Ethoprophos	< LOQ	0.2	0.098
Etofenprox	< LOQ	0.4	0.197	Etoxazole	< LOQ	0.2	0.098
Fenoxycarb	< LOQ	0.2	0.098	Fenpyroximate	< LOQ	0.4	0.197
Fipronil	< LOQ	0.4	0.197	Fonicamid	< LOQ	1	0.492
Fludioxonil	< LOQ	0.4	0.197	Hexythiazox	< LOQ	1	0.492
Imazalil	< LOQ	0.2	0.098	Imidacloprid	< LOQ	0.4	0.197
Kresoxim-methyl	< LOQ	0.4	0.197	Malathion	< LOQ	0.2	0.098
Metalaxyl	< LOQ	0.2	0.098	Methiocarb	< LOQ	0.2	0.098
Methomyl	< LOQ	0.4	0.197	Methyl parathion	< LOQ	0.2	0.098
MGK-264	< LOQ	0.2	0.098	Myclobutanil	< LOQ	0.2	0.098
Naled	< LOQ	0.5	0.246	Oxamyl	< LOQ	1	0.492
Paclobutrazol	< LOQ	0.4	0.197	Permethrins (total)	< LOQ	0.2	0.098
Phosmet	< LOQ	0.2	0.098	Piperonyl butoxide	< LOQ	2	0.492
Prallethrin	< LOQ	0.2	0.098	Propiconazole	< LOQ	0.4	0.197
Propoxur	< LOQ	0.2	0.098	Pyrethrins (total)	< LOQ	1	0.492
Pyridaben	< LOQ	0.2	0.098	Spinosad	< LOQ	0.2	0.098
Spiromesifen	< LOQ	0.2	0.098	Spirotetramat	< LOQ	0.2	0.098
Spiroxamine	< LOQ	0.4	0.197	Tebuconazole	< LOQ	0.4	0.197
Thiacloprid	< LOQ	0.2	0.098	Thiamethoxam	< LOQ	0.2	0.098
Trifloxystrobin	< LOQ	0.2	0.098				

<LOQ - Results below the Limit of Quantitation - Compound not detected



Brian Weigel
Lab Director

These results relate only to the sample included on this report. The report may not be reproduced except in full, without the written permission of SC Laboratories. Samples tested in accordance with Oregon Administrative Rules, TNI 2009 Standard and SC Laboratories quality assurance plan unless otherwise noted.

Sample Name: Harle Tsu FECO Primary	Date Sampled: 08/02/18 09:39
Tested for: OM Extracts	Date Accepted: 08/02/18
Compliance Concentrate	Results Valid Until: 08/02/19
Laboratory ID: 18H0005-03	Sample Metric ID: 1A4010300014ADD000004485
Matrix: Extracts and Concentrates	Batch RFID: 1A4010300014ADD000004489
Lot # NA	Batch Size: 2724 (g)

Residual Solvents

Solvent	Results in ug/g	Action Level	LOQ	Date Extracted: 08/03/18
1,4-Dioxane	< LOQ	380	71.3	Date Analyzed: 08/03/18
2-Butanol	< LOQ	5000	438	Analysis Method/SOP: RST
2-Ethoxyethanol	< LOQ	160	30.0	
2-Propanol (IPA)	< LOQ	5000	438	
Acetone	< LOQ	5000	438	
Acetonitrile	< LOQ	400	76.9	
Benzene	< LOQ	2	0.750	
Butanes	< LOQ	5000	313	
Cyclohexane	< LOQ	3880	728	
Dichloromethane (methylene chloride)	< LOQ	600	113	
Ethyl acetate	< LOQ	5000	438	
Ethyl ether	< LOQ	5000	438	
Ethylbenzene	< LOQ	2170	406	
Ethylene glycol	< LOQ	620	116	
Ethylene oxide	< LOQ	50	37.5	
Heptane	< LOQ	5000	438	
Hexanes	< LOQ	290	54.4	
Isopropyl acetate	< LOQ	5000	438	
Isopropylbenzene (cumene)	< LOQ	70	13.1	
Methanol	< LOQ	3000	313	
Pentanes	< LOQ	5000	438	
Propane	< LOQ	5000	125	
Tetrahydrofuran	< LOQ	720	135	
Toluene	< LOQ	890	167	
Xylenes	< LOQ	2170	406	

<LOQ - Results below the Limit of Quantitation - Compound not detected
 Results above the Action Level fail state testing requirements and will be highlighted **Red #**.



Brian Weigel
 Lab Director

These results relate only to the sample included on this report. The report may not be reproduced except in full, without the written permission of SC Laboratories. Samples tested in accordance with Oregon Administrative Rules, TNI 2009 Standard and SC Laboratories quality assurance plan unless otherwise noted.

Sample Name: Harle Tsu FECO Duplicate	Date Sampled: 08/02/18 09:41
Tested for: OM Extracts	Date Accepted: 08/02/18
Compliance Concentrate	Results Valid Until: 08/02/19
Laboratory ID: 18H0005-04	Sample Metric ID: 1A4010300014ADD000004485
Matrix: Extracts and Concentrates	Batch RFID: 1A4010300014ADD000004489
Lot # NA	Batch Size: 2724 (g)

Residual Solvents

Solvent	Results in ug/g	Action Level	LOQ
1,4-Dioxane	< LOQ	380	71.3
2-Butanol	< LOQ	5000	438
2-Ethoxyethanol	< LOQ	160	30.0
2-Propanol (IPA)	< LOQ	5000	438
Acetone	< LOQ	5000	438
Acetonitrile	< LOQ	400	76.9
Benzene	< LOQ	2	0.750
Butanes	< LOQ	5000	313
Cyclohexane	< LOQ	3880	728
Dichloromethane (methylene chloride)	< LOQ	600	113
Ethyl acetate	< LOQ	5000	438
Ethyl ether	< LOQ	5000	438
Ethylbenzene	< LOQ	2170	406
Ethylene glycol	< LOQ	620	116
Ethylene oxide	< LOQ	50	37.5
Heptane	< LOQ	5000	438
Hexanes	< LOQ	290	54.4
Isopropyl acetate	< LOQ	5000	438
Isopropylbenzene (cumene)	< LOQ	70	13.1
Methanol	< LOQ	3000	313
Pentanes	< LOQ	5000	438
Propane	< LOQ	5000	125
Tetrahydrofuran	< LOQ	720	135
Toluene	< LOQ	890	167
Xylenes	< LOQ	2170	406

Date Extracted: 08/03/18
 Date Analyzed: 08/03/18
 Analysis Method/SOP: RST

<LOQ - Results below the Limit of Quantitation - Compound not detected
 Results above the Action Level fail state testing requirements and will be highlighted **Red #**.



Brian Weigel
Lab Director

These results relate only to the sample included on this report. The report may not be reproduced except in full, without the written permission of SC Laboratories. Samples tested in accordance with Oregon Administrative Rules, TNI 2009 Standard and SC Laboratories quality assurance plan unless otherwise noted.

Case Narrative

RST - Isopropylbenzene results exceeded the QC recovery criteria in the Matrix Spike and Matrix Spike Duplicate due to coelution with alpha-Pinene. This pertains to samples 18H0005-01 through 18H0005-06.

Ethylene Glycol results exceeded the QC recovery criteria in the Matrix Spike and Blank Spike. This pertains to samples 18H0005-01 through 18H0005-06.

Ethanol results exceeded the instrument calibration in sample 18H0005-01 and -02 are estimated in excess of 1500

**Quality Control
Potency**

Batch: B180636 - Potency/Terpenes

Blank(B180636-BLK1)			Extracted - 08/03/18 15:30 Analyzed - 08/03/18 17:25					
Analyte	Result	Units	Spike Level	Source Result	%REC	%REC Limits	RPD	RPD Limit
d9-THC (d9-Tetrahydrocannabinol)	< LOQ	%						
d8-THC (d8-Tetrahydrocannabinol)	< LOQ	%						
THCA (d9-Tetrahydrocannabinolic Acid)	< LOQ	%						
CBD (Cannabidiol)	< LOQ	%						
CBDA (Cannabidiolic Acid)	< LOQ	%						
CBN (Cannabinol)	< LOQ	%						
CBG (Cannabigerol)	< LOQ	%						
CBGA (Cannabigerolic Acid)	< LOQ	%						
CBDV (Cannabidivarin)	< LOQ	%						
CBDVA (Cannabidivarinic Acid)	< LOQ	%						
CBC (Cannabichromene)	< LOQ	%						
THCV (Tetrahydrocannabivarin)	< LOQ	%						

Duplicate(B180636-DUP1)			Extracted - 08/03/18 15:30 Analyzed - 08/03/18 17:42					
Analyte	Result	Units	Spike Level	Source Result	%REC	%REC Limits	RPD	RPD Limit
d9-THC (d9-Tetrahydrocannabinol)	3.30	%		3.01			9.25	20
d8-THC (d8-Tetrahydrocannabinol)	< LOQ	%		< LOQ				20
THCA (d9-Tetrahydrocannabinolic Acid)	< LOQ	%		< LOQ				20
CBD (Cannabidiol)	39.49	%		39.74			0.626	20
CBDA (Cannabidiolic Acid)	6.17	%		6.33			2.49	20
CBN (Cannabinol)	< LOQ	%		< LOQ				20
CBG (Cannabigerol)	1.05	%		1.07			1.78	20
CBGA (Cannabigerolic Acid)	0.19	%		0.20			5.56	20



Brian Weigel
Lab Director

These results relate only to the sample included on this report. The report may not be reproduced except in full, without the written permission of SC Laboratories. Samples tested in accordance with Oregon Administrative Rules, TNI 2009 Standard and SC Laboratories quality assurance plan unless otherwise noted.

Quality Control Potency (Continued)

Batch: B180636 - Potency/Terpenes (Continued)

Duplicate(B180636-DUP1)		Extracted - 08/03/18 15:30		Analyzed - 08/03/18 17:42				
Analyte	Result	Units	Spike Level	Source Result	%REC	%REC Limits	RPD	RPD Limit
CBDV (Cannabidivarin)	0.37	%		0.36			3.45	20
CBDVA (Cannabidivarinic Acid)	< LOQ	%		< LOQ				20
CBC (Cannabichromene)	1.57	%		1.57			0.0975	20
THCV (Tetrahydrocannabivarin)	< LOQ	%		< LOQ				20

LCS(B180636-BS1)		Extracted - 08/03/18 15:30		Analyzed - 08/06/18 9:41				
Analyte	Result	Units	Spike Level	Source Result	%REC	%REC Limits	RPD	RPD Limit
d9-THC (d9-Tetrahydrocannabinol)	0.19	%	0.200		96.7	80-120		
CBD (Cannabidiol)	0.20	%	0.200		99.5	80-120		
CBDA (Cannabidiolic Acid)	0.18	%	0.200		89.9	80-120		
CBN (Cannabinol)	0.19	%	0.200		95.1	80-120		



Brian Weigel
Lab Director

These results relate only to the sample included on this report. The report may not be reproduced except in full, without the written permission of SC Laboratories. Samples tested in accordance with Oregon Administrative Rules, TNI 2009 Standard and SC Laboratories quality assurance plan unless otherwise noted.

Quality Control Pesticide Analysis

Batch: B180635 - Pesticide Prep

Blank(B180635-BLK1)		Extracted - 08/03/18 14:30 Analyzed - 08/04/18 1:37						
Analyte	Result	Units	Spike Level	Source Result	%REC	%REC Limits	RPD	RPD Limit
Abamectin	< LOQ	ppm						
Acephate	< LOQ	ppm						
Acequinocyl	< LOQ	ppm						
Acetamiprid	< LOQ	ppm						
Aldicarb	< LOQ	ppm						
Azoxystrobin	< LOQ	ppm						
Bifenazate	< LOQ	ppm						
Bifenthrin	< LOQ	ppm						
Boscalid	< LOQ	ppm						
Carbaryl	< LOQ	ppm						
Carbofuran	< LOQ	ppm						
Chlorantraniliprole	< LOQ	ppm						
Chlorfenapyr	< LOQ	ppm						
Chlorpyrifos	< LOQ	ppm						
Clofentezine	< LOQ	ppm						
Cyfluthrin	< LOQ	ppm						
Cypermethrin	< LOQ	ppm						
Daminozide	< LOQ	ppm						
DDVP (Dichlorvos)	< LOQ	ppm						
Diazinon	< LOQ	ppm						
Dimethoate	< LOQ	ppm						
Ethoprophos	< LOQ	ppm						
Etofenprox	< LOQ	ppm						
Etoxazole	< LOQ	ppm						
Fenoxycarb	< LOQ	ppm						
Fenpyroximate	< LOQ	ppm						
Fipronil	< LOQ	ppm						
Fonicamid	< LOQ	ppm						
Fludioxonil	< LOQ	ppm						
Hexythiazox	< LOQ	ppm						
Imazalil	< LOQ	ppm						
Imidacloprid	< LOQ	ppm						
Kresoxim-methyl	< LOQ	ppm						
Malathion	< LOQ	ppm						
Metalaxyl	< LOQ	ppm						



Brian Weigel
Lab Director

These results relate only to the sample included on this report. The report may not be reproduced except in full, without the written permission of SC Laboratories. Samples tested in accordance with Oregon Administrative Rules, TNI 2009 Standard and SC Laboratories quality assurance plan unless otherwise noted.

Quality Control

Pesticide Analysis (Continued)

Batch: B180635 - Pesticide Prep (Continued)

Blank(B180635-BLK1)			Extracted - 08/03/18 14:30 Analyzed - 08/04/18 1:37					
Analyte	Result	Units	Spike Level	Source Result	%REC	%REC Limits	RPD	RPD Limit
Methiocarb	< LOQ	ppm						
Methomyl	< LOQ	ppm						
Methyl parathion	< LOQ	ppm						
MGK-264	< LOQ	ppm						
Myclobutanil	< LOQ	ppm						
Naled	< LOQ	ppm						
Oxamyl	< LOQ	ppm						
Paclbutrazol	< LOQ	ppm						
Permethrins (total)	< LOQ	ppm						
Phosmet	< LOQ	ppm						
Piperonyl butoxide	< LOQ	ppm						
Prallethrin	< LOQ	ppm						
Propiconazole	< LOQ	ppm						
Propoxur	< LOQ	ppm						
Pyrethrins (total)	< LOQ	ppm						
Pyridaben	< LOQ	ppm						
Spinosad	< LOQ	ppm						
Spiromesifen	< LOQ	ppm						
Spirotetramat	< LOQ	ppm						
Spiroxamine	< LOQ	ppm						
Tebuconazole	< LOQ	ppm						
Thiacloprid	< LOQ	ppm						
Thiamethoxam	< LOQ	ppm						
Trifloxystrobin	< LOQ	ppm						

LCS(B180635-BS1)			Extracted - 08/03/18 14:30 Analyzed - 08/04/18 1:53					
Analyte	Result	Units	Spike Level	Source Result	%REC	%REC Limits	RPD	RPD Limit
Acephate	0.92	ppm	1.00		92.2	70-130		
Acetamiprid	0.93	ppm	1.00		92.6	70-130		
Aldicarb	0.90	ppm	1.00		90.0	70-130		
Bifenazate	0.77	ppm	1.00		77.4	70-130		
Boscalid	0.92	ppm	1.00		92.0	70-130		
Chlorantraniliprole	0.89	ppm	1.00		88.8	70-130		
Chlorpyrifos	0.67	ppm	1.00		66.7	70-130		
Cyfluthrin	0.76	ppm	1.00		76.3	70-130		



Brian Weigel
Lab Director

These results relate only to the sample included on this report. The report may not be reproduced except in full, without the written permission of SC Laboratories. Samples tested in accordance with Oregon Administrative Rules, TNI 2009 Standard and SC Laboratories quality assurance plan unless otherwise noted.

Quality Control Pesticide Analysis (Continued)

Batch: B180635 - Pesticide Prep (Continued)

LCS(B180635-BS1)		Extracted - 08/03/18 14:30 Analyzed - 08/04/18 1:53						
Analyte	Result	Units	Spike Level	Source Result	%REC	%REC Limits	RPD	RPD Limit
DDVP (Dichlorvos)	0.96	ppm	1.00		95.8	70-130		
Ethoprophos	0.69	ppm	1.00		69.0	70-130		
Etoxazole	0.69	ppm	1.00		69.3	70-130		
Fenoxycarb	0.74	ppm	1.00		73.7	70-130		
Flonicamid	0.96	ppm	1.00		95.5	70-130		
Imazalil	0.93	ppm	1.00		92.7	70-130		
Imidacloprid	0.86	ppm	1.00		86.4	70-130		
Methiocarb	0.93	ppm	1.00		92.8	70-130		
Myclobutanil	0.80	ppm	1.00		80.2	70-130		
Oxamyl	0.94	ppm	1.00		93.7	70-130		
Paclobutrazol	0.93	ppm	1.00		93.3	70-130		
Piperonyl butoxide	0.74	ppm	1.00		73.6	70-130		
Prallethrin	0.77	ppm	1.00		77.1	70-130		
Propoxur	0.89	ppm	1.00		89.2	70-130		
Spiromesifen	0.74	ppm	1.00		74.0	70-130		
Spiroxamine	0.47	ppm	1.00		47.1	70-130		
Thiacloprid	0.87	ppm	1.00		87.1	70-130		
Thiamethoxam	0.96	ppm	1.00		95.5	70-130		
Trifloxystrobin	0.82	ppm	1.00		82.1	70-130		

Matrix Spike(B180635-MS1)		Extracted - 08/03/18 14:30 Analyzed - 08/04/18 2:09						
Analyte	Result	Units	Spike Level	Source Result	%REC	%REC Limits	RPD	RPD Limit
Acephate	1.70	ppm	2.00	< LOQ	85.2	70-130		
Acetamiprid	1.77	ppm	2.00	< LOQ	88.5	70-130		
Aldicarb	1.54	ppm	2.00	< LOQ	76.9	70-130		
Bifenazate	1.73	ppm	2.00	< LOQ	86.4	70-130		
Boscalid	2.22	ppm	2.00	< LOQ	111	70-130		
Chlorantraniliprole	1.93	ppm	2.00	< LOQ	96.7	70-130		
Chlorpyrifos	1.86	ppm	2.00	< LOQ	93.1	70-130		
Cyfluthrin	1.26	ppm	2.00	< LOQ	63.1	70-130		
DDVP (Dichlorvos)	1.59	ppm	2.00	< LOQ	79.5	70-130		
Ethoprophos	1.52	ppm	2.00	< LOQ	76.1	70-130		
Etoxazole	1.99	ppm	2.00	< LOQ	99.7	70-130		
Fenoxycarb	1.62	ppm	2.00	< LOQ	81.1	70-130		
Flonicamid	1.82	ppm	2.00	< LOQ	91.1	70-130		



Brian Weigel
 Lab Director

These results relate only to the sample included on this report. The report may not be reproduced except in full, without the written permission of SC Laboratories. Samples tested in accordance with Oregon Administrative Rules, TNI 2009 Standard and SC Laboratories quality assurance plan unless otherwise noted.

Quality Control

Pesticide Analysis (Continued)

Batch: B180635 - Pesticide Prep (Continued)

Matrix Spike(B180635-MS1)			Extracted - 08/03/18 14:30 Analyzed - 08/04/18 2:09						
Analyte	Result	Units	Spike Level	Source Result	%REC	%REC Limits	RPD	RPD Limit	
Imazalil	1.83	ppm	2.00	< LOQ	91.7	70-130			
Imidacloprid	1.72	ppm	2.00	< LOQ	86.2	70-130			
Methiocarb	1.86	ppm	2.00	< LOQ	92.9	70-130			
Myclobutanil	1.67	ppm	2.00	< LOQ	83.7	70-130			
Oxamyl	1.74	ppm	2.00	< LOQ	87.3	70-130			
Paclobutrazol	1.86	ppm	2.00	< LOQ	92.9	70-130			
Piperonyl butoxide	1.99	ppm	2.00	0.06	97.0	70-130			
Prallethrin	1.51	ppm	2.00	< LOQ	75.6	70-130			
Propoxur	1.60	ppm	2.00	< LOQ	79.8	70-130			
Spiromesifen	1.55	ppm	2.00	< LOQ	77.7	70-130			
Spiroxamine	0.98	ppm	2.00	< LOQ	49.1	70-130			
Thiacloprid	1.79	ppm	2.00	< LOQ	89.7	70-130			
Thiamethoxam	1.86	ppm	2.00	< LOQ	92.9	70-130			
Trifloxystrobin	1.77	ppm	2.00	< LOQ	88.4	70-130			

Matrix Spike Dup(B180635-MSD1)			Extracted - 08/03/18 14:30 Analyzed - 08/04/18						
Analyte	Result	Units	Spike Level	Source Result	%REC	%REC Limits	RPD	RPD Limit	
Acephate	1.75	ppm	1.99	< LOQ	88.1	70-130	3.35	30	
Acetamiprid	1.82	ppm	1.99	< LOQ	91.8	70-130	3.69	30	
Aldicarb	1.45	ppm	1.99	< LOQ	73.0	70-130	5.22	30	
Bifenazate	1.74	ppm	1.99	< LOQ	87.4	70-130	1.09	30	
Boscalid	2.30	ppm	1.99	< LOQ	116	70-130	4.08	30	
Chlorantraniliprole	1.72	ppm	1.99	< LOQ	86.6	70-130	11.0	30	
Chlorpyrifos	1.78	ppm	1.99	< LOQ	89.7	70-130	3.72	30	
Cyfluthrin	1.35	ppm	1.99	< LOQ	67.8	70-130	7.16	30	
DDVP (Dichlorvos)	1.53	ppm	1.99	< LOQ	77.2	70-130	2.90	30	
Ethoprophos	1.49	ppm	1.99	< LOQ	75.2	70-130	1.16	30	
Etoxazole	1.93	ppm	1.99	< LOQ	97.1	70-130	2.65	30	
Fenoxycarb	1.65	ppm	1.99	< LOQ	83.0	70-130	2.31	30	
Flonicamid	1.74	ppm	1.99	< LOQ	87.5	70-130	4.04	30	
Imazalil	1.90	ppm	1.99	< LOQ	95.6	70-130	4.14	30	
Imidacloprid	1.66	ppm	1.99	< LOQ	83.7	70-130	2.94	30	
Methiocarb	1.80	ppm	1.99	< LOQ	90.5	70-130	2.66	30	
Myclobutanil	1.65	ppm	1.99	< LOQ	83.0	70-130	0.895	30	
Oxamyl	1.74	ppm	1.99	< LOQ	87.5	70-130	0.264	30	



Brian Weigel
Lab Director

These results relate only to the sample included on this report. The report may not be reproduced except in full, without the written permission of SC Laboratories. Samples tested in accordance with Oregon Administrative Rules, TNI 2009 Standard and SC Laboratories quality assurance plan unless otherwise noted.

Quality Control Pesticide Analysis (Continued)

Batch: B180635 - Pesticide Prep (Continued)

Matrix Spike Dup(B180635-MSD1)			Extracted - 08/03/18 14:30 Analyzed - 08/04/18					
Analyte	Result	Units	Spike Level	Source Result	%REC	%REC Limits	RPD	RPD Limit
Paclbutrazol	1.87	ppm	1.99	< LOQ	93.9	70-130	1.08	30
Piperonyl butoxide	1.92	ppm	1.99	0.06	93.7	70-130	3.43	30
Prallethrin	1.50	ppm	1.99	< LOQ	75.4	70-130	0.323	30
Propoxur	1.51	ppm	1.99	< LOQ	76.2	70-130	4.57	30
Spiromesifen	1.52	ppm	1.99	< LOQ	76.8	70-130	1.17	30
Spiroxamine	0.93	ppm	1.99	< LOQ	46.9	70-130	4.71	30
Thiacloprid	1.28	ppm	1.99	< LOQ	64.5	70-130	32.7	30
Thiamethoxam	1.90	ppm	1.99	< LOQ	95.4	70-130	2.69	30
Trifloxystrobin	1.72	ppm	1.99	< LOQ	86.6	70-130	2.02	30



Brian Weigel
Lab Director

These results relate only to the sample included on this report. The report may not be reproduced except in full, without the written permission of SC Laboratories. Samples tested in accordance with Oregon Administrative Rules, TNI 2009 Standard and SC Laboratories quality assurance plan unless otherwise noted.

Quality Control Solvent Analysis

Batch: B180638 - Residual Solvent Prep

Blank(B180638-BLK1)			Extracted - 08/03/18 15:00 Analyzed - 08/03/18 18:14					
Analyte	Result	Units	Spike Level	Source Result	%REC	%REC Limits	RPD	RPD Limit
1,4-Dioxane	< LOQ	ug/g						
2-Butanol	< LOQ	ug/g						
2-Ethoxyethanol	< LOQ	ug/g						
2-Propanol (IPA)	< LOQ	ug/g						
Acetone	< LOQ	ug/g						
Acetonitrile	< LOQ	ug/g						
Benzene	< LOQ	ug/g						
Butanes	< LOQ	ug/g						
Cyclohexane	< LOQ	ug/g						
Dichloromethane (methylene chloride)	< LOQ	ug/g						
Ethyl acetate	< LOQ	ug/g						
Ethyl ether	< LOQ	ug/g						
Ethylbenzene	< LOQ	ug/g						
Ethylene glycol	< LOQ	ug/g						
Ethylene oxide	< LOQ	ug/g						
Heptane	< LOQ	ug/g						
Hexanes	< LOQ	ug/g						
Isopropyl acetate	< LOQ	ug/g						
Isopropylbenzene (cumene)	< LOQ	ug/g						
Methanol	< LOQ	ug/g						
Pentanes	< LOQ	ug/g						
Propane	< LOQ	ug/g						
Tetrahydrofuran	< LOQ	ug/g						
Toluene	< LOQ	ug/g						
Xylenes	< LOQ	ug/g						

LCS(B180638-BS1)			Extracted - 08/03/18 15:00 Analyzed - 08/03/18 17:11					
Analyte	Result	Units	Spike Level	Source Result	%REC	%REC Limits	RPD	RPD Limit
1,4-Dioxane	582	ug/g	570		102	70-130		
2,2-Dimethylbutane	456	ug/g	435		105	70-130		
2-Butanol	3820	ug/g	3500		109	70-130		
2-Ethoxyethanol	269	ug/g	240		112	70-130		
2-Methylbutane (isopentane)	3880	ug/g	3500		111	70-130		
2-Methylpentane/2,3-Dimethylbutane	933	ug/g	870		107	70-130		
2-Propanol (IPA)	3980	ug/g	3500		114	70-130		



Brian Weigel
Lab Director

These results relate only to the sample included on this report. The report may not be reproduced except in full, without the written permission of SC Laboratories. Samples tested in accordance with Oregon Administrative Rules, TNI 2009 Standard and SC Laboratories quality assurance plan unless otherwise noted.

Quality Control

Solvent Analysis (Continued)

Batch: B180638 - Residual Solvent Prep (Continued)

LCS(B180638-BS1)		Extracted - 08/03/18 15:00 Analyzed - 08/03/18 17:11						
Analyte	Result	Units	Spike Level	Source Result	%REC	%REC Limits	RPD	RPD Limit
3-Methylpentane	460	ug/g	435		106	70-130		
Acetone	4090	ug/g	3500		117	70-130		
Acetonitrile	683	ug/g	615		111	70-130		
Benzene	3.22	ug/g	3.00		107	70-130		
Cyclohexane	6330	ug/g	5820		109	70-130		
Dichloromethane (methylene chloride)	1030	ug/g	900		114	70-130		
Ethyl acetate	3720	ug/g	3500		106	70-130		
Ethyl ether	3950	ug/g	3500		113	70-130		
Ethylbenzene	3200	ug/g	3250		98.4	70-130		
Ethylene glycol	1220	ug/g	930		131	70-130		
Heptane	3730	ug/g	3500		107	70-130		
Isopropyl acetate	3850	ug/g	3500		110	70-130		
Isopropylbenzene (cumene)	97.9	ug/g	105		93.2	70-130		
m,p-Xylene	6670	ug/g	6510		102	70-130		
Methanol	2930	ug/g	2500		117	70-130		
n-Hexane	453	ug/g	435		104	70-130		
n-Pentane	3920	ug/g	3500		112	70-130		
Tetrahydrofuran	1080	ug/g	1080		100	70-130		
Toluene	1350	ug/g	1340		101	70-130		
o-Xylene	3260	ug/g	3250		100	70-130		

Matrix Spike(B180638-MS1)		Extracted - 08/03/18 15:00 Analyzed - 08/03/18 17:32						
Analyte	Result	Units	Spike Level	Source Result	%REC	%REC Limits	RPD	RPD Limit
1,4-Dioxane	494	ug/g	524	< LOQ	94.2	70-130		
2,2-Dimethylbutane	407	ug/g	400	< LOQ	102	70-130		
2-Butanol	3330	ug/g	3220	< LOQ	103	70-130		
2-Ethoxyethanol	229	ug/g	221	< LOQ	104	70-130		
2-Methylbutane (isopentane)	3460	ug/g	3220	< LOQ	107	70-130		
2-Methylpentane/2,3-Dimethylbutane	839	ug/g	800	< LOQ	105	70-130		
2-Propanol (IPA)	3470	ug/g	3220	< LOQ	108	70-130		
3-Methylpentane	414	ug/g	400	< LOQ	104	70-130		
Acetone	3590	ug/g	3220	178	106	70-130		
Acetonitrile	591	ug/g	566	< LOQ	105	70-130		
Benzene	2.93	ug/g	2.76	< LOQ	106	70-130		
Cyclohexane	5790	ug/g	5360	< LOQ	108	70-130		



 Brian Weigel
 Lab Director

These results relate only to the sample included on this report. The report may not be reproduced except in full, without the written permission of SC Laboratories. Samples tested in accordance with Oregon Administrative Rules, TNI 2009 Standard and SC Laboratories quality assurance plan unless otherwise noted.

Quality Control

Solvent Analysis (Continued)

Batch: B180638 - Residual Solvent Prep (Continued)

Matrix Spike(B180638-MS1)			Extracted - 08/03/18 15:00 Analyzed - 08/03/18 17:32					
Analyte	Result	Units	Spike Level	Source Result	%REC	%REC Limits	RPD	RPD Limit
Dichloromethane (methylene chloride)	914	ug/g	828	< LOQ	110	70-130		
Ethyl acetate	4220	ug/g	3220	1050	98.6	70-130		
Ethyl ether	3460	ug/g	3220	< LOQ	108	70-130		
Ethylbenzene	2920	ug/g	2990	< LOQ	97.6	70-130		
Ethylene glycol	1100	ug/g	855	< LOQ	128	70-130		
Heptane	3400	ug/g	3220	< LOQ	106	70-130		
Isopropyl acetate	3340	ug/g	3220	< LOQ	104	70-130		
Isopropylbenzene (cumene)	139	ug/g	96.6	< LOQ	144	70-130		
m,p-Xylene	6050	ug/g	5990	< LOQ	101	70-130		
Methanol	2550	ug/g	2300	71.1	108	70-130		
n-Hexane	405	ug/g	400	< LOQ	101	70-130		
n-Pentane	3380	ug/g	3220	< LOQ	105	70-130		
Tetrahydrofuran	933	ug/g	993	< LOQ	94.0	70-130		
Toluene	1230	ug/g	1230	< LOQ	100	70-130		
o-Xylene	2960	ug/g	2990	< LOQ	98.9	70-130		

Matrix Spike Dup(B180638-MSD1)			Extracted - 08/03/18 15:00 Analyzed - 08/03/18					
Analyte	Result	Units	Spike Level	Source Result	%REC	%REC Limits	RPD	RPD Limit
1,4-Dioxane	534	ug/g	549	< LOQ	97.2	70-130	7.81	30
2,2-Dimethylbutane	426	ug/g	419	< LOQ	102	70-130	4.70	30
2-Butanol	3520	ug/g	3370	< LOQ	104	70-130	5.65	30
2-Ethoxyethanol	248	ug/g	231	< LOQ	107	70-130	8.01	30
2-Methylbutane (isopentane)	3550	ug/g	3370	< LOQ	105	70-130	2.55	30
2-Methylpentane/2,3-Dimethylbutane	871	ug/g	839	< LOQ	104	70-130	3.69	30
2-Propanol (IPA)	3630	ug/g	3370	< LOQ	108	70-130	4.55	30
3-Methylpentane	434	ug/g	419	< LOQ	104	70-130	4.73	30
Acetone	3720	ug/g	3370	178	105	70-130	3.53	30
Acetonitrile	625	ug/g	593	< LOQ	105	70-130	5.49	30
Benzene	3.12	ug/g	2.89	< LOQ	108	70-130	6.11	30
Cyclohexane	6070	ug/g	5610	< LOQ	108	70-130	4.83	30
Dichloromethane (methylene chloride)	949	ug/g	867	< LOQ	109	70-130	3.79	30
Ethyl acetate	4420	ug/g	3370	1050	99.9	70-130	4.56	30
Ethyl ether	3590	ug/g	3370	< LOQ	106	70-130	3.55	30
Ethylbenzene	3100	ug/g	3130	< LOQ	99.1	70-130	6.24	30
Ethylene glycol	1190	ug/g	896	< LOQ	132	70-130	7.75	30



 Brian Weigel
 Lab Director

These results relate only to the sample included on this report. The report may not be reproduced except in full, without the written permission of SC Laboratories. Samples tested in accordance with Oregon Administrative Rules, TNI 2009 Standard and SC Laboratories quality assurance plan unless otherwise noted.

Quality Control Solvent Analysis (Continued)

Batch: B180638 - Residual Solvent Prep (Continued)

Matrix Spike Dup(B180638-MSD1)			Extracted - 08/03/18 15:00 Analyzed - 08/03/18					
Analyte	Result	Units	Spike Level	Source Result	%REC	%REC Limits	RPD	RPD Limit
Heptane	3550	ug/g	3370	< LOQ	105	70-130	4.27	30
Isopropyl acetate	3520	ug/g	3370	< LOQ	104	70-130	5.11	30
Isopropylbenzene (cumene)	145	ug/g	101	< LOQ	144	70-130	4.49	30
m,p-Xylene	6420	ug/g	6280	< LOQ	102	70-130	5.96	30
Methanol	2670	ug/g	2410	71.1	108	70-130	4.74	30
n-Hexane	427	ug/g	419	< LOQ	102	70-130	5.44	30
n-Pentane	3480	ug/g	3370	< LOQ	103	70-130	2.94	30
Tetrahydrofuran	982	ug/g	1040	< LOQ	94.3	70-130	5.07	30
Toluene	1300	ug/g	1290	< LOQ	101	70-130	4.92	30
o-Xylene	3170	ug/g	3130	< LOQ	101	70-130	7.11	30



Brian Weigel
Lab Director

These results relate only to the sample included on this report. The report may not be reproduced except in full, without the written permission of SC Laboratories. Samples tested in accordance with Oregon Administrative Rules, TNI 2009 Standard and SC Laboratories quality assurance plan unless otherwise noted.

Quality Control Terpene Analysis

Batch: B180637 - Potency/Terpenes

Blank(B180637-BLK1)			Extracted - 08/03/18 15:30 Analyzed - 08/03/18 17:08					
Analyte	Result	Units	Spike Level	Source Result	%REC	%REC Limits	RPD	RPD Limit
alpha Pinene	< LOQ	%						
Myrcene	< LOQ	%						
alpha Phellandrene	< LOQ	%						
3-Carene	< LOQ	%						
alpha Terpinene	< LOQ	%						
Limonene	< LOQ	%						
Terpinolene	< LOQ	%						
Linalool	< LOQ	%						
Fenchol	< LOQ	%						
Borneol	< LOQ	%						
Terpineol	< LOQ	%						
Geraniol	< LOQ	%						
alpha Humulene	< LOQ	%						
beta Caryophyllene	< LOQ	%						
Caryophyllene Oxide	< LOQ	%						
alpha Bisabolol	< LOQ	%						
Camphene	< LOQ	%						
beta Pinene	< LOQ	%						
Ocimene	< LOQ	%						
Sabinene	< LOQ	%						
Camphor	< LOQ	%						
Isoborneol	< LOQ	%						
Menthol	< LOQ	%						
alpha Cedrene	< LOQ	%						
Nerolidol	< LOQ	%						
R-(+)-Pulegone	< LOQ	%						
Eucalyptol	< LOQ	%						
p-Cymene	< LOQ	%						
(-)-Isopulegol	< LOQ	%						
Geranyl Acetate	< LOQ	%						
Guaiol	< LOQ	%						
Valencene	< LOQ	%						
Phytol	0.140	%						
Citronellol	< LOQ	%						
gamma-Terpinene	< LOQ	%						



Brian Weigel
Lab Director

These results relate only to the sample included on this report. The report may not be reproduced except in full, without the written permission of SC Laboratories. Samples tested in accordance with Oregon Administrative Rules, TNI 2009 Standard and SC Laboratories quality assurance plan unless otherwise noted.

Quality Control

Terpene Analysis (Continued)

Batch: B180637 - Potency/Terpenes (Continued)

Duplicate(B180637-DUP1)		Extracted - 08/03/18 15:30 Analyzed - 08/03/18 17:08						
Analyte	Result	Units	Spike Level	Source Result	%REC	%REC Limits	RPD	RPD Limit
alpha Pinene	0.291	%		0.287			1.50	20
Myrcene	0.769	%		0.749			2.54	20
alpha Phellandrene	< LOQ	%		< LOQ				20
3-Carene	< LOQ	%		< LOQ				20
alpha Terpinene	< LOQ	%		< LOQ				20
Limonene	0.310	%		0.309			0.0865	20
Terpinolene	0.420	%		0.400			4.98	20
Linalool	< LOQ	%		< LOQ				20
Fenchol	< LOQ	%		< LOQ				20
Borneol	< LOQ	%		< LOQ				20
Terpineol	< LOQ	%		< LOQ				20
Geraniol	< LOQ	%		< LOQ				20
alpha Humulene	0.622	%		0.625			0.402	20
beta Caryophyllene	1.729	%		1.721			0.459	20
Caryophyllene Oxide	< LOQ	%		< LOQ				20
alpha Bisabolol	0.354	%		0.342			3.44	20
Camphene	< LOQ	%		< LOQ				20
beta Pinene	< LOQ	%		< LOQ				20
Ocimene	< LOQ	%		< LOQ				20
Sabinene	< LOQ	%		< LOQ				20
Camphor	< LOQ	%		< LOQ				20
Isoborneol	< LOQ	%		< LOQ				20
Menthol	< LOQ	%		< LOQ				20
alpha Cedrene	< LOQ	%		< LOQ				20
Nerolidol	< LOQ	%		< LOQ				20
R-(+)-Pulegone	< LOQ	%		< LOQ				20
Eucalyptol	< LOQ	%		< LOQ				20
p-Cymene	< LOQ	%		< LOQ				20
(-)-Isopulegol	< LOQ	%		< LOQ				20
Geranyl Acetate	< LOQ	%		< LOQ				20
Guaiol	0.358	%		0.355			0.890	20
Valencene	0.193	%		0.196			1.69	20
Phytol	0.699	%		0.670			4.25	20
Citronellol	< LOQ	%		< LOQ				20
gamma-Terpinene	< LOQ	%		< LOQ				20



Brian Weigel
 Lab Director

These results relate only to the sample included on this report. The report may not be reproduced except in full, without the written permission of SC Laboratories. Samples tested in accordance with Oregon Administrative Rules, TNI 2009 Standard and SC Laboratories quality assurance plan unless otherwise noted.



**OREGON LIQUOR CONTROL COMMISSION
CANNABIS TRANSPORTATION MANIFEST**



18H0005

All sales transactions are to be completed prior to transportation of any CANNABIS. The receiving entity may reject product delivered, but amount delivered must be limited to amount agreed upon in prior sales transaction.

Manifest #:	0000881001	Date Created:	8/2/2018 10:32 AM
Originating Entity:	OM Extracts	For OLCC Use Only	
Originating License Number:	030-10051970949		
Address of Originating Entity:	500 Industrial Circle, Units E, F, G, and H White City, OR 97503		
Phone No. of Originating Entity:	503-888-3289		
Contact Phone No. for Inquiries:	503-688-3289		
Destination # 1:	SC Laboratories	Destination Phone No.:	707-339-0050
Destination License Number:	010 1004748743D	Date and Approximate Time of Departure:	8/2/2018 10:29 AM
Address of Destination:	15865 SW 74th Avenue Ste 110 Tigard, OR 97224	Date and Approximate Time of Arrival:	8/2/2018 6:00 PM
		Date/Time Received:	8-2-18 4:57 PM
		Notes: details for extenuating circumstances (e.g., road closure, flat tire, etc.)	
Route to be Traveled: Highway I-5 to Tigard, OR 15865 SW 74th Ave Tigard OR 97224			
Name of Person Transporting:	Joel Glimpse	Handler Permit No. of Driver:	102682
State Driver's License No.:	9474950	Signature of Person Transporting:	
Make, Model, License Plate No.:	scion XB 175 JLS		
Package Label	Harvest Name	Item Name	Weight/Quantity
1A4010300014ADD000004482 Status: Shipped	css 12/2, YUMC1019, YUMCWF1012, YUMCWF1023, YUMCWF1106	CBD Yummy CO2 Oil (Extracts)	Shp: 12.8100 g
1A4010300014ADD000004483 Status: Shipped	Cactus 11/6, CH 10/12, cm 10/19, CNC Cookies n Cream 10/12, css 11/6, LM 10/13, n17 11/6, PTS 10/19, SC 10/11, ShiSha 10/12, TW 11/27, v17 10/19	Cactus CO2 FECO (Extracts)	Shp: 12.8100 g
1A4010300014ADD000004485 Status: Shipped	HT 10/13	Harle Tsu CO2 FECO (Extracts)	Shp: 12.8000 lb
PRODUCT REJECTION (if only a portion of shipment is rejected, circle that portion above)			
Name of Person Receiving or Rejecting Product:	MIB		
I confirm that the contents of this shipment match weight records entered above, and I agree to take custody of those portions of this shipment <i>not</i> circled above. Those portions circled were returned to the individual delivering this shipment.			
Signature:			Date: 8-2-18
Signature of individual taking receipt of rejected portion of this shipment:			

Observations and Abnormalities:							
---------------------------------	--	--	--	--	--	--	--


Container Type	METRC Harvest/Processing Lot ID #:				Product Type	Client Sample Name	Product Date	Batch Size (g)
Pyrex	180801CA				Concentrate	Cactus FECO		2724
METRC Batch ID	Product Temp (°C)	Humidity (%)	# of Containers	Sample Media	# Zones	# of Inc.	1° Sample (g)	Sample Name
4421	80.9		1	Vial	4	8	1	Cactus FECO Primary
Lab Sample ID	Container ID		Increment Zone	Sampling Media Wt. (g)	Wt. Inc+Media (g)	Increment Weight (g)	Sample METRC ID#	
18HOM2-05	Cactus FECO-1		A1	10.08	10.88	0.8	1A4010300014ADD000004483	
18HOM2-05	Cactus FECO-1		A1	10.88	11.68	0.8	1A4010300014ADD000004483	
18HOM2-05	Cactus FECO-1		A1	11.68	12.48	0.8	1A4010300014ADD000004483	
18HOM2-05	Cactus FECO-1		A2	12.48	13.28	0.8	1A4010300014ADD000004483	
18HOM2-05	Cactus FECO-1		A2	13.28	14.08	0.8	1A4010300014ADD000004483	
18HOM2-05	Cactus FECO-1		A3	14.08	14.88	0.8	1A4010300014ADD000004483	
18HOM2-05	Cactus FECO-1		A4	14.88	15.68	0.8	1A4010300014ADD000004483	
18HOM2-05	Cactus FECO-1		A4	15.68	16.48	0.8	1A4010300014ADD000004483	
					Total Primary Mass = 6.4		Primary + Duplicate Mass = 0 g	
Observations and Abnormalities:		Batch #	Marks/Labels	Cont. Types/Sizes	Uniform	Plant Colors	Shape and Size	Sampling Plan

METRC Batch ID	Product Temp (°C)	Humidity (%)	# of Containers	Sample Media	# Zones	# of Inc.	1° Sample (g)	Sample Name
4421	80.9		1	Vial	4	8	1	Cactus FECO Duplicate
Lab Sample ID	Container ID		Increment Zone	Sampling Media Wt. (g)	Wt. Inc+Media (g)	Increment Weight (g)	Sample METRC ID#	
18HOM2-06	Cactus FECO-1		A1	9.98	10.78	0.8	1A4010300014ADD000004483	
18HOM2-06	Cactus FECO-1		A2	10.78	11.58	0.8	1A4010300014ADD000004483	
18HOM2-06	Cactus FECO-1		A2	11.58	12.38	0.8	1A4010300014ADD000004483	
18HOM2-06	Cactus FECO-1		A3	12.38	13.18	0.8	1A4010300014ADD000004483	
18HOM2-06	Cactus FECO-1		A3	13.18	13.98	0.8	1A4010300014ADD000004483	
18HOM2-06	Cactus FECO-1		A3	13.98	14.78	0.8	1A4010300014ADD000004483	
18HOM2-06	Cactus FECO-1		A4	14.78	15.58	0.8	1A4010300014ADD000004483	
18HOM2-06	Cactus FECO-1		A4	15.58	16.39	0.81	1A4010300014ADD000004483	
					Total Duplicate Mass = 6.41		Primary + Duplicate Mass = 0 g	

Observations and Abnormalities:	Batch #	Marks/Labels	Cont. Types/Sizes	Uniform	Plant Colors	Shape and Size	Sampling Plan

CHAIN OF CUSTODY

SC Laboratories Oregon LLC
 15865 SW 74th Avenue, Ste 110
 Tigard OR, 97224
 (503) 272-8830
 ORELAP ID # 4133
www.scilabs.com

Client	500 Industrial wy	OM Ext	18HOM2	1/1	18H0005	
Address	500 Industrial wy	500 Industrial wy	18HOM2	18HOM2		
Date Sampled	8/2/18	10051970949	Received By	JKM / M15	8/2/18	Sample Type Legend
OLCC License #	Processor	Processor	Received Date	Joel Scott		U - Usable Marijuana
OLCC License Type	Email	Name of Sampler	Counter	Joel		C - Concentrate
Phone	203-837-7495	Transfer Manifest #	Place where Sampled	BB1001		P - Product
Sampler OLCC License #	010-1004748743D			500 Industrial wy		O - Other

Sample Name	Time	METRC Label	Unique Batch Number	SC Labs LIMS ID	Sample Type	Total Sample Mass	# of Increments	TESTS REQUESTED					Sample Specific Notes	
								Polency	Water Activity	Moisture Content	Pesticide	Residual Solvent		Terpene
CBD YUMMY Primary	9:36	1A4010300014ADD000004482	CBD YUMMY	18HOM2-01	C	6.41	8	X				X	X	
CBD YUMMY Duplicate	9:38	1A4010300014ADD000004482	CBD YUMMY	18HOM2-02	C	6.4	8	X				X	X	
Harle Tsu FECCO Primary	9:39	1A4010300014ADD000004485	Harle Tsu FECCO	18HOM2-03	C	6.4	8	X				X	X	
Harle Tsu FECCO Duplicate	9:41	1A4010300014ADD000004485	Harle Tsu FECCO	18HOM2-04	C	6.4	8	X				X	X	
Cactus FECCO Primary	10:00	1A4010300014ADD000004483	Cactus FECCO	18HOM2-05	C	6.4	8	X				X	X	
Cactus FECCO Duplicate	10:06	1A4010300014ADD000004483	Cactus FECCO	18HOM2-06	C	6.41	8	X				X	X	

Notes/Special Considerations: Opt OUT of Sample Duplicate Yes No

Samples Relinquished Print Name: <u>Samuel Blissett</u> Date: <u>8/2/18</u> Representative of: <u>OLCC Extracts</u> Signature: <u>[Signature]</u> Time: <u>16:30 AM</u>	Samples Received Print Name: <u>Joel</u> Date: <u>8/2/18</u> Representative of: <u>SC Labs</u> Signature: <u>[Signature]</u> Time: <u>10:38</u>
Samples Relinquished Print Name: <u>[Signature]</u> Date: <u>[Signature]</u> Representative of: <u>SC Labs</u> Signature: <u>[Signature]</u> Time: <u>4:44</u>	Samples Received Print Name: <u>[Signature]</u> Date: <u>[Signature]</u> Representative of: <u>[Signature]</u> Signature: <u>[Signature]</u> Time: <u>[Signature]</u>