

Sample Name: **Sour Diesel Primary**
 Tested for: **OM Extracts**
Compliance Extract

Laboratory ID: 19D0121-07

Matrix: Extracts and Concentrates

Sample Metrc ID: 1A4010300014ADD000012218

Lot # 190320 - SD FECCO

License: 10051970949

Batch RFID: 1A4010300014ADD000012209

Date Sampled: 04/23/19 14:36

Batch Size: 1399 (g)

Date Accepted: 04/23/19



Potency Analysis

Date Extracted: 04/24/19

Analysis Method/SOP: Potency

Date Analyzed: 04/25/19

* - ORELAP certified analyte

Cannabinoids	% weight	mg/g	LOQ (%)	Cannabinoids Profile																
Total THC ((THCA*0.877)+d9)	44.87	448.7	0.08	<table border="1"> <tr><td>THC</td><td>40.22</td></tr> <tr><td>THCA</td><td>5.31</td></tr> <tr><td>CBN</td><td>0.27</td></tr> <tr><td>CBG</td><td>1.03</td></tr> <tr><td>CBGA</td><td>0.47</td></tr> <tr><td>CBC</td><td>0.52</td></tr> <tr><td>THCV</td><td>0.34</td></tr> <tr><td>Total:</td><td>48.14</td></tr> </table>	THC	40.22	THCA	5.31	CBN	0.27	CBG	1.03	CBGA	0.47	CBC	0.52	THCV	0.34	Total:	48.14
THC	40.22																			
THCA	5.31																			
CBN	0.27																			
CBG	1.03																			
CBGA	0.47																			
CBC	0.52																			
THCV	0.34																			
Total:	48.14																			
Total CBD ((CBDA*0.877)+CBD)	< LOQ	< LOQ	0.08																	
d9-THC (d9-Tetrahydrocannabinol)*	40.22	402.2	0.08																	
d8-THC (d8-Tetrahydrocannabinol)*	< LOQ	< LOQ	0.10																	
THCA (d9-Tetrahydrocannabinolic Acid)*	5.31	53.1	0.16																	
CBD (Cannabidiol)*	< LOQ	< LOQ	0.08																	
CBDA (Cannabidiolic Acid)*	< LOQ	< LOQ	0.16																	
CBN (Cannabinol)*	0.27	2.7	0.08																	
CBG (Cannabigerol)*	1.03	10.3	0.10																	
CBGA (Cannabigerolic Acid)	0.47	4.7	0.10																	
CBDV (Cannabidivarin)*	< LOQ	< LOQ	0.10																	
CBDVA (Cannabidivarinic Acid)	< LOQ	< LOQ	0.10																	
CBC (Cannabichromene)*	0.52	5.2	0.10																	
THCV (Tetrahydrocannabivarin)	0.34	3.4	0.10																	
Total Cannabinoids	48.14	481.4	0.08																	

<LOQ - Results below the Limit of Quantitation - Compound not detected



Brian Weigel
Lab Director

These results relate only to the sample included on this report. The report may not be reproduced except in full, without the written permission of SC Laboratories. Samples tested in accordance with Oregon Administrative Rules, TNI 2009 Standard and SC Laboratories quality assurance plan unless otherwise noted.

Sample Name: **Sour Diesel Duplicate**
 Tested for: **OM Extracts**
Compliance Extract

Laboratory ID: 19D0121-08

Matrix: Extracts and Concentrates

Sample Metrc ID: 1A4010300014ADD000012218

Lot # 190320 - SD FECCO

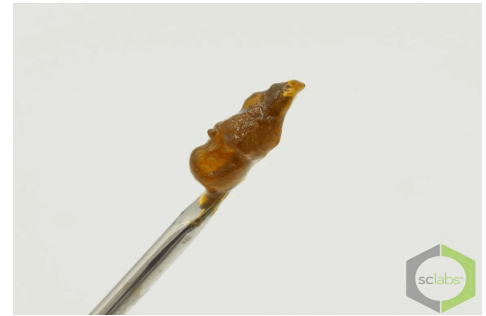
License: 10051970949

Batch RFID: 1A4010300014ADD000012209

Date Sampled: 04/23/19 14:41

Batch Size: 1399 (g)

Date Accepted: 04/23/19



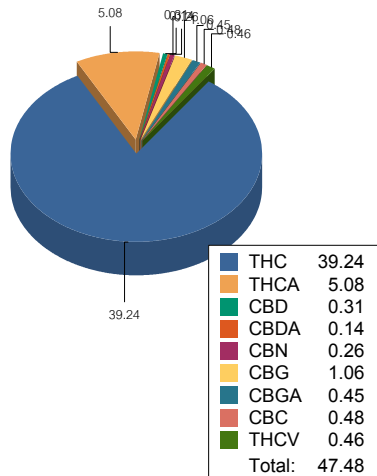
Potency Analysis

Date Extracted: 04/24/19

Analysis Method/SOP: Potency

Date Analyzed: 04/25/19

* - ORELAP certified analyte

Cannabinoids	% weight	mg/g	LOQ (%)	Cannabinoids Profile
Total THC ((THCA*0.877)+d9)	43.69	436.9	0.07	
Total CBD ((CBDA*0.877)+CBD)	0.31	3.1	0.07	
d9-THC (d9-Tetrahydrocannabinol)*	39.24	392.4	0.07	
d8-THC (d8-Tetrahydrocannabinol)*	< LOQ	< LOQ	0.09	
THCA (d9-Tetrahydrocannabinolic Acid)*	5.08	50.8	0.14	
CBD (Cannabidiol)*	0.31	3.1	0.07	
CBDA (Cannabidiolic Acid)*	0.14	1.4	0.14	
CBN (Cannabinol)*	0.26	2.6	0.07	
CBG (Cannabigerol)*	1.06	10.6	0.09	
CBGA (Cannabigerolic Acid)	0.45	4.5	0.09	
CBDV (Cannabidivarin)*	< LOQ	< LOQ	0.09	
CBDVA (Cannabidivarinic Acid)	< LOQ	< LOQ	0.09	
CBC (Cannabichromene)*	0.48	4.8	0.09	
THCV (Tetrahydrocannabivarin)	0.46	4.6	0.09	
Total Cannabinoids	47.34	473.4	0.07	

<LOQ - Results below the Limit of Quantitation - Compound not detected

Sample Name: **Sour Diesel**

Sample Metrc ID: 1A4010300014ADD000012218

	Primary Result %	Duplicate Result %	Average %	% RPD	Pass/Fail (<20%RPD)
Total THC ((THCA*0.877)+d9)	44.87	43.69	44.28	2.66	PASS
Total CBD ((CBDA*0.877)+CBD)	< LOQ	0.31	NA	NA	NA



Brian Weigel
Lab Director

These results relate only to the sample included on this report. The report may not be reproduced except in full, without the written permission of SC Laboratories. Samples tested in accordance with Oregon Administrative Rules, TNI 2009 Standard and SC Laboratories quality assurance plan unless otherwise noted.

Sample Name: Sour Diesel Primary	License: 10051970949
Tested for: OM Extracts Compliance Extract	Date Sampled: 04/23/19 14:36
Laboratory ID: 19D0121-07	Date Accepted: 04/23/19
Matrix: Extracts and Concentrates	Sample Metrc ID: 1A4010300014ADD000012218
Lot # 190320 - SD FECO	Batch RFID: 1A4010300014ADD000012209
	Batch Size: 1399 (g)

Terpene Analysis

Date Extracted: 04/24/19 Analysis Method/SOP: Terpenes
 Date Analyzed: 04/24/19

Analyte	Result (%)	LOQ	Analyte	Result	LOQ
alpha Pinene	0.687	0.095	Myrcene	0.644	0.095
alpha Phellandrene	< LOQ	0.095	3-Carene	< LOQ	0.095
alpha Terpinene	< LOQ	0.095	Limonene	3.743	0.095
Terpinolene	0.099	0.095	Linalool	0.562	0.095
Fenchol	0.406	0.095	Borneol	< LOQ	0.095
Terpineol	0.230	0.095	Geraniol	< LOQ	0.095
alpha Humulene	1.692	0.095	beta Caryophyllene	3.902	0.095
Caryophyllene Oxide	< LOQ	0.095	alpha Bisabolol	1.101	0.095
Camphene	0.131	0.095	beta Pinene	0.340	0.095
Ocimene	< LOQ	0.095	Sabinene	< LOQ	0.095
Camphor	< LOQ	0.095	Isoborneol	< LOQ	0.095
Menthol	< LOQ	0.095	alpha Cedrene	< LOQ	0.095
Nerolidol	0.884	0.095	R-(+)-Pulegone	< LOQ	0.095
Eucalyptol	< LOQ	0.095	p-Cymene	< LOQ	0.095
(-)-Isopulegol	< LOQ	0.095	Geranyl Acetate	0.119	0.095
Guaiol	< LOQ	0.095	Valencene	0.108	0.095
Phytol	0.193	0.095	Citronellol	< LOQ	0.095
gamma-Terpinene	< LOQ	0.095			
Total Terpenes				14.84 %	

<LOQ - Results below the Limit of Quantitation - Compound not detected
 Terpene Analysis is not ORELAP Accredited.

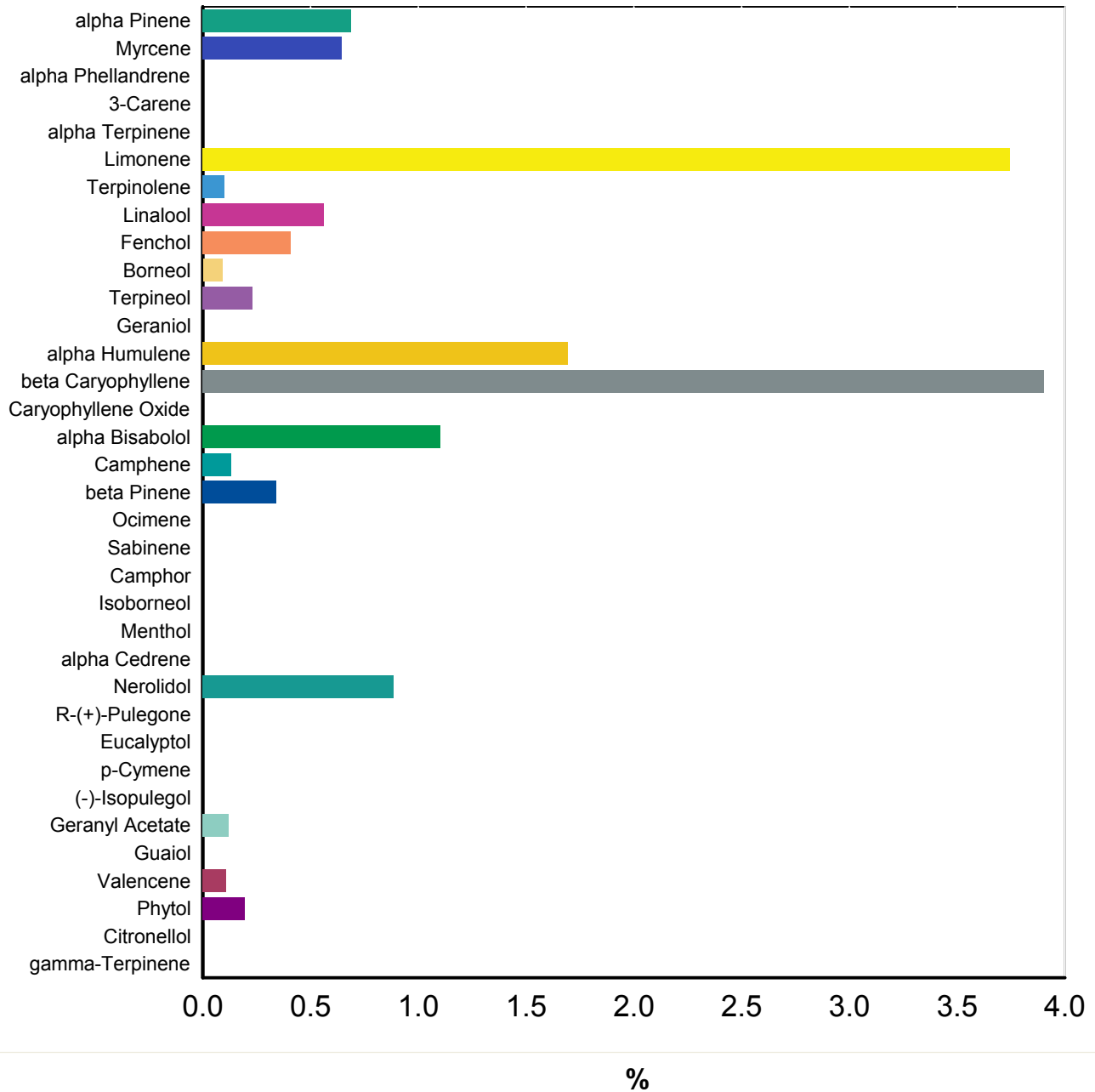


Brian Weigel
 Lab Director

These results relate only to the sample included on this report. The report may not be reproduced except in full, without the written permission of SC Laboratories. Samples tested in accordance with Oregon Administrative Rules, TNI 2009 Standard and SC Laboratories quality assurance plan unless otherwise noted.

Sample Name: Sour Diesel Primary	License: 10051970949
Tested for: OM Extracts	Date Sampled: 04/23/19 14:36
Compliance Extract	Date Accepted: 04/23/19 18:13
Laboratory ID: 19D0121-07 Matrix: Extracts and	Client/Metric ID: 1A4010300014ADD000012218

Terpene Profile



Brian Weigel
 Brian Weigel
 Lab Director

These results relate only to the sample included on this report. The report may not be reproduced except in full, without the written permission of SC Laboratories. Samples tested in accordance with Oregon Administrative Rules, TNI 2009 Standard and SC Laboratories quality assurance plan unless otherwise noted.

Sample Name: **Sour Diesel Primary** License: **10051970949**
 Tested for: **OM Extracts** Date Sampled: **04/23/19 14:36**
Compliance Extract Date Accepted: **04/23/19**

Laboratory ID: **19D0121-07** Sample Metric ID: **1A4010300014ADD000012218**
 Matrix: **Extracts and Concentrates** Batch RFID: **1A4010300014ADD000012209**
 Lot # **190320 - SD FECO** Batch Size: **1399 (g)**

Pesticide Analysis in ppm

Date Extracted: 04/24/19 Analysis Method/SOP: Pesticides
 Date Analyzed: 04/25/19 Results above the action levels are highlighted in red #.

Analyte	Result	Action Level	LOQ	Analyte	Result	Action Level	LOQ
Abamectin	< LOQ	0.5	0.237	Acephate	< LOQ	0.4	0.190
Acequinocyl	< LOQ	2	0.949	Acetamiprid	< LOQ	0.2	0.095
Aldicarb	< LOQ	0.4	0.190	Azoxystrobin	< LOQ	0.2	0.095
Bifenazate	< LOQ	0.2	0.095	Bifenthrin	< LOQ	0.2	0.095
Boscalid	< LOQ	0.4	0.190	Carbaryl	< LOQ	0.2	0.095
Carbofuran	< LOQ	0.2	0.095	Chlorantraniliprole	< LOQ	0.2	0.095
Chlorfenapyr	< LOQ	1	0.475	Chlorpyrifos	< LOQ	0.2	0.095
Clofentezine	< LOQ	0.2	0.095	Cyfluthrin	< LOQ	1	0.475
Cypermethrin	< LOQ	1	0.475	Daminozide	< LOQ	1	0.475
DDVP (Dichlorvos)	< LOQ	1	0.475	Diazinon	< LOQ	0.2	0.095
Dimethoate	< LOQ	0.2	0.095	Ethoprophos	< LOQ	0.2	0.095
Etofenprox	< LOQ	0.4	0.190	Etoxazole	< LOQ	0.2	0.095
Fenoxycarb	< LOQ	0.2	0.095	Fenpyroximate	< LOQ	0.4	0.190
Fipronil	< LOQ	0.4	0.190	Fonicamid	< LOQ	1	0.475
Fludioxonil	< LOQ	0.4	0.190	Hexythiazox	< LOQ	1	0.475
Imazalil	< LOQ	0.2	0.095	Imidacloprid	< LOQ	0.4	0.190
Kresoxim-methyl	< LOQ	0.4	0.190	Malathion	< LOQ	0.2	0.095
Metalaxyl	< LOQ	0.2	0.095	Methiocarb	< LOQ	0.2	0.095
Methomyl	< LOQ	0.4	0.190	Methyl parathion	< LOQ	0.2	0.095
MGK-264	< LOQ	0.2	0.095	Myclobutanil	< LOQ	0.2	0.095
Naled	< LOQ	0.5	0.237	Oxamyl	< LOQ	1	0.475
Paclobutrazol	< LOQ	0.4	0.190	Permethrins (total)	< LOQ	0.2	0.095
Phosmet	< LOQ	0.2	0.095	Piperonyl butoxide	< LOQ	2	0.475
Prallethrin	< LOQ	0.2	0.095	Propiconazole	< LOQ	0.4	0.190
Propoxur	< LOQ	0.2	0.095	Pyrethrins (total)	< LOQ	1	0.475
Pyridaben	< LOQ	0.2	0.095	Spinosad	< LOQ	0.2	0.095
Spiromesifen	< LOQ	0.2	0.095	Spirotetramat	< LOQ	0.2	0.095
Spiroxamine	< LOQ	0.4	0.190	Tebuconazole	< LOQ	0.4	0.190
Thiacloprid	< LOQ	0.2	0.095	Thiamethoxam	< LOQ	0.2	0.095
Trifloxystrobin	< LOQ	0.2	0.095				

<LOQ - Results below the Limit of Quantitation - Compound not detected



Brian Weigel
Lab Director

These results relate only to the sample included on this report. The report may not be reproduced except in full, without the written permission of SC Laboratories. Samples tested in accordance with Oregon Administrative Rules, TNI 2009 Standard and SC Laboratories quality assurance plan unless otherwise noted.

Sample Name: **Sour Diesel Duplicate** License: **10051970949**
 Tested for: **OM Extracts** Date Sampled: **04/23/19 14:41**
Compliance Extract Date Accepted: **04/23/19**

Laboratory ID: **19D0121-08** Sample Metrc ID: **1A4010300014ADD000012218**
 Matrix: **Extracts and Concentrates** Batch RFID: **1A4010300014ADD000012209**
 Lot # **190320 - SD FECO** Batch Size: **1399 (g)**

Pesticide Analysis in ppm

Date Extracted: 04/24/19 Analysis Method/SOP: Pesticides
 Date Analyzed: 04/25/19 Results above the action levels are highlighted in red #.

Analyte	Result	Action Level	LOQ	Analyte	Result	Action Level	LOQ
Abamectin	< LOQ	0.5	0.249	Acephate	< LOQ	0.4	0.199
Acequinocyl	< LOQ	2	0.996	Acetamiprid	< LOQ	0.2	0.100
Aldicarb	< LOQ	0.4	0.199	Azoxystrobin	< LOQ	0.2	0.100
Bifenazate	< LOQ	0.2	0.100	Bifenthrin	< LOQ	0.2	0.100
Boscalid	< LOQ	0.4	0.199	Carbaryl	< LOQ	0.2	0.100
Carbofuran	< LOQ	0.2	0.100	Chlorantraniliprole	< LOQ	0.2	0.100
Chlorfenapyr	< LOQ	1	0.498	Chlorpyrifos	< LOQ	0.2	0.100
Clofentezine	< LOQ	0.2	0.100	Cyfluthrin	< LOQ	1	0.498
Cypermethrin	< LOQ	1	0.498	Daminozide	< LOQ	1	0.498
DDVP (Dichlorvos)	< LOQ	1	0.498	Diazinon	< LOQ	0.2	0.100
Dimethoate	< LOQ	0.2	0.100	Ethoprophos	< LOQ	0.2	0.100
Etofenprox	< LOQ	0.4	0.199	Etoxazole	< LOQ	0.2	0.100
Fenoxycarb	< LOQ	0.2	0.100	Fenpyroximate	< LOQ	0.4	0.199
Fipronil	< LOQ	0.4	0.199	Fonicamid	< LOQ	1	0.498
Fludioxonil	< LOQ	0.4	0.199	Hexythiazox	< LOQ	1	0.498
Imazalil	< LOQ	0.2	0.100	Imidacloprid	< LOQ	0.4	0.199
Kresoxim-methyl	< LOQ	0.4	0.199	Malathion	< LOQ	0.2	0.100
Metalaxyl	< LOQ	0.2	0.100	Methiocarb	< LOQ	0.2	0.100
Methomyl	< LOQ	0.4	0.199	Methyl parathion	< LOQ	0.2	0.100
MGK-264	< LOQ	0.2	0.100	Myclobutanil	< LOQ	0.2	0.100
Naled	< LOQ	0.5	0.249	Oxamyl	< LOQ	1	0.498
Paclobutrazol	< LOQ	0.4	0.199	Permethrins (total)	< LOQ	0.2	0.100
Phosmet	< LOQ	0.2	0.100	Piperonyl butoxide	< LOQ	2	0.498
Prallethrin	< LOQ	0.2	0.100	Propiconazole	< LOQ	0.4	0.199
Propoxur	< LOQ	0.2	0.100	Pyrethrins (total)	< LOQ	1	0.498
Pyridaben	< LOQ	0.2	0.100	Spinosad	< LOQ	0.2	0.100
Spiromesifen	< LOQ	0.2	0.100	Spirotetramat	< LOQ	0.2	0.100
Spiroxamine	< LOQ	0.4	0.199	Tebuconazole	< LOQ	0.4	0.199
Thiacloprid	< LOQ	0.2	0.100	Thiamethoxam	< LOQ	0.2	0.100
Trifloxystrobin	< LOQ	0.2	0.100				

<LOQ - Results below the Limit of Quantitation - Compound not detected



Brian Weigel
Lab Director

These results relate only to the sample included on this report. The report may not be reproduced except in full, without the written permission of SC Laboratories. Samples tested in accordance with Oregon Administrative Rules, TNI 2009 Standard and SC Laboratories quality assurance plan unless otherwise noted.

Sample Name: Sour Diesel Primary	License: 10051970949
Tested for: OM Extracts	Date Sampled: 04/23/19 14:36
Compliance Extract	Date Accepted: 04/23/19
Laboratory ID: 19D0121-07	Sample Metric ID: 1A4010300014ADD000012218
Matrix: Extracts and Concentrates	Batch RFID: 1A4010300014ADD000012209
Lot # 190320 - SD FECO	Batch Size: 1399 (g)

Residual Solvents

Solvent	Results in ug/g	Action Level	LOQ	Date Extracted: 04/24/19
1,4-Dioxane	< LOQ	380	191	Date Analyzed: 04/24/19
2-Butanol	< LOQ	5000	2510	Analysis Method/SOP: RST
2-Ethoxyethanol	< LOQ	160	80.3	
2-Propanol (IPA)	< LOQ	5000	2510	
Acetone	< LOQ	5000	2510	
Acetonitrile	< LOQ	400	206	
Benzene	< LOQ	2	1.00	
Butanes	< LOQ	5000	2510	
Cyclohexane	< LOQ	3880	1950	
Dichloromethane (methylene chloride)	< LOQ	600	301	
Ethyl acetate	< LOQ	5000	2510	
Ethyl ether	< LOQ	5000	2510	
Ethylbenzene	< LOQ	2170	1090	
Ethylene glycol	< LOQ	620	311	
Ethylene oxide	< LOQ	50	25.1	
Heptane	< LOQ	5000	2510	
Hexanes	< LOQ	290	146	
Isopropyl acetate	< LOQ	5000	2510	
Isopropylbenzene (cumene)	< LOQ	70	35.1	
Methanol	< LOQ	3000	1510	
Pentanes	< LOQ	5000	2510	
Propane	< LOQ	5000	2510	
Tetrahydrofuran	< LOQ	720	361	
Toluene	< LOQ	890	447	
Xylenes	< LOQ	2170	1090	

<LOQ - Results below the Limit of Quantitation - Compound not detected
 Results above the Action Level fail state testing requirements and will be highlighted **Red #**.



Brian Weigel
 Lab Director

These results relate only to the sample included on this report. The report may not be reproduced except in full, without the written permission of SC Laboratories. Samples tested in accordance with Oregon Administrative Rules, TNI 2009 Standard and SC Laboratories quality assurance plan unless otherwise noted.

Sample Name: **Sour Diesel Duplicate**
 Tested for: **OM Extracts**
Compliance Extract

License: **10051970949**
 Date Sampled: **04/23/19 14:41**
 Date Accepted: **04/23/19**

Laboratory ID: **19D0121-08**

Sample Metric ID: **1A4010300014ADD000012218**

Matrix: **Extracts and Concentrates**

Batch RFID: **1A4010300014ADD000012209**

Lot # **190320 - SD FECO**

Batch Size: **1399 (g)**

Residual Solvents

Solvent	Results in ug/g	Action Level	LOQ
1,4-Dioxane	< LOQ	380	196
2-Butanol	< LOQ	5000	2580
2-Ethoxyethanol	< LOQ	160	82.5
2-Propanol (IPA)	< LOQ	5000	2580
Acetone	< LOQ	5000	2580
Acetonitrile	< LOQ	400	211
Benzene	< LOQ	2	1.03
Butanes	< LOQ	5000	2580
Cyclohexane	< LOQ	3880	2000
Dichloromethane (methylene chloride)	< LOQ	600	309
Ethyl acetate	< LOQ	5000	2580
Ethyl ether	< LOQ	5000	2580
Ethylbenzene	< LOQ	2170	1120
Ethylene glycol	< LOQ	620	320
Ethylene oxide	< LOQ	50	25.8
Heptane	< LOQ	5000	2580
Hexanes	< LOQ	290	149
Isopropyl acetate	< LOQ	5000	2580
Isopropylbenzene (cumene)	< LOQ	70	36.1
Methanol	< LOQ	3000	1550
Pentanes	< LOQ	5000	2580
Propane	< LOQ	5000	2580
Tetrahydrofuran	< LOQ	720	371
Toluene	< LOQ	890	459
Xylenes	< LOQ	2170	1120

Date Extracted: 04/24/19
 Date Analyzed: 04/24/19
 Analysis Method/SOP: RST

<LOQ - Results below the Limit of Quantitation - Compound not detected
 Results above the Action Level fail state testing requirements and will be highlighted **Red #**.



Brian Weigel
 Lab Director

These results relate only to the sample included on this report. The report may not be reproduced except in full, without the written permission of SC Laboratories. Samples tested in accordance with Oregon Administrative Rules, TNI 2009 Standard and SC Laboratories quality assurance plan unless otherwise noted.

Case Narrative

Residual Solvent - Isopropylbenzene was below normally accepted recovery criteria in the Blank Spike due to isopropylbenzene signal suppression in samples spiked with all target analytes.

Isopropylbenzene was above normally accepted recovery criteria in the Matrix Spike and Matrix Spike Duplicate due to pinene coelution. Analyte was below the reporting limit in all client samples.

Terpenes - Phytol result was above QC criteria in the Method Blank.

Phytol exceeded normally accepted RPD criteria in the Sample Duplicate due to relatively large variations in very small values.

**Quality Control
Potency**

Batch: B190693 - Potency/Terpenes

Blank(B190693-BLK1)			Extracted - 04/24/19 16:11 Analyzed - 04/25/19 13:15					
Analyte	Result	Units	Spike Level	Source Result	%REC	%REC Limits	RPD	RPD Limit
d9-THC (d9-Tetrahydrocannabinol)	< LOQ	%						
d8-THC (d8-Tetrahydrocannabinol)	< LOQ	%						
THCA (d9-Tetrahydrocannabinolic Acid)	< LOQ	%						
CBD (Cannabidiol)	< LOQ	%						
CBDA (Cannabidiolic Acid)	< LOQ	%						
CBN (Cannabinol)	< LOQ	%						
CBG (Cannabigerol)	< LOQ	%						
CBGA (Cannabigerolic Acid)	< LOQ	%						
CBDV (Cannabidivarin)	< LOQ	%						
CBDVA (Cannabidivarinic Acid)	< LOQ	%						
CBC (Cannabichromene)	< LOQ	%						
THCV (Tetrahydrocannabivarin)	< LOQ	%						

Duplicate(B190693-DUP1)			Extracted - 04/24/19 16:11 Analyzed - 04/25/19 13:24					
Analyte	Result	Units	Spike Level	Source Result	%REC	%REC Limits	RPD	RPD Limit
d9-THC (d9-Tetrahydrocannabinol)	77.46	%		73.88			4.73	20
d8-THC (d8-Tetrahydrocannabinol)	< LOQ	%		< LOQ				20
CBD (Cannabidiol)	1.92	%		1.88			1.77	20
CBDA (Cannabidiolic Acid)	< LOQ	%		< LOQ				20
CBN (Cannabinol)	1.60	%		1.55			2.83	20
CBG (Cannabigerol)	2.38	%		2.30			3.11	20
CBGA (Cannabigerolic Acid)	< LOQ	%		< LOQ				20



Brian Weigel
Lab Director

These results relate only to the sample included on this report. The report may not be reproduced except in full, without the written permission of SC Laboratories. Samples tested in accordance with Oregon Administrative Rules, TNI 2009 Standard and SC Laboratories quality assurance plan unless otherwise noted.

Quality Control Potency (Continued)

Batch: B190693 - Potency/Terpenes (Continued)

Duplicate(B190693-DUP1)			Extracted - 04/24/19 16:11 Analyzed - 04/25/19 13:24					
Analyte	Result	Units	Spike Level	Source Result	%REC	%REC Limits	RPD	RPD Limit
CBDV (Cannabidivarin)	< LOQ	%		< LOQ				20
CBDVA (Cannabidivarinic Acid)	< LOQ	%		< LOQ				20
CBC (Cannabichromene)	1.36	%		1.22			10.2	20
THCV (Tetrahydrocannabivarin)	0.63	%		0.60			5.78	20

LCS(B190693-BS1)			Extracted - 04/24/19 16:11 Analyzed - 04/25/19 13:07					
Analyte	Result	Units	Spike Level	Source Result	%REC	%REC Limits	RPD	RPD Limit
d9-THC (d9-Tetrahydrocannabinol)	0.19	%	0.200		95.8	80-120		
CBD (Cannabidiol)	0.22	%	0.200		111	80-120		
CBDA (Cannabidiolic Acid)	0.19	%	0.200		96.6	80-120		
CBN (Cannabinol)	0.20	%	0.200		98.7	80-120		



Brian Weigel
Lab Director

These results relate only to the sample included on this report. The report may not be reproduced except in full, without the written permission of SC Laboratories. Samples tested in accordance with Oregon Administrative Rules, TNI 2009 Standard and SC Laboratories quality assurance plan unless otherwise noted.

Quality Control Pesticide Analysis

Batch: B190692 - Pesticide Prep

Blank(B190692-BLK1)		Extracted - 04/24/19 10:43 Analyzed - 04/24/19 19:16						
Analyte	Result	Units	Spike Level	Source Result	%REC	%REC Limits	RPD	RPD Limit
Abamectin	< LOQ	ppm						
Acephate	< LOQ	ppm						
Acequinocyl	< LOQ	ppm						
Acetamiprid	< LOQ	ppm						
Aldicarb	< LOQ	ppm						
Azoxystrobin	< LOQ	ppm						
Bifenazate	< LOQ	ppm						
Bifenthrin	< LOQ	ppm						
Boscalid	< LOQ	ppm						
Carbaryl	< LOQ	ppm						
Carbofuran	< LOQ	ppm						
Chlorantraniliprole	< LOQ	ppm						
Chlorfenapyr	< LOQ	ppm						
Chlorpyrifos	< LOQ	ppm						
Clofentezine	< LOQ	ppm						
Cyfluthrin	< LOQ	ppm						
Cypermethrin	< LOQ	ppm						
Daminozide	< LOQ	ppm						
DDVP (Dichlorvos)	< LOQ	ppm						
Diazinon	< LOQ	ppm						
Dimethoate	< LOQ	ppm						
Ethoprophos	< LOQ	ppm						
Etofenprox	< LOQ	ppm						
Etoxazole	< LOQ	ppm						
Fenoxycarb	< LOQ	ppm						
Fenpyroximate	< LOQ	ppm						
Fipronil	< LOQ	ppm						
Fonicamid	< LOQ	ppm						
Fludioxonil	< LOQ	ppm						
Hexythiazox	< LOQ	ppm						
Imazalil	< LOQ	ppm						
Imidacloprid	< LOQ	ppm						
Kresoxim-methyl	< LOQ	ppm						
Malathion	< LOQ	ppm						
Metalaxyl	< LOQ	ppm						



Brian Weigel
Lab Director

These results relate only to the sample included on this report. The report may not be reproduced except in full, without the written permission of SC Laboratories. Samples tested in accordance with Oregon Administrative Rules, TNI 2009 Standard and SC Laboratories quality assurance plan unless otherwise noted.

Quality Control

Pesticide Analysis (Continued)

Batch: B190692 - Pesticide Prep (Continued)

Blank(B190692-BLK1)			Extracted - 04/24/19 10:43 Analyzed - 04/24/19 19:16					
Analyte	Result	Units	Spike Level	Source Result	%REC	%REC Limits	RPD	RPD Limit
Methiocarb	< LOQ	ppm						
Methomyl	< LOQ	ppm						
Methyl parathion	< LOQ	ppm						
MGK-264	< LOQ	ppm						
Myclobutanil	< LOQ	ppm						
Naled	< LOQ	ppm						
Oxamyl	< LOQ	ppm						
Pacllobutrazol	< LOQ	ppm						
Permethrins (total)	< LOQ	ppm						
Phosmet	< LOQ	ppm						
Piperonyl butoxide	< LOQ	ppm						
Prallethrin	< LOQ	ppm						
Propiconazole	< LOQ	ppm						
Propoxur	< LOQ	ppm						
Pyrethrins (total)	< LOQ	ppm						
Pyridaben	< LOQ	ppm						
Spinosad	< LOQ	ppm						
Spiromesifen	< LOQ	ppm						
Spirotetramat	< LOQ	ppm						
Spiroxamine	< LOQ	ppm						
Tebuconazole	< LOQ	ppm						
Thiacloprid	< LOQ	ppm						
Thiamethoxam	< LOQ	ppm						
Trifloxystrobin	< LOQ	ppm						

LCS(B190692-BS1)			Extracted - 04/24/19 10:43 Analyzed - 04/24/19 19:32					
Analyte	Result	Units	Spike Level	Source Result	%REC	%REC Limits	RPD	RPD Limit
Abamectin	0.63	ppm	0.980		64.7	15-150		
Acephate	0.84	ppm	1.00		84.4	51-141		
Acequinocyl	0.28	ppm	1.00		28.2	24-84		
Acetamiprid	0.99	ppm	1.00		98.8	50-150		
Aldicarb	0.97	ppm	1.00		97.4	49-146		
Azoxystrobin	0.65	ppm	1.00		65.0	52-136		
Bifenazate	0.69	ppm	1.00		68.9	41-133		
Bifenthrin	0.56	ppm	1.00		56.3	22-130		



Brian Weigel
Lab Director

These results relate only to the sample included on this report. The report may not be reproduced except in full, without the written permission of SC Laboratories. Samples tested in accordance with Oregon Administrative Rules, TNI 2009 Standard and SC Laboratories quality assurance plan unless otherwise noted.

Quality Control Pesticide Analysis (Continued)

Batch: B190692 - Pesticide Prep (Continued)

LCS(B190692-BS1)		Extracted - 04/24/19 10:43 Analyzed - 04/24/19 19:32						
Analyte	Result	Units	Spike Level	Source Result	%REC	%REC Limits	RPD	RPD Limit
Boscalid	0.60	ppm	1.00		59.9	29-144		
Carbaryl	0.78	ppm	1.00		78.0	61-127		
Carbofuran	1.00	ppm	1.00		100	62-136		
Chlorantraniliprole	1.89	ppm	1.00		189	41-150		
Chlorfenapyr	0.53	ppm	1.00		52.5	23-143		
Chlorpyrifos	0.61	ppm	1.00		61.3	29-124		
Clofentezine	0.75	ppm	1.00		75.0	40-127		
Cyfluthrin	0.58	ppm	1.00		58.4	32-147		
Cypermethrin	0.69	ppm	1.00		69.2	21-144		
Daminozide	0.28	ppm	1.00		28.1	15-91		
DDVP (Dichlorvos)	0.87	ppm	1.00		87.0	55-150		
Diazinon	0.80	ppm	1.00		79.6	43-127		
Dimethoate	0.88	ppm	1.00		87.7	62-136		
Ethoprophos	0.76	ppm	1.00		75.6	45-142		
Etofenprox	0.59	ppm	1.00		58.5	24-113		
Etoxazole	0.65	ppm	1.00		65.2	34-121		
Fenoxycarb	0.74	ppm	1.00		73.9	22-150		
Fenpyroximate	0.61	ppm	1.00		60.7	34-144		
Fipronil	0.67	ppm	1.00		67.2	25-149		
Flonicamid	0.77	ppm	1.00		77.5	53-144		
Fludioxonil	0.82	ppm	1.00		82.1	29-132		
Hexythiazox	0.56	ppm	1.00		55.9	22-111		
Imazalil	0.73	ppm	1.00		73.3	48-125		
Imidacloprid	1.01	ppm	1.00		101	41-150		
Kresoxim-methyl	0.89	ppm	1.00		88.8	43-140		
Malathion	0.77	ppm	1.00		77.1	25-148		
Metalaxyl	0.82	ppm	1.00		81.8	50-136		
Methiocarb	0.74	ppm	1.00		73.8	56-132		
Methomyl	0.86	ppm	1.00		85.6	40-150		
Methyl parathion	0.73	ppm	1.00		72.5	15-150		
MGK-264	0.35	ppm	0.630		55.7	32-134		
Myclobutanil	0.71	ppm	1.00		71.1	43-141		
Naled	0.64	ppm	1.00		64.1	15-136		
Oxamyl	0.85	ppm	1.00		85.4	56-133		
Paclobutrazol	0.75	ppm	1.00		74.6	34-143		



Brian Weigel
 Lab Director

These results relate only to the sample included on this report. The report may not be reproduced except in full, without the written permission of SC Laboratories. Samples tested in accordance with Oregon Administrative Rules, TNI 2009 Standard and SC Laboratories quality assurance plan unless otherwise noted.

Quality Control Pesticide Analysis (Continued)

Batch: B190692 - Pesticide Prep (Continued)

LCS(B190692-BS1)		Extracted - 04/24/19 10:43 Analyzed - 04/24/19 19:32						
Analyte	Result	Units	Spike Level	Source Result	%REC	%REC Limits	RPD	RPD Limit
Permethrins (total)	0.49	ppm				31-113		
Phosmet	0.73	ppm	1.00		72.5	53-124		
Piperonyl butoxide	0.63	ppm	1.00		63.4	39-128		
Prallethrin	0.58	ppm	1.00		57.9	43-140		
Propiconazole	0.90	ppm	1.00		90.3	47-124		
Propoxur	1.03	ppm	1.00		103	63-135		
Pyrethrins (total)	0.37	ppm				19-144		
Pyridaben	0.54	ppm	1.00		53.5	31-122		
Spinosad	0.51	ppm	0.820		62.0	24-147		
Spiromesifen	0.66	ppm	1.00		65.7	49-133		
Spirotetramat	0.65	ppm	1.00		64.6	29-150		
Spiroxamine	0.20	ppm	0.550		36.8	15-122		
Tebuconazole	0.85	ppm	1.00		84.8	40-133		
Thiacloprid	0.96	ppm	1.00		95.5	60-143		
Thiamethoxam	0.85	ppm	1.00		85.4	42-146		
Trifloxystrobin	0.88	ppm	1.00		87.9	41-148		

Matrix Spike(B190692-MS1)		Extracted - 04/24/19 10:43 Analyzed - 04/24/19 19:48						
Analyte	Result	Units	Spike Level	Source Result	%REC	%REC Limits	RPD	RPD Limit
Abamectin	1.38	ppm	1.90	< LOQ	72.3	21-150		
Acephate	1.59	ppm	1.94	< LOQ	82.0	48-131		
Acequinocyl	< LOQ	ppm	1.94	< LOQ		16-148		
Acetamiprid	1.77	ppm	1.94	< LOQ	91.3	50-145		
Aldicarb	1.67	ppm	1.94	< LOQ	86.1	53-133		
Azoxystrobin	1.29	ppm	1.94	< LOQ	66.3	35-147		
Bifenazate	1.40	ppm	1.94	< LOQ	71.8	43-143		
Bifenthrin	0.87	ppm	1.94	< LOQ	44.8	16-107		
Boscalid	1.31	ppm	1.94	< LOQ	67.5	42-140		
Carbaryl	1.57	ppm	1.94	< LOQ	80.9	71-113		
Carbofuran	1.77	ppm	1.94	< LOQ	91.0	73-118		
Chlorantraniliprole	3.78	ppm	1.94	< LOQ	194	45-136		
Chlorfenapyr	1.65	ppm	1.94	< LOQ	85.1	15-150		
Chlorpyrifos	0.78	ppm	1.94	< LOQ	40.2	24-125		
Clofentezine	1.59	ppm	1.94	< LOQ	82.0	38-118		
Cyfluthrin	1.34	ppm	1.94	< LOQ	69.0	23-139		



Brian Weigel
Lab Director

These results relate only to the sample included on this report. The report may not be reproduced except in full, without the written permission of SC Laboratories. Samples tested in accordance with Oregon Administrative Rules, TNI 2009 Standard and SC Laboratories quality assurance plan unless otherwise noted.

Quality Control Pesticide Analysis (Continued)

Batch: B190692 - Pesticide Prep (Continued)

Matrix Spike(B190692-MS1)			Extracted - 04/24/19 10:43 Analyzed - 04/24/19 19:48					
Analyte	Result	Units	Spike Level	Source Result	%REC	%REC Limits	RPD	RPD Limit
Cypermethrin	1.15	ppm	1.94	< LOQ	59.2	38-150		
Daminozide	1.21	ppm	1.94	< LOQ	62.5	15-150		
DDVP (Dichlorvos)	1.57	ppm	1.94	< LOQ	80.8	64-124		
Diazinon	1.69	ppm	1.94	< LOQ	86.8	50-123		
Dimethoate	1.66	ppm	1.94	< LOQ	85.3	69-116		
Ethoprophos	1.56	ppm	1.94	< LOQ	80.5	39-146		
Etofenprox	1.05	ppm	1.94	< LOQ	53.9	31-117		
Etoxazole	1.35	ppm	1.94	< LOQ	69.5	35-136		
Fenoxycarb	1.52	ppm	1.94	< LOQ	78.1	23-150		
Fenpyroximate	1.51	ppm	1.94	< LOQ	77.8	30-143		
Fipronil	1.07	ppm	1.94	< LOQ	55.0	15-150		
Flonicamid	1.46	ppm	1.94	< LOQ	74.9	50-131		
Fludioxonil	1.78	ppm	1.94	< LOQ	91.6	44-150		
Hexythiazox	1.34	ppm	1.94	< LOQ	69.1	34-144		
Imazalil	1.50	ppm	1.94	< LOQ	77.4	54-124		
Imidacloprid	1.80	ppm	1.94	< LOQ	92.6	39-150		
Kresoxim-methyl	1.71	ppm	1.94	< LOQ	88.0	46-134		
Malathion	1.52	ppm	1.94	< LOQ	78.1	26-148		
Metalaxyl	1.61	ppm	1.94	< LOQ	82.9	60-127		
Methiocarb	1.44	ppm	1.94	< LOQ	74.2	50-131		
Methomyl	1.64	ppm	1.94	< LOQ	84.6	47-135		
Methyl parathion	1.05	ppm	1.94	< LOQ	53.9	15-150		
MGK-264	0.71	ppm	1.22	< LOQ	57.9	20-130		
Myclobutanil	1.41	ppm	1.94	< LOQ	72.8	43-134		
Naled	1.27	ppm	1.94	< LOQ	65.1	38-140		
Oxamyl	1.60	ppm	1.94	< LOQ	82.1	48-127		
Paclobutrazol	1.44	ppm	1.94	< LOQ	74.3	30-136		
Permethrins (total)	0.96	ppm		< LOQ		20-120		
Phosmet	1.45	ppm	1.94	< LOQ	74.6	51-134		
Piperonyl butoxide	1.32	ppm	1.94	< LOQ	68.1	36-134		
Prallethrin	1.17	ppm	1.94	< LOQ	60.0	23-149		
Propiconazole	1.88	ppm	1.94	< LOQ	96.8	45-133		
Propoxur	1.84	ppm	1.94	< LOQ	94.9	59-130		
Pyrethrins (total)	0.95	ppm		< LOQ		15-146		
Pyridaben	1.05	ppm	1.94	< LOQ	54.2	15-150		



Brian Weigel
 Lab Director

These results relate only to the sample included on this report. The report may not be reproduced except in full, without the written permission of SC Laboratories. Samples tested in accordance with Oregon Administrative Rules, TNI 2009 Standard and SC Laboratories quality assurance plan unless otherwise noted.

Quality Control Pesticide Analysis (Continued)

Batch: B190692 - Pesticide Prep (Continued)

Matrix Spike(B190692-MS1)			Extracted - 04/24/19 10:43 Analyzed - 04/24/19 19:48					
Analyte	Result	Units	Spike Level	Source Result	%REC	%REC Limits	RPD	RPD Limit
Spinosad	1.20	ppm	1.59	< LOQ	75.1	23-150		
Spiromesifen	1.19	ppm	1.94	< LOQ	61.1	27-127		
Spirotetramat	1.47	ppm	1.94	< LOQ	75.4	33-150		
Spiroxamine	0.82	ppm	1.07	< LOQ	76.9	54-134		
Tebuconazole	1.40	ppm	1.94	< LOQ	71.8	22-126		
Thiacloprid	1.64	ppm	1.94	< LOQ	84.2	53-138		
Thiamethoxam	1.64	ppm	1.94	< LOQ	84.2	40-134		
Trifloxystrobin	1.71	ppm	1.94	< LOQ	88.1	25-140		

Matrix Spike Dup(B190692-MSD1)			Extracted - 04/24/19 10:43 Analyzed - 04/25/19					
Analyte	Result	Units	Spike Level	Source Result	%REC	%REC Limits	RPD	RPD Limit
Abamectin	1.34	ppm	1.94	< LOQ	68.9	21-150	4.81	40
Acephate	1.60	ppm	1.98	< LOQ	80.9	48-131	1.40	26
Acequinocyl	< LOQ	ppm	1.98	< LOQ		16-148		50
Acetamiprid	1.72	ppm	1.98	< LOQ	86.9	50-145	5.00	30
Aldicarb	1.65	ppm	1.98	< LOQ	83.0	53-133	3.57	30
Azoxystrobin	1.34	ppm	1.98	< LOQ	67.5	35-147	1.85	29
Bifenazate	1.50	ppm	1.98	< LOQ	75.6	43-143	5.09	30
Bifenthrin	0.86	ppm	1.98	< LOQ	43.5	16-107	2.98	29
Boscalid	1.37	ppm	1.98	< LOQ	69.1	42-140	2.34	30
Carbaryl	1.61	ppm	1.98	< LOQ	81.0	71-113	0.158	20
Carbofuran	1.75	ppm	1.98	< LOQ	88.0	73-118	3.34	20
Chlorantraniliprole	4.04	ppm	1.98	< LOQ	204	45-136	4.81	30
Chlorfenapyr	1.52	ppm	1.98	< LOQ	76.8	15-150	10.2	50
Chlorpyrifos	0.81	ppm	1.98	< LOQ	40.9	24-125	1.72	29
Clofentezine	1.60	ppm	1.98	< LOQ	80.7	38-118	1.51	26
Cyfluthrin	1.31	ppm	1.98	< LOQ	66.2	23-139	4.02	50
Cypermethrin	1.08	ppm	1.98	< LOQ	54.4	38-150	8.39	30
Daminozide	1.27	ppm	1.98	< LOQ	63.9	15-150	2.30	26
DDVP (Dichlorvos)	1.59	ppm	1.98	< LOQ	80.3	64-124	0.609	27
Diazinon	1.69	ppm	1.98	< LOQ	85.3	50-123	1.77	20
Dimethoate	1.67	ppm	1.98	< LOQ	84.4	69-116	1.12	20
Ethoprophos	1.56	ppm	1.98	< LOQ	78.5	39-146	2.48	30
Etofenprox	1.07	ppm	1.98	< LOQ	53.7	31-117	0.299	27
Etoxazole	1.40	ppm	1.98	< LOQ	70.4	35-136	1.38	30



Brian Weigel
 Lab Director

These results relate only to the sample included on this report. The report may not be reproduced except in full, without the written permission of SC Laboratories. Samples tested in accordance with Oregon Administrative Rules, TNI 2009 Standard and SC Laboratories quality assurance plan unless otherwise noted.

Quality Control

Pesticide Analysis (Continued)

Batch: B190692 - Pesticide Prep (Continued)

Matrix Spike Dup(B190692-MSD1)			Extracted - 04/24/19 10:43 Analyzed - 04/25/19					
Analyte	Result	Units	Spike Level	Source Result	%REC	%REC Limits	RPD	RPD Limit
Fenoxycarb	1.60	ppm	1.98	< LOQ	80.5	23-150	3.04	40
Fenpyroximate	1.55	ppm	1.98	< LOQ	78.2	30-143	0.530	26
Fipronil	1.12	ppm	1.98	< LOQ	56.2	15-150	2.20	30
Flonicamid	1.45	ppm	1.98	< LOQ	73.0	50-131	2.61	26
Fludioxonil	2.05	ppm	1.98	< LOQ	103	44-150	12.1	30
Hexythiazox	1.35	ppm	1.98	< LOQ	68.1	34-144	1.53	28
Imazalil	1.63	ppm	1.98	< LOQ	82.1	54-124	5.95	24
Imidacloprid	1.67	ppm	1.98	< LOQ	84.3	39-150	9.42	30
Kresoxim-methyl	1.72	ppm	1.98	< LOQ	86.7	46-134	1.50	20
Malathion	1.58	ppm	1.98	< LOQ	79.8	26-148	2.15	50
Metalaxyl	1.70	ppm	1.98	< LOQ	85.5	60-127	3.04	30
Methiocarb	1.52	ppm	1.98	< LOQ	76.8	50-131	3.37	30
Methomyl	1.68	ppm	1.98	< LOQ	84.7	47-135	0.0959	20
Methyl parathion	1.23	ppm	1.98	< LOQ	62.1	15-150	14.2	50
MGK-264	0.76	ppm	1.25	< LOQ	60.4	20-130	4.24	30
Myclobutanil	1.54	ppm	1.98	< LOQ	77.6	43-134	6.39	30
Naled	1.33	ppm	1.98	< LOQ	67.0	38-140	2.78	30
Oxamyl	1.61	ppm	1.98	< LOQ	81.0	48-127	1.42	28
Paclobutrazol	1.52	ppm	1.98	< LOQ	76.5	30-136	3.00	30
Permethrins (total)	1.03	ppm		< LOQ		20-120		28
Phosmet	1.54	ppm	1.98	< LOQ	77.7	51-134	4.12	30
Piperonyl butoxide	1.40	ppm	1.98	< LOQ	70.6	36-134	3.66	30
Prallethrin	1.26	ppm	1.98	< LOQ	63.3	23-149	5.45	30
Propiconazole	1.79	ppm	1.98	< LOQ	90.4	45-133	6.89	30
Propoxur	1.82	ppm	1.98	< LOQ	91.7	59-130	3.45	29
Pyrethrins (total)	1.04	ppm		< LOQ		15-146		28
Pyridaben	1.13	ppm	1.98	< LOQ	56.9	15-150	4.92	29
Spinosad	1.24	ppm	1.63	< LOQ	76.4	23-150	1.66	30
Spiromesifen	1.25	ppm	1.98	< LOQ	63.0	27-127	3.21	28
Spirotetramat	1.45	ppm	1.98	< LOQ	73.1	33-150	3.15	30
Spiroxamine	0.91	ppm	1.09	< LOQ	83.2	54-134	7.85	30
Tebuconazole	1.46	ppm	1.98	< LOQ	73.7	22-126	2.66	21
Thiacloprid	1.64	ppm	1.98	< LOQ	82.7	53-138	1.75	30
Thiamethoxam	1.65	ppm	1.98	< LOQ	83.1	40-134	1.38	28
Trifloxystrobin	1.69	ppm	1.98	< LOQ	85.3	25-140	3.29	30



Brian Weigel
Lab Director

These results relate only to the sample included on this report. The report may not be reproduced except in full, without the written permission of SC Laboratories. Samples tested in accordance with Oregon Administrative Rules, TNI 2009 Standard and SC Laboratories quality assurance plan unless otherwise noted.

Quality Control Solvent Analysis

Batch: B190695 - Residual Solvent Prep

Blank(B190695-BLK1)			Extracted - 04/24/19 10:50 Analyzed - 04/24/19 17:42					
Analyte	Result	Units	Spike Level	Source Result	%REC	%REC Limits	RPD	RPD Limit
1,4-Dioxane	< LOQ	ug/g						
2-Butanol	< LOQ	ug/g						
2-Ethoxyethanol	< LOQ	ug/g						
2-Propanol (IPA)	< LOQ	ug/g						
Acetone	< LOQ	ug/g						
Acetonitrile	< LOQ	ug/g						
Benzene	< LOQ	ug/g						
Butanes	< LOQ	ug/g						
Cyclohexane	< LOQ	ug/g						
Dichloromethane (methylene chloride)	< LOQ	ug/g						
Ethyl acetate	< LOQ	ug/g						
Ethyl ether	< LOQ	ug/g						
Ethylbenzene	< LOQ	ug/g						
Ethylene glycol	< LOQ	ug/g						
Ethylene oxide	< LOQ	ug/g						
Heptane	< LOQ	ug/g						
Hexanes	< LOQ	ug/g						
Isopropyl acetate	< LOQ	ug/g						
Isopropylbenzene (cumene)	< LOQ	ug/g						
Methanol	< LOQ	ug/g						
Pentanes	< LOQ	ug/g						
Propane	< LOQ	ug/g						
Tetrahydrofuran	< LOQ	ug/g						
Toluene	< LOQ	ug/g						
Xylenes	< LOQ	ug/g						

LCS(B190695-BS1)			Extracted - 04/24/19 10:50 Analyzed - 04/24/19 16:39					
Analyte	Result	Units	Spike Level	Source Result	%REC	%REC Limits	RPD	RPD Limit
1,4-Dioxane	564	ug/g	570		99.0	70-130		
2,2-Dimethylbutane	456	ug/g	435		105	70-130		
2-Butanol	3480	ug/g	3500		99.5	70-130		
2-Ethoxyethanol	258	ug/g	240		108	60-140		
2-Methylbutane (isopentane)	3960	ug/g	3500		113	70-130		
2-Methylpentane/2,3-Dimethylbutane	914	ug/g	870		105	70-130		
2-Propanol (IPA)	3700	ug/g	3500		106	70-130		



Brian Weigel
Lab Director

These results relate only to the sample included on this report. The report may not be reproduced except in full, without the written permission of SC Laboratories. Samples tested in accordance with Oregon Administrative Rules, TNI 2009 Standard and SC Laboratories quality assurance plan unless otherwise noted.

Quality Control

Solvent Analysis (Continued)

Batch: B190695 - Residual Solvent Prep (Continued)

LCS(B190695-BS1)		Extracted - 04/24/19 10:50 Analyzed - 04/24/19 16:39						
Analyte	Result	Units	Spike Level	Source Result	%REC	%REC Limits	RPD	RPD Limit
3-Methylpentane	463	ug/g	435		106	70-130		
Acetone	4050	ug/g	3500		116	70-130		
Acetonitrile	609	ug/g	615		98.9	70-130		
Benzene	2.72	ug/g	3.00		90.6	70-130		
Butanes	8280	ug/g				60-140		
Cyclohexane	6490	ug/g	5820		111	70-130		
Dichloromethane (methylene chloride)	918	ug/g	900		102	70-130		
Ethyl acetate	3810	ug/g	3500		109	70-130		
Ethyl ether	4090	ug/g	3500		117	70-130		
Ethylbenzene	3100	ug/g	3250		95.4	70-130		
Ethylene glycol	1100	ug/g	930		118	60-140		
Heptane	3760	ug/g	3500		108	70-130		
Isopropyl acetate	3870	ug/g	3500		110	70-130		
Isopropylbenzene (cumene)	62.4	ug/g	105		59.4	70-130		
m,p-Xylene	6480	ug/g	6510		99.5	60-140		
Methanol	2760	ug/g	2500		111	70-130		
n-Hexane	459	ug/g	435		105	70-130		
n-Pentane	4070	ug/g	3500		116	70-130		
Propane	1500	ug/g	1250		120	60-140		
Tetrahydrofuran	1140	ug/g	1080		105	70-130		
Toluene	1260	ug/g	1340		94.2	70-130		
o-Xylene	3170	ug/g	3250		97.6	70-130		

Matrix Spike(B190695-MS1)		Extracted - 04/24/19 10:50 Analyzed - 04/24/19 17:00						
Analyte	Result	Units	Spike Level	Source Result	%REC	%REC Limits	RPD	RPD Limit
1,4-Dioxane	562	ug/g	545	< LOQ	103	70-130		
2,2-Dimethylbutane	474	ug/g	416	< LOQ	114	70-130		
2-Butanol	3530	ug/g	3350	< LOQ	105	70-130		
2-Ethoxyethanol	260	ug/g	230	< LOQ	113	60-140		
2-Methylbutane (isopentane)	3980	ug/g	3350	< LOQ	119	70-130		
2-Methylpentane/2,3-Dimethylbutane	941	ug/g	833	< LOQ	113	70-130		
2-Propanol (IPA)	3730	ug/g	3350	< LOQ	111	70-130		
3-Methylpentane	477	ug/g	416	< LOQ	115	70-130		
Acetone	4200	ug/g	3350	89.8	123	70-130		
Acetonitrile	616	ug/g	589	< LOQ	105	70-130		



 Brian Weigel
 Lab Director

These results relate only to the sample included on this report. The report may not be reproduced except in full, without the written permission of SC Laboratories. Samples tested in accordance with Oregon Administrative Rules, TNI 2009 Standard and SC Laboratories quality assurance plan unless otherwise noted.

Quality Control Solvent Analysis (Continued)

Batch: B190695 - Residual Solvent Prep (Continued)

Matrix Spike(B190695-MS1)			Extracted - 04/24/19 10:50 Analyzed - 04/24/19 17:00					
Analyte	Result	Units	Spike Level	Source Result	%REC	%REC Limits	RPD	RPD Limit
Benzene	2.94	ug/g	2.87	< LOQ	102	70-130		
Butanes	7800	ug/g		< LOQ		60-140		
Cyclohexane	6630	ug/g	5570	< LOQ	119	70-130		
Dichloromethane (methylene chloride)	945	ug/g	861	< LOQ	110	70-130		
Ethyl acetate	3850	ug/g	3350	71.4	113	70-130		
Ethyl ether	4120	ug/g	3350	< LOQ	123	70-130		
Ethylbenzene	3240	ug/g	3110	< LOQ	104	70-130		
Ethylene glycol	1180	ug/g	890	< LOQ	132	60-140		
Heptane	3900	ug/g	3350	< LOQ	116	70-130		
Isopropyl acetate	3880	ug/g	3350	< LOQ	116	70-130		
Isopropylbenzene (cumene)	466	ug/g	100	< LOQ	464	70-130		
m,p-Xylene	6700	ug/g	6230	< LOQ	108	60-140		
Methanol	2840	ug/g	2390	< LOQ	119	70-130		
n-Hexane	480	ug/g	416	17.7	111	70-130		
n-Pentane	4170	ug/g	3350	< LOQ	124	70-130		
Propane	1440	ug/g	1200	< LOQ	120	60-140		
Tetrahydrofuran	1130	ug/g	1030	< LOQ	109	70-130		
Toluene	1310	ug/g	1280	21.1	100	70-130		
o-Xylene	3260	ug/g	3110	< LOQ	105	70-130		

Matrix Spike Dup(B190695-MSD1)			Extracted - 04/24/19 10:50 Analyzed - 04/24/19					
Analyte	Result	Units	Spike Level	Source Result	%REC	%REC Limits	RPD	RPD Limit
1,4-Dioxane	579	ug/g	556	< LOQ	104	70-130	2.92	30
2,2-Dimethylbutane	490	ug/g	424	< LOQ	116	70-130	3.42	30
2-Butanol	3570	ug/g	3410	< LOQ	105	70-130	1.24	30
2-Ethoxyethanol	270	ug/g	234	< LOQ	115	60-140	3.91	30
2-Methylbutane (isopentane)	4020	ug/g	3410	< LOQ	118	70-130	1.05	30
2-Methylpentane/2,3-Dimethylbutane	961	ug/g	849	< LOQ	113	70-130	2.11	30
2-Propanol (IPA)	3780	ug/g	3410	< LOQ	111	70-130	1.39	30
3-Methylpentane	493	ug/g	424	< LOQ	116	70-130	3.28	30
Acetone	4220	ug/g	3410	89.8	121	70-130	0.448	30
Acetonitrile	623	ug/g	600	< LOQ	104	70-130	1.20	30
Benzene	2.92	ug/g	2.93	< LOQ	99.7	70-130	0.761	30
Butanes	7650	ug/g		< LOQ		60-140	2.01	30
Cyclohexane	6780	ug/g	5680	< LOQ	119	70-130	2.22	30



Brian Weigel
 Lab Director

These results relate only to the sample included on this report. The report may not be reproduced except in full, without the written permission of SC Laboratories. Samples tested in accordance with Oregon Administrative Rules, TNI 2009 Standard and SC Laboratories quality assurance plan unless otherwise noted.

Quality Control Solvent Analysis (Continued)

Batch: B190695 - Residual Solvent Prep (Continued)

Matrix Spike Dup(B190695-MSD1)			Extracted - 04/24/19 10:50 Analyzed - 04/24/19					
Analyte	Result	Units	Spike Level	Source Result	%REC	%REC Limits	RPD	RPD Limit
Dichloromethane (methylene chloride)	960	ug/g	878	< LOQ	109	70-130	1.53	30
Ethyl acetate	3910	ug/g	3410	71.4	112	70-130	1.56	30
Ethyl ether	4200	ug/g	3410	< LOQ	123	70-130	1.94	30
Ethylbenzene	3310	ug/g	3170	< LOQ	104	70-130	2.25	30
Ethylene glycol	1230	ug/g	907	< LOQ	136	60-140	4.50	30
Heptane	3950	ug/g	3410	< LOQ	116	70-130	1.36	30
Isopropyl acetate	3950	ug/g	3410	< LOQ	116	70-130	1.72	30
Isopropylbenzene (cumene)	467	ug/g	102	< LOQ	456	70-130	0.334	30
m,p-Xylene	6840	ug/g	6350	< LOQ	108	60-140	2.00	30
Methanol	2830	ug/g	2440	< LOQ	116	70-130	0.595	30
n-Hexane	491	ug/g	424	17.7	111	70-130	2.31	30
n-Pentane	4200	ug/g	3410	< LOQ	123	70-130	0.905	30
Propane	1400	ug/g	1220	< LOQ	115	60-140	2.51	30
Tetrahydrofuran	1150	ug/g	1050	< LOQ	109	70-130	1.79	30
Toluene	1340	ug/g	1300	21.1	101	70-130	2.78	30
o-Xylene	3360	ug/g	3170	< LOQ	106	70-130	3.24	30



Brian Weigel
Lab Director

These results relate only to the sample included on this report. The report may not be reproduced except in full, without the written permission of SC Laboratories. Samples tested in accordance with Oregon Administrative Rules, TNI 2009 Standard and SC Laboratories quality assurance plan unless otherwise noted.

Quality Control Terpene Analysis

Batch: B190694 - Potency/Terpenes

Blank(B190694-BLK1)			Extracted - 04/24/19 16:11 Analyzed - 04/24/19 18:25					
Analyte	Result	Units	Spike Level	Source Result	%REC	%REC Limits	RPD	RPD Limit
alpha Pinene	< LOQ	%						
Myrcene	< LOQ	%						
alpha Phellandrene	< LOQ	%						
3-Carene	< LOQ	%						
alpha Terpinene	< LOQ	%						
Limonene	< LOQ	%						
Terpinolene	< LOQ	%						
Linalool	< LOQ	%						
Fenchol	< LOQ	%						
Borneol	< LOQ	%						
Terpineol	< LOQ	%						
Geraniol	< LOQ	%						
alpha Humulene	< LOQ	%						
beta Caryophyllene	< LOQ	%						
Caryophyllene Oxide	< LOQ	%						
alpha Bisabolol	< LOQ	%						
Camphene	< LOQ	%						
beta Pinene	< LOQ	%						
Ocimene	< LOQ	%						
Sabinene	< LOQ	%						
Camphor	< LOQ	%						
Isoborneol	< LOQ	%						
Menthol	< LOQ	%						
alpha Cedrene	< LOQ	%						
Nerolidol	< LOQ	%						
R-(+)-Pulegone	< LOQ	%						
Eucalyptol	< LOQ	%						
p-Cymene	< LOQ	%						
(-)-Isopulegol	< LOQ	%						
Geranyl Acetate	< LOQ	%						
Guaiol	< LOQ	%						
Valencene	< LOQ	%						
Phytol	0.162	%						
Citronellol	< LOQ	%						
gamma-Terpinene	< LOQ	%						



Brian Weigel
Lab Director

These results relate only to the sample included on this report. The report may not be reproduced except in full, without the written permission of SC Laboratories. Samples tested in accordance with Oregon Administrative Rules, TNI 2009 Standard and SC Laboratories quality assurance plan unless otherwise noted.

Quality Control

Terpene Analysis (Continued)

Batch: B190694 - Potency/Terpenes (Continued)

Duplicate(B190694-DUP1)		Extracted - 04/24/19 16:11 Analyzed - 04/24/19 18:25						
Analyte	Result	Units	Spike Level	Source Result	%REC	%REC Limits	RPD	RPD Limit
alpha Pinene	< LOQ	%		< LOQ				20
Myrcene	< LOQ	%		< LOQ				20
alpha Phellandrene	< LOQ	%		< LOQ				20
3-Carene	< LOQ	%		< LOQ				20
alpha Terpinene	< LOQ	%		< LOQ				20
Limonene	< LOQ	%		< LOQ				20
Terpinolene	< LOQ	%		< LOQ				20
Linalool	< LOQ	%		< LOQ				20
Fenchol	< LOQ	%		< LOQ				20
Borneol	< LOQ	%		< LOQ				20
Terpineol	< LOQ	%		< LOQ				20
Geraniol	< LOQ	%		< LOQ				20
alpha Humulene	< LOQ	%		< LOQ				20
beta Caryophyllene	< LOQ	%		< LOQ				20
Caryophyllene Oxide	< LOQ	%		< LOQ				20
alpha Bisabolol	< LOQ	%		< LOQ				20
Camphene	< LOQ	%		< LOQ				20
beta Pinene	< LOQ	%		< LOQ				20
Ocimene	< LOQ	%		< LOQ				20
Sabinene	< LOQ	%		< LOQ				20
Camphor	< LOQ	%		< LOQ				20
Isoborneol	< LOQ	%		< LOQ				20
Menthol	< LOQ	%		< LOQ				20
alpha Cedrene	< LOQ	%		< LOQ				20
Nerolidol	< LOQ	%		< LOQ				20
R-(+)-Pulegone	< LOQ	%		< LOQ				20
Eucalyptol	< LOQ	%		< LOQ				20
p-Cymene	< LOQ	%		< LOQ				20
(-)-Isopulegol	< LOQ	%		< LOQ				20
Geranyl Acetate	< LOQ	%		< LOQ				20
Guaiol	< LOQ	%		< LOQ				20
Valencene	< LOQ	%		< LOQ				20
Phytol	0.150	%		0.253			51.2	20
Citronellol	< LOQ	%		< LOQ				20
gamma-Terpinene	< LOQ	%		< LOQ				20



Brian Weigel
Lab Director

These results relate only to the sample included on this report. The report may not be reproduced except in full, without the written permission of SC Laboratories. Samples tested in accordance with Oregon Administrative Rules, TNI 2009 Standard and SC Laboratories quality assurance plan unless otherwise noted.



**OREGON LIQUOR CONTROL COMMISSION
CANNABIS TRANSPORTATION MANIFEST**



19D0121

19D0122

All sales transactions are to be completed prior to transportation of any CANNABIS. The receiving entity may reject product delivered, but amount delivered must be limited to amount agreed upon in prior sales transaction.

Manifest No.:	0001468303	Date Created:	4/22/2019 3:04 PM
Originating Entity:	OM Extracts	For OLCC Use Only	
Originating License Number:	030-10051970949		
Address of Originating Entity:	500 Industrial Circle, Units E, F, G, and H White City, OR 97503		
Phone No. of Originating Entity:	503-688-3289		
Contact Phone No. for Inquiries: 503-688-3289			
Destination # 1	SC Laboratories	Destination Phone No.:	707-339-0050
Destination License Number:	010-1004748743D	Date and Approx. Time of Departure:	4/22/2019 2:54 PM
Address of Destination:	15865 SW 74th Avenue Ste 110 Tigard, OR 97224	Date and Approx. Time of Arrival:	4/23/2019 2:54 PM
		Date/Time Received:	4/23/19 1813
		Notes: details for extenuating circumstances (e.g., road closure, flat tire, etc.)	
Route to be Traveled: Overnight at 744 Dakota Ave I-5 North to SC Laboratories 5865 SW 74th Ave Tigard, OR 97224			
Name of Person Transporting:	Joel Glimpse/ Scott Forster	Handler Permit No. of Driver:	102682/22
State Driver's License No.:	9474950/A625521	Signature of Person Transporting:	
Make, Model, License Plate No.:	scion/nissan XB/NV 200 175 JLS/825 KAT		
Package # 1	Production Batch No.	Item Name	Quantity
1A4010300014ADD000012210 Lab Test: TestPassed Status: Shipped		FECO Bulk - Nine Pound Hammer (Extracts)	Shp: 2.0000 g
Harvests:	3/26/18, OD 10.08.2018 9LB		
Package # 2	Production Batch No.	Item Name	Quantity
1A4010300014ADD000012213 Lab Test: NotSubmitted Status: Shipped		FECO Bulk - Elektra (Extracts)	Shp: 2.0000 g
Package # 3	Production Batch No.	Item Name	Quantity
1A4010300014ADD000012215 Lab Test: SubmittedForTesting Status: Shipped		FECO Bulk - Lifter (Extracts)	Shp: 7.1400 g
Package # 4	Production Batch No.	Item Name	Quantity
1A4010300014ADD000012216 Lab Test: SubmittedForTesting Status: Shipped		FECO Bulk - Green Crack CBD (Extracts)	Shp: 7.1300 g
Harvests:	GCRC#31017, GCRC1017, GCRC1018, GCRC915, GCRC926, GCRCWF1011, GCRCWF1102, GCRCWF915, GCRCWF926		
Package # 5	Production Batch No.	Item Name	Quantity
1A4010300014ADD000012217 Lab Test: SubmittedForTesting Status: Shipped		FECO Bulk - Durban Poison (Extracts)	Shp: 7.1100 g
Harvests:	2018-10-09-Room 5-H		
Package # 6	Production Batch No.	Item Name	Quantity
1A4010300014ADD000012218 Lab Test: SubmittedForTesting Status: Shipped		FECO Bulk - Sour Diesel (Extracts)	Shp: 7.1600 g
Harvests:	Sour Diesel 11/13/18, Sour Diesel 11/14/18		



**OREGON LIQUOR CONTROL COMMISSION
CANNABIS TRANSPORTATION MANIFEST**



19D0121

19D0122

All sales transactions are to be completed prior to transportation of any CANNABIS. The receiving entity may reject product delivered, but amount delivered must be limited to amount agreed upon in prior sales transaction.

Manifest No.:	0001468303	Date Created:	4/22/2019 3:04 PM
PRODUCT REJECTION (if only a portion of shipment is rejected, circle that portion above)			
Name of Person Receiving or Rejecting Product:	Justin Miller		
I confirm that the contents of this shipment match weight records entered above, and I agree to take custody of those portions of this shipment <i>not</i> circled above. Those portions circled were returned to the individual delivering this shipment.			
Signature:	Justin Miller	Date:	4/23/19
Signature of individual taking receipt of rejected portion of this shipment:	Justin Miller		

Client: OM Ext Client License: 10051970949 Date Sampled: 4/22/2019 Thermometer ID: TO05
 Address Where Sampled: 500 Industrial wy Requestor: Jamie Event ID: 19DOM22 Balance ID: BAL_01
 Sampling SOP & Rev. #: SC-OR-SAMP-002 rev. 1.01 Sampler: Joel Transporter: Joel/ Scott Hygrometer ID:

Sampler Signature

Lab ORELAP ID: 4133
 Lab OLCC ID: 1004748743D

Weight used (g)	Weight Set ID	Acceptance Criteria	Initial Measured	Initial P/F	Final Measured	Final P/F
0.5	weight Set ID 01	±2.5%	0.5	P	0.5	P
200		±2.5%	199.94		199.94	



Container Type	METRC Harvest/Processing Lot ID #:				Product Type	Client Sample Name	Product Date	Batch Size (g)
Jar					Concentrate	Lifter	4/22/2019	1399
METRC Batch ID	Product Temp (°C)	Humidity (%)	# of Containers	Sampling Media	# Zones	# of Inc.	1° Sample (g)	Sample Name
1A4010300014ADD000012214	58.1	40.2	1	Vial	1	6	0.583333333	Lifter Primary
Lab Sample ID	Container ID		Increment Zone	Sampling Media Wt. (g)	Wt. Inc+Media (g)	Increment Weight (g)	Sample METRC ID#	
19DOM22-01	Lifter -1		A1		0.59	0.59	1A4010300014ADD000012215	
19DOM22-01	Lifter -1		A1	0.59	1.18	0.59	1A4010300014ADD000012215	
19DOM22-01	Lifter -1		A1	1.18	1.77	0.59	1A4010300014ADD000012215	
19DOM22-01	Lifter -1		A1	1.77	2.36	0.59	1A4010300014ADD000012215	
19DOM22-01	Lifter -1		A1	2.36	2.95	0.59	1A4010300014ADD000012215	
19DOM22-01	Lifter -1		A1	2.95	3.58	0.63	1A4010300014ADD000012215	
Totals:								
6			6		Total Primary Mass = 3.58		Primary + Duplicate Mass = 7.14 g	

Observations and Abnormalities:	Batch #	Equipment	Cont. Types/Sizes	Uniform	Plant Colors	Shape and Size	Sampling Plan ID & Rev. Date

METRC Batch ID	Product Temp (°C)	Humidity (%)	# of Containers	Sampling Media	# Zones	# of Inc.	1° Sample (g)	Sample Name
1A4010300014ADD000012214	58.1	40.2	1	Vial	1	6	0.583333333	Lifter Duplicate
Lab Sample ID	Container ID		Increment Zone	Sampling Media Wt. (g)	Wt. Inc+Media (g)	Increment Weight (g)	Sample METRC ID#	
19DOM22-02	Lifter -1		A1		0.59	0.59	1A4010300014ADD000012215	
19DOM22-02	Lifter -1		A1	0.59	1.18	0.59	1A4010300014ADD000012215	
19DOM22-02	Lifter -1		A1	1.18	1.77	0.59	1A4010300014ADD000012215	
19DOM22-02	Lifter -1		A1	1.77	2.36	0.59	1A4010300014ADD000012215	
19DOM22-02	Lifter -1		A1	2.36	2.95	0.59	1A4010300014ADD000012215	
19DOM22-02	Lifter -1		A1	2.95	3.56	0.61	1A4010300014ADD000012215	

Totals:						6	6	Total Duplicate Mass = 3.56	Primary + Duplicate Mass = 7.14 g
Observations and Abnormalities:	Batch #	Equipment	Cont. Types/Sizes	Uniform	Plant Colors	Shape and Size	Sampling Plan ID & Rev. Date		

Container Type	METRC Harvest/Processing Lot ID #:				Product Type	Client Sample Name	Product Date	Batch Size (g)	
Jar					Concentrate	Green Crack CBD	4/22/2019	1399	
METRC Batch ID	Product Temp (°C)	Humidity (%)	# of Containers	Sampling Media	# Zones	# of Inc.	1° Sample (g)	Sample Name	
1A4010300014ADD000012212	58.1	40.2	1	Vial	1	6	0.58333333	Green Crack CBD Primary	
Lab Sample ID	Container ID		Increment Zone	Sampling Media Wt. (g)	Wt. Inc+Media (g)	Increment Weight (g)	Sample METRC ID#		
19DOM22-03	Green Crack CBD-1		A1		0.59	0.59	1A4010300014ADD000012216		
19DOM22-03	Green Crack CBD-1		A1	0.59	1.18	0.59	1A4010300014ADD000012216		
19DOM22-03	Green Crack CBD-1		A1	1.18	1.77	0.59	1A4010300014ADD000012216		
19DOM22-03	Green Crack CBD-1		A1	1.77	2.36	0.59	1A4010300014ADD000012216		
19DOM22-03	Green Crack CBD-1		A1	2.36	2.95	0.59	1A4010300014ADD000012216		
19DOM22-03	Green Crack CBD-1		A1	2.95	3.57	0.62	1A4010300014ADD000012216		
Totals:						6	6	Total Primary Mass = 3.57	Primary + Duplicate Mass = 7.13 g

Observations and Abnormalities:	Batch #	Equipment	Cont. Types/Sizes	Uniform	Plant Colors	Shape and Size	Sampling Plan ID & Rev. Date		

METRC Batch ID	Product Temp (°C)	Humidity (%)	# of Containers	Sampling Media	# Zones	# of Inc.	1° Sample (g)	Sample Name
1A4010300014ADD000012212	58.1	40.2	1	Vial	1	6	0.58333333	Green Crack CBD Duplicate
Lab Sample ID	Container ID		Increment Zone	Sampling Media Wt. (g)	Wt. Inc+Media (g)	Increment Weight (g)	Sample METRC ID#	
19DOM22-04	Green Crack CBD-1		A1		0.59	0.59	1A4010300014ADD000012216	
19DOM22-04	Green Crack CBD-1		A1	0.59	1.18	0.59	1A4010300014ADD000012216	
19DOM22-04	Green Crack CBD-1		A1	1.18	1.77	0.59	1A4010300014ADD000012216	
19DOM22-04	Green Crack CBD-1		A1	1.77	2.36	0.59	1A4010300014ADD000012216	
19DOM22-04	Green Crack CBD-1		A1	2.36	2.95	0.59	1A4010300014ADD000012216	
19DOM22-04	Green Crack CBD-1		A1	2.95	3.56	0.61	1A4010300014ADD000012216	

Totals:		6	6			Total Duplicate Mass = 3.56		Primary + Duplicate Mass = 7.13 g
Observations and Abnormalities:	Batch #	Equipment	Cont. Types/Sizes	Uniform	Plant Colors	Shape and Size	Sampling Plan ID & Rev. Date	

Container Type	METRC Harvest/Processing Lot ID #:					Product Type	Client Sample Name	Product Date	Batch Size (g)
Jar						Concentrate	Durban Poison	4/22/2019	1399
METRC Batch ID	Product Temp (°C)	Humidity (%)	# of Containers	Sampling Media	# Zones	# of Inc.	1° Sample (g)	Sample Name	
1A4010300014ADD000012211	58.1	40.2	1	Vial	1	6	0.58333333	Durban Poison Primary	
Lab Sample ID	Container ID		Increment Zone	Sampling Media Wt. (g)	Wt. Inc+Media (g)	Increment Weight (g)	Sample METRC ID#		
19DOM22-05	Durban Poison-1		A1		0.59	0.59	1A4010300014ADD000012217		
19DOM22-05	Durban Poison-1		A1	0.59	1.18	0.59	1A4010300014ADD000012217		
19DOM22-05	Durban Poison-1		A1	1.18	1.77	0.59	1A4010300014ADD000012217		
19DOM22-05	Durban Poison-1		A1	1.77	2.36	0.59	1A4010300014ADD000012217		
19DOM22-05	Durban Poison-1		A1	2.36	2.95	0.59	1A4010300014ADD000012217		
19DOM22-05	Durban Poison-1		A1	2.95	3.57	0.62	1A4010300014ADD000012217		
Totals:		6	6			Total Primary Mass = 3.57		Primary + Duplicate Mass = 7.11 g	

Observations and Abnormalities:	Batch #	Equipment	Cont. Types/Sizes	Uniform	Plant Colors	Shape and Size	Sampling Plan ID & Rev. Date	

METRC Batch ID	Product Temp (°C)	Humidity (%)	# of Containers	Sampling Media	# Zones	# of Inc.	1° Sample (g)	Sample Name
1A4010300014ADD000012211	58.1	40.2	1	Vial	1	6	0.58333333	Durban Poison Duplicate
Lab Sample ID	Container ID		Increment Zone	Sampling Media Wt. (g)	Wt. Inc+Media (g)	Increment Weight (g)	Sample METRC ID#	
19DOM22-06	Durban Poison-1		A1		0.59	0.59	1A4010300014ADD000012217	
19DOM22-06	Durban Poison-1		A1	0.59	1.18	0.59	1A4010300014ADD000012217	
19DOM22-06	Durban Poison-1		A1	1.18	1.77	0.59	1A4010300014ADD000012217	
19DOM22-06	Durban Poison-1		A1	1.77	2.36	0.59	1A4010300014ADD000012217	

19DOM22-06	Durban Poison-1	A1	2.36	2.95	0.59	1A4010300014ADD000012217	
19DOM22-06	Durban Poison-1	A1	2.95	3.54	0.59	1A4010300014ADD000012217	
Totals:		6	6	Total Duplicate Mass = 3.54		Primary + Duplicate Mass = 7.11 g	
Observations and Abnormalities:	Batch #	Equipment	Cont. Types/Sizes	Uniform	Plant Colors	Shape and Size	Sampling Plan ID & Rev. Date

Container Type	METRC Harvest/Processing Lot ID #:				Product Type	Client Sample Name	Product Date	Batch Size (g)
Jar					Concentrate	Sour Diesel	4/22/2019	1399
METRC Batch ID	Product Temp (°C)	Humidity (%)	# of Containers	Sampling Media	# Zones	# of Inc.	1° Sample (g)	Sample Name
1A4010300014ADD000012209	58.1	40.2	1	Vial	1	6	0.583333333	Sour Diesel Primary
Lab Sample ID	Container ID		Increment Zone	Sampling Media Wt. (g)	Wt. Inc+Media (g)	Increment Weight (g)	Sample METRC ID#	
19DOM22-07	Sour Diesel-1		A1		0.59	0.59	1A4010300014ADD000012218	
19DOM22-07	Sour Diesel-1		A1	0.59	1.18	0.59	1A4010300014ADD000012218	
19DOM22-07	Sour Diesel-1		A1	1.18	1.77	0.59	1A4010300014ADD000012218	
19DOM22-07	Sour Diesel-1		A1	1.77	2.36	0.59	1A4010300014ADD000012218	
19DOM22-07	Sour Diesel-1		A1	2.36	2.95	0.59	1A4010300014ADD000012218	
19DOM22-07	Sour Diesel-1		A1	2.95	3.54	0.59	1A4010300014ADD000012218	
Totals:		6	6	Total Primary Mass = 3.54		Primary + Duplicate Mass = 7.16 g		
Observations and Abnormalities:	Batch #	Equipment	Cont. Types/Sizes	Uniform	Plant Colors	Shape and Size	Sampling Plan ID & Rev. Date	
METRC Batch ID	Product Temp (°C)	Humidity (%)	# of Containers	Sampling Media	# Zones	# of Inc.	1° Sample (g)	Sample Name
1A4010300014ADD000012209	58.1	40.2	1	Vial	1	6	0.583333333	Sour Diesel Duplicate

Lab Sample ID	Container ID	Increment Zone	Sampling Media Wt. (g)	Wt. Inc+Media (g)	Increment Weight (g)	Sample METRC ID#	
19DOM22-08	Sour Diesel-1	A1		0.59	0.59	1A4010300014ADD000012218	
19DOM22-08	Sour Diesel-1	A1	0.59	1.18	0.59	1A4010300014ADD000012218	
19DOM22-08	Sour Diesel-1	A1	1.18	1.77	0.59	1A4010300014ADD000012218	
19DOM22-08	Sour Diesel-1	A1	1.77	2.36	0.59	1A4010300014ADD000012218	
19DOM22-08	Sour Diesel-1	A1	2.36	2.95	0.59	1A4010300014ADD000012218	
19DOM22-08	Sour Diesel-1	A1	2.95	3.62	0.67	1A4010300014ADD000012218	
Totals:		6	6	Total Duplicate Mass = 3.62		Primary + Duplicate Mass = 7.16 g	
Observations and Abnormalities:	Batch #	Equipment	Cont. Types/Sizes	Uniform	Plant Colors	Shape and Size	Sampling Plan ID & Rev. Date

CHAIN OF CUSTODY

SC Laboratories Oregon LLC
 15865 SW 74th Avenue, Ste 110
 Tigard OR, 97224
 (503) 272-8830
 ORELAP ID # 4133
www.sclabs.com

Client	OM Ext	COC #	1/1
Address Where Sampled	500 Industrial wy	Work Order #	19DOM22
Date Sampled	4/22/2019	Received By	<i>JS</i>
OLCC License #	10051970949	Received Date	4/23/19
OLCC License Type	Processor	Courier	Joel/Scott
Email		Name of Sampler	Joel
Phone		Transfer Manifest #	1468303
Sampler OLCC License #	010-1004748743D	Place where Sampled	500 Industrial wy



19D0121

Sample Type Legend
 U - Usable Marijuana
 C - Concentrate
 P - Product
 O - Other

Sample Name	Time	METRC Label	Unique Batch Number	SC Labs LIMS ID	Sample Type	Total Sample Mass	# of Increments	TESTS REQUESTED					Sample Specific Notes
								Potency	Moisture Content	Pesticide	Residual Solvent	Terpene	
Lifter Primary	14:12	1A4010300014ADD000012215	Lifter	19DOM22-01	C	3.58	6	X	X	X	X	X	RUSH FOR TINCTURES
Lifter Duplicate	14:16	1A4010300014ADD000012215	Lifter	19DOM22-02	C	3.56	6	X	X	X	X	X	RUSH FOR TINCTURES
Green Crack CBD Primary	14:21	1A4010300014ADD000012216	Green Crack CBD	19DOM22-03	C	3.57	6	X	X	X	X	X	RUSH FOR TINCTURES
Green Crack CBD Duplicate	14:23	1A4010300014ADD000012216	Green Crack CBD	19DOM22-04	C	3.56	6	X	X	X	X	X	RUSH FOR TINCTURES
Durban Poison Primary	14:24	1A4010300014ADD000012217	Durban Poison	19DOM22-05	C	3.57	6	X	X	X	X	X	RUSH FOR TINCTURES
Durban Poison Duplicate	14:29	1A4010300014ADD000012217	Durban Poison	19DOM22-06	C	3.54	6	X	X	X	X	X	RUSH FOR TINCTURES
Sour Diesel Primary	14:36	1A4010300014ADD000012218	Sour Diesel	19DOM22-07	C	3.54	6	X	X	X	X	X	RUSH FOR TINCTURES
Sour Diesel Duplicate	14:41	1A4010300014ADD000012218	Sour Diesel	19DOM22-08	C	3.62	6	X	X	X	X	X	RUSH FOR TINCTURES

Notes/Special Considerations: Opt OUT of Sample Duplicate Yes No

Samples Relinquished	Samples Received
Print Name: <i>Joel</i> Date: <i>4/22/19</i> Representative of: <i>DM Extracts LLC</i> Signature: <i>[Signature]</i> Time: <i>3:10</i>	Print Name: <i>Joel</i> Date: <i>4/22/19</i> Representative of: <i>SC Labs</i> Signature: <i>[Signature]</i> Time: <i>3:10</i>
Print Name: <i>Joel</i> Date: <i>4/23/19</i> Representative of: <i>SC Labs</i> Signature: <i>[Signature]</i> Time: <i>3:50</i>	Print Name: <i>Scott</i> Date: <i>4/23</i> Representative of: <i>SC Labs</i> Signature: <i>[Signature]</i> Time: <i>3:50</i>