

Sample Name: **CSS Primary**
 Tested for: **OM Extracts**
Compliance Concentrate

Laboratory ID: 18J0041-03

Matrix: Extracts and Concentrates

Sample Metrc ID: 1A4010300014ADD000007990

Lot # 180910-CSS Tincture

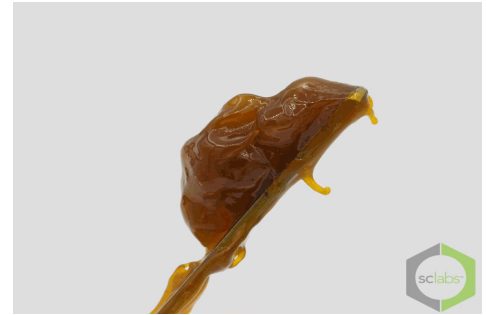
Date Sampled: 10/10/18 12:44

Batch RFID: 1A4010300014ADD000007975

Date Accepted: 10/11/18

Batch Size: 2724 (g)

Results Valid Until: 10/10/19



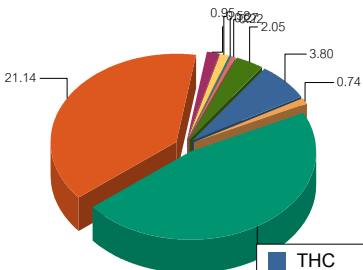
Potency Analysis

Date Extracted: 10/15/18

Analysis Method/SOP: Potency

Date Analyzed: 10/15/18

* - ORELAP certified analyte

Cannabinoids	% weight	mg/g	Cannabinoids Profile																				
Total THC ((THCA*0.877)+d9)	4.45	44.5	 <table border="1"> <tr><td>THC</td><td>3.80</td></tr> <tr><td>THCA</td><td>0.74</td></tr> <tr><td>CBD</td><td>25.68</td></tr> <tr><td>CBDA</td><td>21.14</td></tr> <tr><td>CBG</td><td>0.95</td></tr> <tr><td>CBGA</td><td>0.58</td></tr> <tr><td>CBDV</td><td>0.27</td></tr> <tr><td>CBDVA</td><td>0.22</td></tr> <tr><td>CBC</td><td>2.05</td></tr> <tr><td>Total:</td><td>55.42</td></tr> </table>	THC	3.80	THCA	0.74	CBD	25.68	CBDA	21.14	CBG	0.95	CBGA	0.58	CBDV	0.27	CBDVA	0.22	CBC	2.05	Total:	55.42
THC	3.80																						
THCA	0.74																						
CBD	25.68																						
CBDA	21.14																						
CBG	0.95																						
CBGA	0.58																						
CBDV	0.27																						
CBDVA	0.22																						
CBC	2.05																						
Total:	55.42																						
Total CBD ((CBDA*0.877)+CBD)	44.22	442.2																					
d9-THC (d9-Tetrahydrocannabinol)*	3.80	38																					
d8-THC (d8-Tetrahydrocannabinol)*	< LOQ	< LOQ																					
THCA (d9-Tetrahydrocannabinolic Acid)*	0.74	7.4																					
CBD (Cannabidiol)*	25.68	256.8																					
CBDA (Cannabidiolic Acid)*	21.14	211.4																					
CBN (Cannabinol)*	< LOQ	< LOQ																					
CBG (Cannabigerol)*	0.95	9.5																					
CBGA (Cannabigerolic Acid)	0.58	5.8																					
CBDV (Cannabidivarin)*	0.27	2.7																					
CBDVA (Cannabidivarinic Acid)	0.22	2.2																					
CBC (Cannabichromene)*	2.05	20.5																					
THCV (Tetrahydrocannabivarin)	< LOQ	< LOQ																					
Total Cannabinoids	55.42	554.2																					

<LOQ - Results below the Limit of Quantitation - Compound not detected



Brian Weigel
Lab Director

These results relate only to the sample included on this report. The report may not be reproduced except in full, without the written permission of SC Laboratories. Samples tested in accordance with Oregon Administrative Rules, TNI 2009 Standard and SC Laboratories quality assurance plan unless otherwise noted.

Sample Name: **CSS Duplicate**
 Tested for: **OM Extracts**
Compliance Concentrate

Laboratory ID: 18J0041-04

Matrix: Extracts and Concentrates

Sample Metrc ID: 1A4010300014ADD000007990

Lot # 180910-CSS Tincture

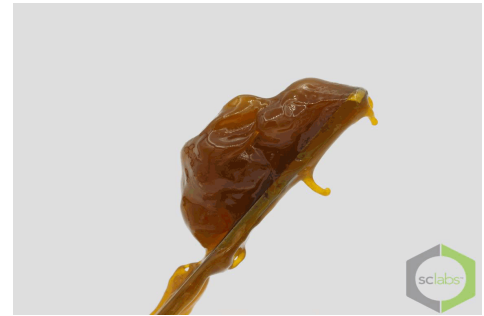
Date Sampled: 10/10/18 12:48

Batch RFID: 1A4010300014ADD000007975

Date Accepted: 10/11/18

Batch Size: 2724 (g)

Results Valid Until: 10/10/19



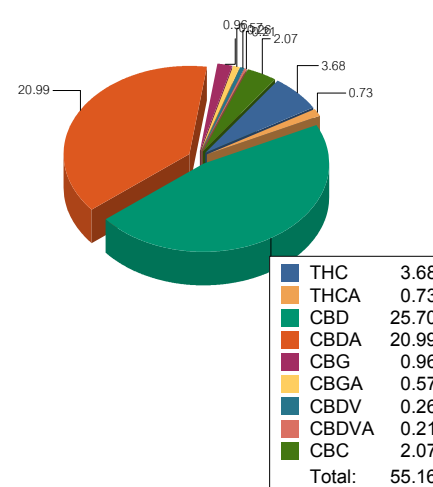
Potency Analysis

Date Extracted: 10/15/18

Analysis Method/SOP: Potency

Date Analyzed: 10/15/18

* - ORELAP certified analyte

Cannabinoids	% weight	mg/g	Cannabinoids Profile																				
Total THC ((THCA*0.877)+d9)	4.32	43.2	 <table border="1"> <tr><td>THC</td><td>3.68</td></tr> <tr><td>THCA</td><td>0.73</td></tr> <tr><td>CBD</td><td>25.70</td></tr> <tr><td>CBDA</td><td>20.99</td></tr> <tr><td>CBG</td><td>0.96</td></tr> <tr><td>CBGA</td><td>0.57</td></tr> <tr><td>CBDV</td><td>0.26</td></tr> <tr><td>CBDVA</td><td>0.21</td></tr> <tr><td>CBC</td><td>2.07</td></tr> <tr><td>Total:</td><td>55.16</td></tr> </table>	THC	3.68	THCA	0.73	CBD	25.70	CBDA	20.99	CBG	0.96	CBGA	0.57	CBDV	0.26	CBDVA	0.21	CBC	2.07	Total:	55.16
THC	3.68																						
THCA	0.73																						
CBD	25.70																						
CBDA	20.99																						
CBG	0.96																						
CBGA	0.57																						
CBDV	0.26																						
CBDVA	0.21																						
CBC	2.07																						
Total:	55.16																						
Total CBD ((CBDA*0.877)+CBD)	44.10	441																					
d9-THC (d9-Tetrahydrocannabinol)*	3.68	36.8																					
d8-THC (d8-Tetrahydrocannabinol)*	< LOQ	< LOQ																					
THCA (d9-Tetrahydrocannabinolic Acid)*	0.73	7.3																					
CBD (Cannabidiol)*	25.70	257																					
CBDA (Cannabidiolic Acid)*	20.99	209.9																					
CBN (Cannabinol)*	< LOQ	< LOQ																					
CBG (Cannabigerol)*	0.96	9.6																					
CBGA (Cannabigerolic Acid)	0.57	5.7																					
CBDV (Cannabidivarin)*	0.26	2.6																					
CBDVA (Cannabidivarinic Acid)	0.21	2.1																					
CBC (Cannabichromene)*	2.07	20.7																					
THCV (Tetrahydrocannabivarin)	< LOQ	< LOQ																					
Total Cannabinoids	55.16	551.6																					

<LOQ - Results below the Limit of Quantitation - Compound not detected

Sample Name: **CSS**

Sample Metrc ID: 1A4010300014ADD000007990

	Primary Result	Duplicate Result	Average	% RPD	Pass/Fail (<20%RPD)
	%	%	%		
Total THC ((THCA*0.877)+d9)	4.45	4.32	4.39	2.96	PASS


 Brian Weigel
 Lab Director

These results relate only to the sample included on this report. The report may not be reproduced except in full, without the written permission of SC Laboratories. Samples tested in accordance with Oregon Administrative Rules, TNI 2009 Standard and SC Laboratories quality assurance plan unless otherwise noted.

Sample Name: CSS Primary	Date Sampled: 10/10/18 12:44
Tested for: OM Extracts	Date Accepted: 10/11/18
Compliance Concentrate	Results Valid Until: 10/10/19
Laboratory ID: 18J0041-03	Sample Metrc ID: 1A4010300014ADD000007990
Matrix: Extracts and Concentrates	Batch RFID: 1A4010300014ADD000007975
Lot # 180910-CSS Tincture	Batch Size: 2724 (g)

Terpene Analysis

Date Extracted: 10/15/18 Analysis Method/SOP: Terpenes
 Date Analyzed: 10/15/18

Analyte	Result (%)	LOQ	Analyte	Result	LOQ
alpha Pinene	0.346	0.098	Myrcene	0.706	0.098
alpha Phellandrene	< LOQ	0.098	3-Carene	< LOQ	0.098
alpha Terpinene	< LOQ	0.098	Limonene	0.305	0.098
Terpinolene	0.160	0.098	Linalool	< LOQ	0.098
Fenchol	< LOQ	0.098	Borneol	< LOQ	0.098
Terpineol	< LOQ	0.098	Geraniol	< LOQ	0.098
alpha Humulene	0.594	0.098	beta Caryophyllene	2.030	0.098
Caryophyllene Oxide	< LOQ	0.098	alpha Bisabolol	0.700	0.098
Camphene	< LOQ	0.098	beta Pinene	< LOQ	0.098
Ocimene	< LOQ	0.098	Sabinene	< LOQ	0.098
Camphor	< LOQ	0.098	Isoborneol	< LOQ	0.098
Menthol	< LOQ	0.098	alpha Cedrene	< LOQ	0.098
Nerolidol	< LOQ	0.098	R-(+)-Pulegone	< LOQ	0.098
Eucalyptol	< LOQ	0.098	p-Cymene	< LOQ	0.098
(-)-Isopulegol	< LOQ	0.098	Geranyl Acetate	< LOQ	0.098
Guaiol	0.300	0.098	Valencene	0.243	0.098
Phytol	< LOQ	0.098	Citronellol	< LOQ	0.098
gamma-Terpinene	< LOQ	0.098			
			Total Terpenes	5.383 %	

<LOQ - Results below the Limit of Quantitation - Compound not detected
 Terpene Analysis is not ORELAP Accredited.

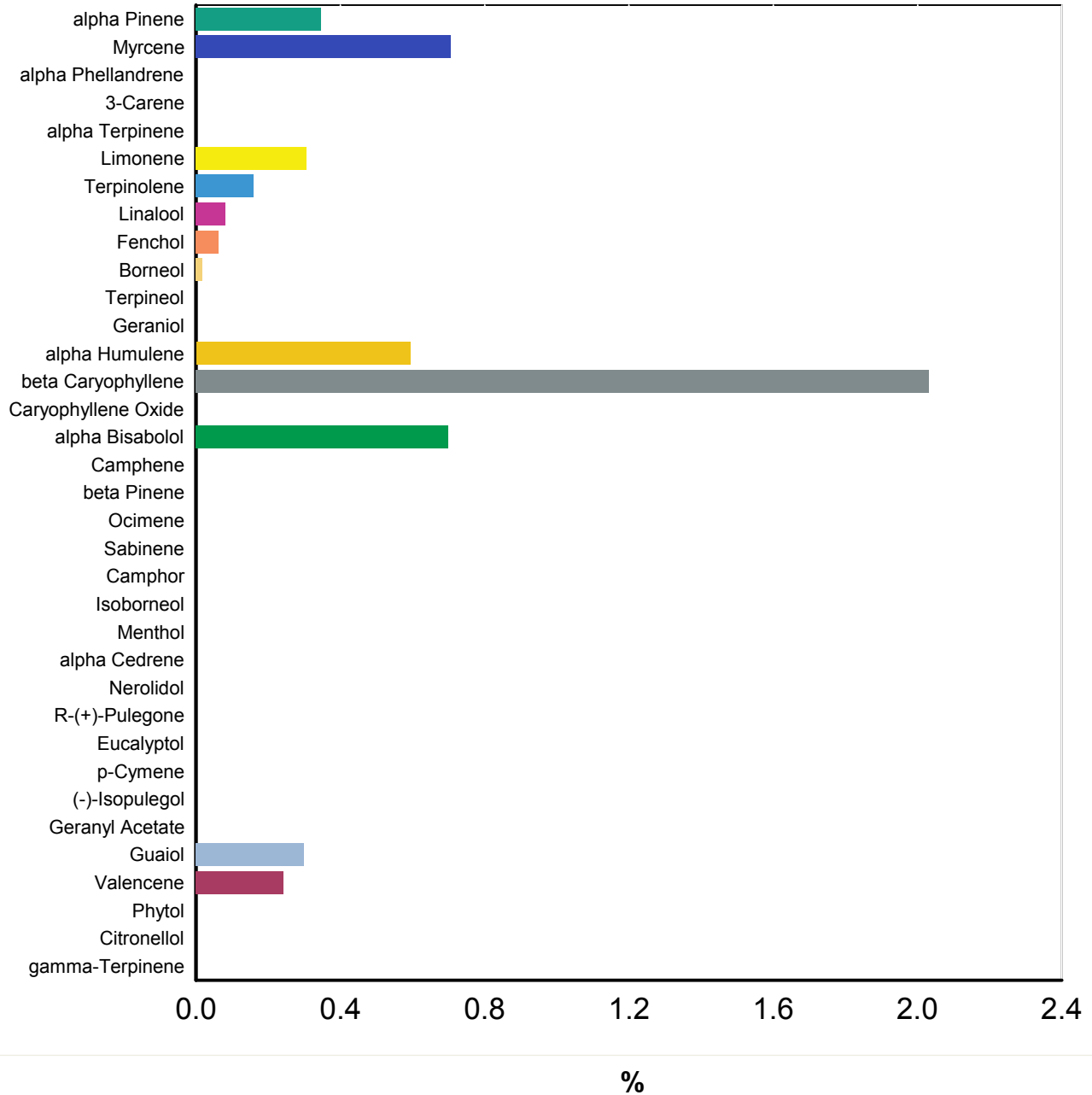


Brian Weigel
 Lab Director

These results relate only to the sample included on this report. The report may not be reproduced except in full, without the written permission of SC Laboratories. Samples tested in accordance with Oregon Administrative Rules, TNI 2009 Standard and SC Laboratories quality assurance plan unless otherwise noted.

Sample Name: CSS Primary	Date Sampled: 10/10/18 12:44
Tested for: OM Extracts	Date Accepted: 10/11/18 18:20
Compliance Concentrate	Results Valid Until: 10/10/19
Laboratory ID: 18J0041-03	Matrix: Extracts and
	Client/Metric ID: 1A4010300014ADD000007990

Terpene Profile




Brian Weigel
Lab Director

These results relate only to the sample included on this report. The report may not be reproduced except in full, without the written permission of SC Laboratories. Samples tested in accordance with Oregon Administrative Rules, TNI 2009 Standard and SC Laboratories quality assurance plan unless otherwise noted.

Sample Name: **CSS Primary** Date Sampled: **10/10/18 12:44**
 Tested for: **OM Extracts** Date Accepted: **10/11/18**
Compliance Concentrate Results Valid Until: **10/10/19**

Laboratory ID: **18J0041-03** Sample Metrc ID: **1A4010300014ADD000007990**
 Matrix: **Extracts and Concentrates** Batch RFID: **1A4010300014ADD000007975**
 Lot # **180910-CSS Tincture** Batch Size: **2724 (g)**

Pesticide Analysis in ppm

Date Extracted: 10/12/18 Analysis Method/SOP: Pesticides
 Date Analyzed: 10/16/18 Results above the action levels are highlighted in red #.

Analyte	Result	Action Level	LOQ	Analyte	Result	Action Level	LOQ
Abamectin	< LOQ	0.5	0.245	Acephate	< LOQ	0.4	0.196
Acequinocyl	< LOQ	2	0.980	Acetamiprid	< LOQ	0.2	0.098
Aldicarb	< LOQ	0.4	0.196	Azoxystrobin	< LOQ	0.2	0.098
Bifenazate	< LOQ	0.2	0.098	Bifenthrin	< LOQ	0.2	0.098
Boscalid	< LOQ	0.4	0.196	Carbaryl	< LOQ	0.2	0.098
Carbofuran	< LOQ	0.2	0.098	Chlorantraniliprole	< LOQ	0.2	0.098
Chlorfenapyr	< LOQ	1	0.490	Chlorpyrifos	< LOQ	0.2	0.098
Clofentezine	< LOQ	0.2	0.098	Cyfluthrin	< LOQ	1	0.490
Cypermethrin	< LOQ	1	0.490	Daminozide	< LOQ	1	0.490
DDVP (Dichlorvos)	< LOQ	1	0.490	Diazinon	< LOQ	0.2	0.098
Dimethoate	< LOQ	0.2	0.098	Ethoprophos	< LOQ	0.2	0.098
Etofenprox	< LOQ	0.4	0.196	Etoxazole	< LOQ	0.2	0.098
Fenoxycarb	< LOQ	0.2	0.098	Fenpyroximate	< LOQ	0.4	0.196
Fipronil	< LOQ	0.4	0.196	Fonicamid	< LOQ	1	0.490
Fludioxonil	< LOQ	0.4	0.196	Hexythiazox	< LOQ	1	0.490
Imazalil	< LOQ	0.2	0.098	Imidacloprid	< LOQ	0.4	0.196
Kresoxim-methyl	< LOQ	0.4	0.196	Malathion	< LOQ	0.2	0.098
Metalaxyl	< LOQ	0.2	0.098	Methiocarb	< LOQ	0.2	0.098
Methomyl	< LOQ	0.4	0.196	Methyl parathion	< LOQ	0.2	0.098
MGK-264	< LOQ	0.2	0.098	Myclobutanil	< LOQ	0.2	0.098
Naled	< LOQ	0.5	0.245	Oxamyl	< LOQ	1	0.490
Paclobutrazol	< LOQ	0.4	0.196	Permethrins (total)	< LOQ	0.2	0.098
Phosmet	< LOQ	0.2	0.098	Piperonyl butoxide	< LOQ	2	0.490
Prallethrin	< LOQ	0.2	0.098	Propiconazole	< LOQ	0.4	0.196
Propoxur	< LOQ	0.2	0.098	Pyrethrins (total)	< LOQ	1	0.490
Pyridaben	< LOQ	0.2	0.098	Spinosad	< LOQ	0.2	0.098
Spiromesifen	< LOQ	0.2	0.098	Spirotetramat	< LOQ	0.2	0.098
Spiroxamine	< LOQ	0.4	0.196	Tebuconazole	< LOQ	0.4	0.196
Thiacloprid	< LOQ	0.2	0.098	Thiamethoxam	< LOQ	0.2	0.098
Trifloxystrobin	< LOQ	0.2	0.098				

<LOQ - Results below the Limit of Quantitation - Compound not detected



Brian Weigel
Lab Director

These results relate only to the sample included on this report. The report may not be reproduced except in full, without the written permission of SC Laboratories. Samples tested in accordance with Oregon Administrative Rules, TNI 2009 Standard and SC Laboratories quality assurance plan unless otherwise noted.

Sample Name: **CSS Duplicate** Date Sampled: **10/10/18 12:48**
 Tested for: **OM Extracts** Date Accepted: **10/11/18**
Compliance Concentrate Results Valid Until: **10/10/19**

Laboratory ID: **18J0041-04** Sample Metrc ID: **1A4010300014ADD000007990**
 Matrix: **Extracts and Concentrates** Batch RFID: **1A4010300014ADD000007975**
 Lot # **180910-CSS Tincture** Batch Size: **2724 (g)**

Pesticide Analysis in ppm

Date Extracted: 10/12/18 Analysis Method/SOP: Pesticides
 Date Analyzed: 10/16/18 Results above the action levels are highlighted in red #.

Analyte	Result	Action Level	LOQ	Analyte	Result	Action Level	LOQ
Abamectin	< LOQ	0.5	0.243	Acephate	< LOQ	0.4	0.194
Acequinocyl	< LOQ	2	0.972	Acetamiprid	< LOQ	0.2	0.097
Aldicarb	< LOQ	0.4	0.194	Azoxystrobin	< LOQ	0.2	0.097
Bifenazate	< LOQ	0.2	0.097	Bifenthrin	< LOQ	0.2	0.097
Boscalid	< LOQ	0.4	0.194	Carbaryl	< LOQ	0.2	0.097
Carbofuran	< LOQ	0.2	0.097	Chlorantraniliprole	< LOQ	0.2	0.097
Chlorfenapyr	< LOQ	1	0.486	Chlorpyrifos	< LOQ	0.2	0.097
Clofentezine	< LOQ	0.2	0.097	Cyfluthrin	< LOQ	1	0.486
Cypermethrin	< LOQ	1	0.486	Daminozide	< LOQ	1	0.486
DDVP (Dichlorvos)	< LOQ	1	0.486	Diazinon	< LOQ	0.2	0.097
Dimethoate	< LOQ	0.2	0.097	Ethoprophos	< LOQ	0.2	0.097
Etofenprox	< LOQ	0.4	0.194	Etoxazole	< LOQ	0.2	0.097
Fenoxycarb	< LOQ	0.2	0.097	Fenpyroximate	< LOQ	0.4	0.194
Fipronil	< LOQ	0.4	0.194	Fonicamid	< LOQ	1	0.486
Fludioxonil	< LOQ	0.4	0.194	Hexythiazox	< LOQ	1	0.486
Imazalil	< LOQ	0.2	0.097	Imidacloprid	< LOQ	0.4	0.194
Kresoxim-methyl	< LOQ	0.4	0.194	Malathion	< LOQ	0.2	0.097
Metalaxyl	< LOQ	0.2	0.097	Methiocarb	< LOQ	0.2	0.097
Methomyl	< LOQ	0.4	0.194	Methyl parathion	< LOQ	0.2	0.097
MGK-264	< LOQ	0.2	0.097	Myclobutanil	< LOQ	0.2	0.097
Naled	< LOQ	0.5	0.243	Oxamyl	< LOQ	1	0.486
Paclobutrazol	< LOQ	0.4	0.194	Permethrins (total)	< LOQ	0.2	0.097
Phosmet	< LOQ	0.2	0.097	Piperonyl butoxide	< LOQ	2	0.486
Prallethrin	< LOQ	0.2	0.097	Propiconazole	< LOQ	0.4	0.194
Propoxur	< LOQ	0.2	0.097	Pyrethrins (total)	< LOQ	1	0.486
Pyridaben	< LOQ	0.2	0.097	Spinosad	< LOQ	0.2	0.097
Spiromesifen	< LOQ	0.2	0.097	Spirotetramat	< LOQ	0.2	0.097
Spiroxamine	< LOQ	0.4	0.194	Tebuconazole	< LOQ	0.4	0.194
Thiacloprid	< LOQ	0.2	0.097	Thiamethoxam	< LOQ	0.2	0.097
Trifloxystrobin	< LOQ	0.2	0.097				

<LOQ - Results below the Limit of Quantitation - Compound not detected



Brian Weigel
Lab Director

These results relate only to the sample included on this report. The report may not be reproduced except in full, without the written permission of SC Laboratories. Samples tested in accordance with Oregon Administrative Rules, TNI 2009 Standard and SC Laboratories quality assurance plan unless otherwise noted.

Sample Name: CSS Primary	Date Sampled: 10/10/18 12:44
Tested for: OM Extracts	Date Accepted: 10/11/18
Compliance Concentrate	Results Valid Until: 10/10/19
Laboratory ID: 18J0041-03	Sample Metric ID: 1A4010300014ADD000007990
Matrix: Extracts and Concentrates	Batch RFID: 1A4010300014ADD000007975
Lot # 180910-CSS Tincture	Batch Size: 2724 (g)

Residual Solvents

Solvent	Results in ug/g	Action Level	LOQ	Date Extracted: 10/12/18
1,4-Dioxane	< LOQ	380	71.3	Date Analyzed: 10/12/18
2-Butanol	< LOQ	5000	438	Analysis Method/SOP: RST
2-Ethoxyethanol	< LOQ	160	30.0	
2-Propanol (IPA)	< LOQ	5000	438	
Acetone	< LOQ	5000	438	
Acetonitrile	< LOQ	400	76.9	
Benzene	< LOQ	2	0.750	
Butanes	< LOQ	5000	313	
Cyclohexane	< LOQ	3880	728	
Dichloromethane (methylene chloride)	< LOQ	600	113	
Ethyl acetate	< LOQ	5000	438	
Ethyl ether	< LOQ	5000	438	
Ethylbenzene	< LOQ	2170	406	
Ethylene glycol	< LOQ	620	116	
Ethylene oxide	< LOQ	50	37.5	
Heptane	< LOQ	5000	438	
Hexanes	< LOQ	290	54.4	
Isopropyl acetate	< LOQ	5000	438	
Isopropylbenzene (cumene)	< LOQ	70	13.1	
Methanol	< LOQ	3000	313	
Pentanes	< LOQ	5000	438	
Propane	< LOQ	5000	125	
Tetrahydrofuran	< LOQ	720	135	
Toluene	< LOQ	890	167	
Xylenes	< LOQ	2170	406	

<LOQ - Results below the Limit of Quantitation - Compound not detected
 Results above the Action Level fail state testing requirements and will be highlighted **Red #**.



Brian Weigel
Lab Director

These results relate only to the sample included on this report. The report may not be reproduced except in full, without the written permission of SC Laboratories. Samples tested in accordance with Oregon Administrative Rules, TNI 2009 Standard and SC Laboratories quality assurance plan unless otherwise noted.

Sample Name: CSS Duplicate	Date Sampled: 10/10/18 12:48
Tested for: OM Extracts	Date Accepted: 10/11/18
Compliance Concentrate	Results Valid Until: 10/10/19
Laboratory ID: 18J0041-04	Sample Metric ID: 1A4010300014ADD000007990
Matrix: Extracts and Concentrates	Batch RFID: 1A4010300014ADD000007975
Lot # 180910-CSS Tincture	Batch Size: 2724 (g)

Residual Solvents

Solvent	Results in ug/g	Action Level	LOQ	Date Extracted: 10/12/18
1,4-Dioxane	< LOQ	380	71.3	Date Analyzed: 10/12/18
2-Butanol	< LOQ	5000	438	Analysis Method/SOP: RST
2-Ethoxyethanol	< LOQ	160	30.0	
2-Propanol (IPA)	< LOQ	5000	438	
Acetone	< LOQ	5000	438	
Acetonitrile	< LOQ	400	76.9	
Benzene	< LOQ	2	0.750	
Butanes	< LOQ	5000	313	
Cyclohexane	< LOQ	3880	728	
Dichloromethane (methylene chloride)	< LOQ	600	113	
Ethyl acetate	< LOQ	5000	438	
Ethyl ether	< LOQ	5000	438	
Ethylbenzene	< LOQ	2170	406	
Ethylene glycol	< LOQ	620	116	
Ethylene oxide	< LOQ	50	37.5	
Heptane	< LOQ	5000	438	
Hexanes	< LOQ	290	54.4	
Isopropyl acetate	< LOQ	5000	438	
Isopropylbenzene (cumene)	< LOQ	70	13.1	
Methanol	< LOQ	3000	313	
Pentanes	< LOQ	5000	438	
Propane	< LOQ	5000	125	
Tetrahydrofuran	< LOQ	720	135	
Toluene	< LOQ	890	167	
Xylenes	< LOQ	2170	406	

<LOQ - Results below the Limit of Quantitation - Compound not detected
 Results above the Action Level fail state testing requirements and will be highlighted **Red #**.



Brian Weigel
Lab Director

These results relate only to the sample included on this report. The report may not be reproduced except in full, without the written permission of SC Laboratories. Samples tested in accordance with Oregon Administrative Rules, TNI 2009 Standard and SC Laboratories quality assurance plan unless otherwise noted.

Case Narrative

Residual Solvents - Isopropylbenzene above normally accepted recovery criteria in the Matrix Spike and Matrix Spike Duplicate due to pinene coelution. Analyte below reporting limit in all client samples.

**Quality Control
Potency**

Batch: B180933 - Potency/Terpenes

Blank(B180933-BLK1)			Extracted - 10/15/18 11:41 Analyzed - 10/15/18 17:33					
Analyte	Result	Units	Spike Level	Source Result	%REC	%REC Limits	RPD	RPD Limit
d9-THC (d9-Tetrahydrocannabinol)	< LOQ	%						
d8-THC (d8-Tetrahydrocannabinol)	< LOQ	%						
THCA (d9-Tetrahydrocannabinolic Acid)	< LOQ	%						
CBD (Cannabidiol)	< LOQ	%						
CBDA (Cannabidiolic Acid)	< LOQ	%						
CBN (Cannabinol)	< LOQ	%						
CBG (Cannabigerol)	< LOQ	%						
CBGA (Cannabigerolic Acid)	< LOQ	%						
CBDV (Cannabidivarin)	< LOQ	%						
CBDVA (Cannabidivarinic Acid)	< LOQ	%						
CBC (Cannabichromene)	< LOQ	%						
THCV (Tetrahydrocannabivarin)	< LOQ	%						

Duplicate(B180933-DUP1)			Extracted - 10/15/18 11:41 Analyzed - 10/15/18 17:41					
Analyte	Result	Units	Spike Level	Source Result	%REC	%REC Limits	RPD	RPD Limit
d9-THC (d9-Tetrahydrocannabinol)	6.87	%		6.82			0.747	20
d8-THC (d8-Tetrahydrocannabinol)	< LOQ	%		< LOQ				20
THCA (d9-Tetrahydrocannabinolic Acid)	77.38	%		77.81			0.555	20
CBD (Cannabidiol)	< LOQ	%		< LOQ				20
CBDA (Cannabidiolic Acid)	0.21	%		0.21			1.92	20
CBN (Cannabinol)	< LOQ	%		< LOQ				20
CBG (Cannabigerol)	0.20	%		0.20			1.16	20
CBGA (Cannabigerolic Acid)	0.92	%		0.92			0.106	20
CBDV (Cannabidivarin)	< LOQ	%		< LOQ				20
CBDVA (Cannabidivarinic Acid)	< LOQ	%		< LOQ				20
CBC (Cannabichromene)	0.18	%		0.18			1.55	20
THCV (Tetrahydrocannabivarin)	< LOQ	%		< LOQ				20



Brian Weigel
Lab Director

These results relate only to the sample included on this report. The report may not be reproduced except in full, without the written permission of SC Laboratories. Samples tested in accordance with Oregon Administrative Rules, TNI 2009 Standard and SC Laboratories quality assurance plan unless otherwise noted.

Quality Control Potency (Continued)

Batch: B180933 - Potency/Terpenes (Continued)

LCS(B180933-BS1)		Extracted - 10/15/18 11:41 Analyzed - 10/15/18 17:25						
Analyte	Result	Units	Spike Level	Source Result	%REC	%REC Limits	RPD	RPD Limit
d9-THC (d9-Tetrahydrocannabinol)	0.19	%	0.200		96.0	80-120		
THCA (d9-Tetrahydrocannabinolic Acid)	0.20	%	0.200		100	80-120		
CBD (Cannabidiol)	0.20	%	0.200		97.8	80-120		
CBN (Cannabinol)	0.18	%	0.200		91.8	80-120		



Brian Weigel
Lab Director

These results relate only to the sample included on this report. The report may not be reproduced except in full, without the written permission of SC Laboratories. Samples tested in accordance with Oregon Administrative Rules, TNI 2009 Standard and SC Laboratories quality assurance plan unless otherwise noted.