

OM Extracts, LLC

KR Order: M200368-13_14

Metric Batch: 1A4010300014ADD000021281

Batch#: 200227-SUVER; Batch Size: 1399g

Lic. # 030-10051970949

Ordered: 02/28/2020; Sampled: 02/28/2020; Completed: 03/03/2020

Sample collection: OAR 333-064-100

Batch samples: Cannabinoid Potency Analysis

Sample	EVIO Lab ID	OAR 333-007-0430 Potency							
		Total THC (mg/g)	Total CBD (mg/g)	CBGA (mg/g)	CBG (mg/g)	CBN (mg/g)	CBC (mg/g)	CBDVA (mg/g)	CBDV (mg/g)
Feco Bulk - Suver Haze	M200368-13	21.21	518.14	8.98	3.19	<LOQ	4.47	<LOQ	<LOQ
Feco Bulk - Suver Haze FD	M200368-14	20.52	499.23	8.59	3.10	<LOQ	4.31	<LOQ	<LOQ
	Average	20.87	508.69	8.79	3.15	<LOQ	4.39	<LOQ	<LOQ
	RPD	3.31%	3.72%	4.44%	2.86%	N/A	3.64%	N/A	N/A
	Total THC RPD:	PASS							

Potency Analytical Batch ID : M20B157

Notes: Total THC = THCa x 0.877 + D9-THC; Total CBD = CBDA x 0.877 + CBD. Cannabinoid method: HPLC-UV, SOP.T.40.020; LCS recoveries for all analytes 70 – 130%; Replicate recoveries <20% RSD; Sample and solvent blanks <LOQ (or ND); LOQ = Limit of Quantitation; NA = Not Applicable.

References: Kenevir Research lab reports

2002KR0183.1124 & 2002KR0183.1125


 540 E. Vilas Rd., Suite F
 Central Point, OR 97502
 www.kenevirresearch.com
 541.668.7444



 Stephanie Moon
 Lab Director

This report shall not be reproduced, unless in its entirety, without written approval from EVIO Labs, Inc., and Kenevir Research. This report is a Kenevir Research certification. The results relate only to the material or product analyzed. Test results are confidential unless explicitly waived otherwise. Void after 1 year from test end date. Cannabinoid content of batch material may vary depending on sampling error. Sampling method: EVIO-SOP-018; ORELAP-SOP-002.

EVIO Labs Medford (pka Kenevir Research)
 540 East Vilas Road, Suite F, Central Point, OR 97502
 541-668-7444 / OLCC 010-1001626980D / www.EVIOLabs.com

Feco Bulk - Suver Haze
 OM Extracts, LLC
 030-10051970949



Confident Cannabis ID: 2002KR0183.1124
Sample ID: M200368-13
Matrix: Extract/Concentrate
METRC Batch #: 1A4010300014ADD000021281
Sampling Method/SOP: SOP.T.20.010
Date Sampled: 2/28/2020 9:00:00AM
Date Accepted: 02/28/20
Harvest/Process Lot ID: 1281

Batch ID: 200227-SUVER
Batch Size (g): 1399g
Unit for Sale: 1g
Harvest/Production Date: 2-27-20

Cannabinoid Analysis

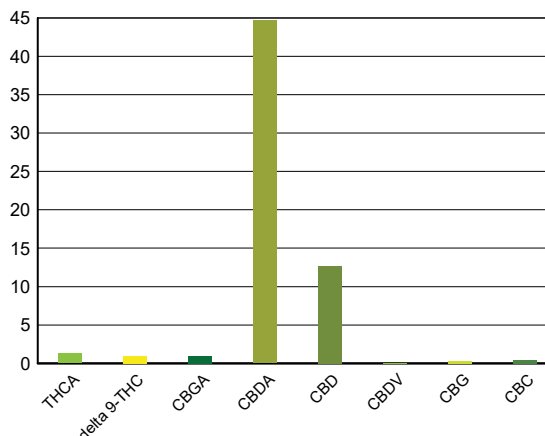
Date/Time Extracted: 02/28/20 10:39
 Date/Time Analyzed: 02/29/20 08:54

Analysis Method/SOP: SOP.T.40.020

Cannabinoids	LOQ(%)	mg/g	% weight	Cannabinoid Profile
--------------	--------	------	----------	---------------------

Total THC ((THCA*0.877)+Δ9THC)		21.21	2.121	
Total CBD ((CBDA*0.877)+CBD)		518.14	51.814	

THCA	0.100	12.90	1.29
delta 9-THC	0.100	9.90	0.990
delta 8-THC	0.100	< LOQ	< LOQ
THCV	0.100	< LOQ	< LOQ
CBGA	0.100	8.98	0.898
CBDA	0.100	446.00	44.6
CBD	0.100	127.00	12.7
CBDV	0.100	< LOQ	< LOQ
CBN	0.100	< LOQ	< LOQ
CBG	0.100	3.19	0.319
CBC	0.100	4.47	0.447
THCV-A	0.100	< LOQ	< LOQ
CBDV-A	0.100	2.01	0.201
Sum of tested Cannabinoids	0.100	636.00	63.6



"Total THC" and "Total CBD" are calculated values and are an Oregon reporting requirement (OAR 333-064-0100). For Cannabinoid analysis, only delta 9-THC, THCA, CBD, CBDA are ORELAP accredited analytes. Cannabinoid values reported for plant matter are dry weight corrected; Oregon Water Activity action level is 0.65Aw and Oregon Moisture Content action level is 15%. Samples above limit will be highlighted RED; FD = Field Duplicate; LOQ = Limit of Quantitation.

Stephanie Moon
 Laboratory Director - 3/5/2020

EVIO Labs Medford (pka Kenevir Research)
 540 East Vilas Road, Suite F, Central Point, OR 97502
 541-668-7444 / OLCC 010-1001626980D / www.EVIOLabs.com

FOR INFORMATIONAL USE ONLY - NOT FOR REGULATORY PURPOSES

Feco Bulk - Suver Haze

OM Extracts, LLC

030-10051970949

Sample ID: M200368-13 METRC Batch #: 1A4010300014ADD000021281

Matrix: Extract/Concentrate

Date Sampled: 02/28/20 09:00

Date Accepted: 02/28/20

Batch ID: 200227-SUVER

Batch Size: 1399g

Sampling Method/SOP: SOP.T.20.010

Terpene Analysis

Date/Time Extracted: 03/04/20 11:55

Analysis Method/SOP: SOP.T.40.092

Date/Time Analyzed: 03/05/20 09:24

Analyte	LOQ (%)	Mass (mg/g)	Mass (%)	Analyte	LOQ (%)	Mass (mg/g)	Mass (%)
alpha-Pinene	0.500	3.05	0.305	beta-Pinene	0.500	< LOQ	< LOQ
Camphene	0.500	< LOQ	< LOQ	Sabinene	0.500	< LOQ	< LOQ
Sabinene hydrate	0.500	< LOQ	< LOQ	beta-Myrcene	0.500	7.17	0.717
p-Mentha-1,5-diene	0.500	< LOQ	< LOQ	(+)-3-Carene	0.500	< LOQ	< LOQ
alpha-Terpinene	0.500	< LOQ	< LOQ	gamma-Terpinene	0.500	< LOQ	< LOQ
Limonene	0.500	0.854	0.0854	Eucalyptol	0.500	< LOQ	< LOQ
Guaiol	0.500	1.86	0.186	Terpinolene	0.500	< LOQ	< LOQ
Linalool	0.500	0.831	0.0831	Camphor	0.500	< LOQ	< LOQ
(+)-Camphor	0.500	< LOQ	< LOQ	(-)-Camphor	0.500	< LOQ	< LOQ
Isopulegol	0.500	< LOQ	< LOQ	Isoborneol	0.500	< LOQ	< LOQ
Borneol	0.500	< LOQ	< LOQ	Hexahydrothymol	0.500	< LOQ	< LOQ
Geraniol	0.500	< LOQ	< LOQ	(+)-Pulegone	0.500	< LOQ	< LOQ
Nerol	0.500	< LOQ	< LOQ	cis-Nerolidol	0.500	< LOQ	< LOQ
trans-Nerolidol	0.500	0.584	0.0584	Geranyl acetate	0.500	< LOQ	< LOQ
alpha-Cedrene	0.500	< LOQ	< LOQ	trans-Caryophyllene	0.500	7.29	0.729
Caryophyllene Oxide	0.500	0.559	0.0559	alpha-Humulene	0.500	3.21	0.321
Valencene	0.500	< LOQ	< LOQ	alpha-Farnesene	0.500	2.78	0.278
beta-Farnesene	0.500	5.88	0.588	Cedrol	0.500	< LOQ	< LOQ
alpha-Bisabolol	0.500	3.42	0.342	Fenchone	0.500	< LOQ	< LOQ
Fenchyl Alcohol	0.500	< LOQ	< LOQ	trans, beta- Ocimene	0.500	< LOQ	< LOQ
beta, cis- Ocimene	0.500	1.22	0.122	Terpineol	0.500	< LOQ	< LOQ
Total (Sum):						38.71	3.87

Analysis performed on GCMS with confirmation ion identification. Terpene analysis is not ORELAP accredited. Results reported as wet weight, or as is. LOQ = Limit of Quantitation. Terpene analysis performed in conjunction with EVIO Labs Portland.



Stephanie Moon
 Laboratory Director - 3/5/2020

Page 2 of 10

EVIO Labs Medford (pka Kenevir Research)
540 East Vilas Road, Suite F, Central Point, OR 97502
541-668-7444 / OLCC 010-1001626980D / www.EVIOLabs.com

Feco Bulk - Suer Haze

OM Extracts, LLC

030-10051970949

Sample ID: M200368-13

Matrix: Extract/Concentrate

METRC Batch #:

1A4010300014ADD000021281

Date Sampled: 02/28/20 09:00

Date Accepted: 02/28/20

Batch ID: 200227-SUVER

Batch Size: 1399g

Sampling Method/SOP: SOP.T.20.010

Pesticides

Date/Time Extracted: 02/28/20 10:40

Date/Time Analyzed: 2/29/2020 12:08:52AM

Analysis Method/SOP: SOP.T.40.050 / SOP.T.40.051

Analyte	LOQ	Action Level	Result	Units	Type
Abamectin	0.250	0.5	< LOQ	ppm	
Acephate	0.200	0.4	< LOQ	ppm	Organophosphate insecticide
Acequinocyl	1.00	2	< LOQ	ppm	
Acetamiprid	0.100	0.2	< LOQ	ppm	Neonicotinoid insecticide
Aldicarb	0.200	0.4	< LOQ	ppm	Carbamate insecticide
Azoxystrobin	0.100	0.2	< LOQ	ppm	
Bifenazate	0.100	0.2	< LOQ	ppm	Unclassified insecticide
Bifenthrin	0.100	0.2	< LOQ	ppm	
Boscalid	0.200	0.4	< LOQ	ppm	Anilide fungicide
Carbaryl	0.100	0.2	< LOQ	ppm	Carbamate insecticide
Carbofuran	0.100	0.2	< LOQ	ppm	Carbamate insecticide
Chlorantraniliprole	0.100	0.2	< LOQ	ppm	Anthranilic diamide insecticide
Chlorfenapyr	0.500	1	< LOQ	ppm	Pyrazole insecticide
Chlorpyrifos	0.100	0.2	< LOQ	ppm	Organophosphate insecticide
Clofentezine	0.100	0.2	< LOQ	ppm	
Cyfluthrin	0.500	1	< LOQ	ppm	
Cypermethrin	0.500	1	< LOQ	ppm	
Daminozide	0.500	1	< LOQ	ppm	
DDVP (Dichlorvos)	0.500	1	< LOQ	ppm	
Diazinon	0.100	0.2	< LOQ	ppm	Organophosphate insecticide
Dimethoate	0.100	0.2	< LOQ	ppm	
Ethoprophos	0.100	0.2	< LOQ	ppm	
Etofenprox	0.200	0.4	< LOQ	ppm	
Etoxazole	0.100	0.2	< LOQ	ppm	Unclassified miticide
Fenoxycarb	0.100	0.2	< LOQ	ppm	
Fenproximate	0.200	0.4	< LOQ	ppm	
Fipronil	0.200	0.4	< LOQ	ppm	Pyrazole insecticide
Fonicamid	0.500	1	< LOQ	ppm	Pyridinecarboxamide insecticide
Fludioxonil	0.200	0.4	< LOQ	ppm	non-systemic fungicide
Hexythiazox	0.500	1	< LOQ	ppm	
Imazalil	0.100	0.2	< LOQ	ppm	Azole fungicide
Imidacloprid	0.200	0.4	< LOQ	ppm	Neonicotinoid insecticide
Kresoxim-methyl	0.200	0.4	< LOQ	ppm	
Malathion	0.100	0.2	< LOQ	ppm	
Metalaxyl	0.100	0.2	< LOQ	ppm	
Methiocarb	0.100	0.2	< LOQ	ppm	Carbamate insecticide



Stephanie Moon
Laboratory Director - 3/5/2020

EVIO Labs Medford (pka Kenevir Research)
540 East Vilas Road, Suite F, Central Point, OR 97502
541-668-7444 / OLCC 010-1001626980D / www.EVIOLabs.com

Feco Bulk - Suver Haze

OM Extracts, LLC
030-10051970949

Sample ID: M200368-13
Matrix: Extract/Concentrate

METRC Batch #:
 1A4010300014ADD000021281

Date Sampled: 02/28/20 09:00
Date Accepted: 02/28/20
Batch ID: 200227-SUVER
Batch Size: 1399g
Sampling Method/SOP: SOP.T.20.010

Pesticides

Date/Time Extracted: 02/28/20 10:40

Date/Time Analyzed: 2/29/2020 12:08:52AM

Analysis Method/SOP: SOP.T.40.050 / SOP.T.40.051

Analyte	LOQ	Action Level	Result	Units	Type
Methomyl	0.200	0.4	< LOQ	ppm	Carbamate insecticide
Methyl parathion	0.100	0.2	< LOQ	ppm	
MGK-264	0.100	0.2	< LOQ	ppm	
Myclobutanil	0.100	0.2	< LOQ	ppm	Azole fungicide
Naled	0.250	0.5	< LOQ	ppm	
Oxamyl	0.500	1	< LOQ	ppm	Carbamate insecticide
Paclobutrazol	0.200	0.4	< LOQ	ppm	Azole plant growth regulator
Permethrins	0.100	0.2	< LOQ	ppm	
Phosmet	0.100	0.2	< LOQ	ppm	Organophosphate insecticide
Piperonyl butoxide	1.00	2	< LOQ	ppm	
Prallethrin	0.100	0.2	< LOQ	ppm	
Propiconazole	0.200	0.4	< LOQ	ppm	
Propoxur	0.100	0.2	< LOQ	ppm	Carbamate insecticide
Pyrethrins	0.500	1	< LOQ	ppm	
Pyridaben	0.100	0.2	< LOQ	ppm	Unclassified insecticide
Spinosad	0.100	0.2	< LOQ	ppm	Spinosyn insecticide
Spiromesifen	0.100	0.2	< LOQ	ppm	Keto-enol insecticide
Spirotetramat	0.100	0.2	< LOQ	ppm	Keto-enol insecticide
Spiroxamine	0.200	0.4	< LOQ	ppm	Unclassified fungicide
Tebuconazole	0.200	0.4	< LOQ	ppm	
Thiacloprid	0.100	0.2	< LOQ	ppm	
Thiamethoxam	0.100	0.2	< LOQ	ppm	Neonicotinoid insectide
Trifloxystrobin	0.100	0.2	< LOQ	ppm	Strobin fungicide

Results above the action level fail Oregon state testing requirements and will be highlighted RED.

LOQ= Limit of Quantitation; PPM= Parts per million; ND= Not detected; NT= Not tested; AC= Above calibration range. PASS/FAIL status based on OAR 333-007.



Stephanie Moon
 Laboratory Director - 3/5/2020

EVIO Labs Medford (pka Kenevir Research)
 540 East Vilas Road, Suite F, Central Point, OR 97502
 541-668-7444 / OLCC 010-1001626980D / www.EVIOLabs.com

Feco Bulk - Suver Haze

OM Extracts, LLC

030-10051970949

Sample ID: M200368-13 METRC Batch #: 1A4010300014ADD000021281

Matrix: Extract/Concentrate

Date Sampled: 02/28/20 09:00

Date Accepted: 02/28/20

Batch ID: 200227-SUVER

Batch Size: 1399g

Sampling Method/SOP: SOP.T.20.010

Residual Solvents

Analyte	LOQ	Action Level	Result	Units
Butanes	250	5000 ³	< LOQ	ppm
n-Butane	250	5000	< LOQ	ppm
iso-Butane	250	5000	< LOQ	ppm
Hexanes	174	290 ⁴	< LOQ	ppm
n-Hexane	174	290	< LOQ	ppm
2-Methylpentane	174	290	< LOQ	ppm
3-Methylpentane	174	290	< LOQ	ppm
2,2-Dimethylbutane	174	290	< LOQ	ppm
2,3-Dimethylbutane	174	290	< LOQ	ppm
Pentanes	1400	5000 ⁵	< LOQ	ppm
n-Pentane	1400	5000	< LOQ	ppm
iso-Pentane	1400	5000	< LOQ	ppm
Neopentane	250	5000	< LOQ	ppm
Xylenes	1302	2170	< LOQ	ppm
1,2-Dimethylbenzene	1302	2170	< LOQ	ppm
1,3-Dimethylbenzene	1302	2170	< LOQ	ppm
1,4-Dimethylbenzene	1302	2170	< LOQ	ppm
Xylenes MP	1302	2170	< LOQ	ppm
Ethyl benzene	1302	NA	< LOQ	ppm
2-Propanol (IPA)	1400	5000	< LOQ	ppm
Acetone	1400	5000	< LOQ	ppm
Acetonitrile	246	410	< LOQ	ppm
Benzene	1.2	2	< LOQ	ppm
Methanol	1000	3000	< LOQ	ppm
Propane	250	5000	< LOQ	ppm
Toluene	534	890	< LOQ	ppm
Dichloromethane	360	600	< LOQ	ppm
1,4-Dioxane	228	380	< LOQ	ppm
2-Butanol	1400	5000	< LOQ	ppm
2-Ethoxyethanol	96	160	< LOQ	ppm
Cumene	42	70	< LOQ	ppm
Cyclohexane	2278	3880	< LOQ	ppm
Ethyl acetate	1400	5000	< LOQ	ppm
Ethyl ether	1400	5000	< LOQ	ppm
Ethylene glycol	372	620	< LOQ	ppm
Ethylene oxide	30	50	< LOQ	ppm
Heptane	1400	5000	< LOQ	ppm
Isopropyl acetate	1400	5000	< LOQ	ppm
Tetrahydrofuran	432	720	< LOQ	ppm

Date/Time Extracted: 02/28/20 09:59

Date/Time Analyzed: 02/29/20 00:04

Analysis Method/SOP: SOP.T.40.031

3 - Total butanes are calculated as sum of n-butanes (CAS# 106-97-8) and iso-butane (CAS# 75-28-5)

4 - Total hexanes are calculated as sum of n-hexane (CAS# 110-54-3), 2-methylpentane (CAS# 107-83-5), 3-methylpentane (CAS# 96-14-0), 2,2-dimethylbutane (CAS# 75-83-2), 2,3-dimethylbutane (CAS# 79-29-8)

5 - Total pentanes are calculated as sum of n-pentane (CAS# 109-66-0), iso-pentane (CAS# 78-78-4), and neo-pentane (CAS# 463-82-1)

6 - Total xylenes are calculated as 1,2-dimethylbenzene (CAS# 95-47-6), 1,3-dimethylbenzene (CAS# 106-42-3), and 1-4-dimethylbenzene (CAS# 106-42-3)

7 - Ethanol is not regulated under OAR-333-007-0410.

Results above the action level fail Oregon state testing requirements and will be highlighted **RED**. LOQ=Limit of Quantitation; PPM=Parts per million; ND=Not detected; NT=Not tested; AC=Above calibration range. PASS/FAIL status based on OAR 333-007. Analysis performed in conjunction with EVIO Labs Portland.



Stephanie Moon
 Laboratory Director - 3/5/2020