

EVIO Labs Medford (pka Kenevir Research)
 540 East Vilas Road, Suite F, Central Point, OR 97502
 541-668-7444 / OLCC 010-1001626980D / www.EVIOLabs.com

Tincture -Lifter CBD
 OM Extracts, LLC
 030-10051970949



Confident Cannabis ID: 2004KR0010.1768

Sample ID: M200558-01

Matrix: Tincture

METRC Batch #: 1A4010300014ADD000021748

Sampling Method/SOP: SOP.T.20.010

Date Sampled: 4/2/2020 9:00:00AM

Date Accepted: 04/02/20

Harvest/Process Lot ID: 4220-Tincture Lifter

Batch ID: 1748

Batch Size (g): 38000g

Unit for Sale: 1oz

Harvest/Production Date: 4-2-20

Cannabinoid Analysis

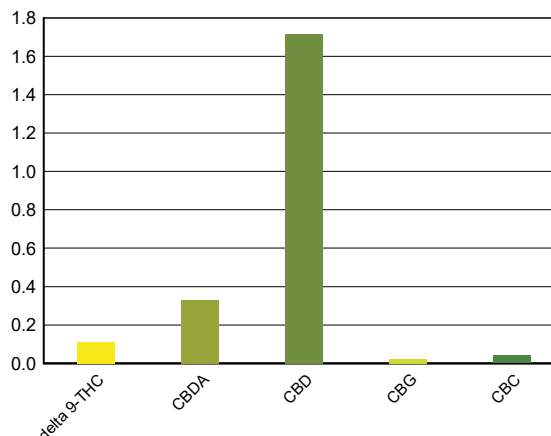
Date/Time Extracted: 04/03/20 08:06
 Date/Time Analyzed: 04/04/20 01:44

Analysis Method/SOP: SOP.T.40.020

Cannabinoids	LOQ(%)	mg/g	% weight	Cannabinoid Profile
--------------	--------	------	----------	---------------------

Total THC ((THCA*0.877)+Δ9THC)		1.13	0.113	
Total CBD ((CBDA*0.877)+CBD)		20.09	2.009	

THCA	0.040	< LOQ	< LOQ
delta 9-THC	0.040	1.13	0.113
delta 8-THC	0.040	< LOQ	< LOQ
THCV	0.040	< LOQ	< LOQ
CBGA	0.040	< LOQ	< LOQ
CBDA	0.040	3.30	0.330
CBD	0.040	17.20	1.72
CBDV	0.040	< LOQ	< LOQ
CBN	0.040	< LOQ	< LOQ
CBG	0.040	< LOQ	< LOQ
CBC	0.040	0.41	0.041
THCV-A	0.040	< LOQ	< LOQ
CBDV-A	0.040	< LOQ	< LOQ
CBCA	0.040	< LOQ	< LOQ
Sum of tested Cannabinoids	0.040	21.60	2.16



"Total THC" and "Total CBD" are calculated values and are an Oregon reporting requirement (OAR 333-064-0100). For Cannabinoid analysis, only delta 9-THC, THCA, CBD, CBDA are ORELAP accredited analytes. Cannabinoid values reported for plant matter are dry weight corrected; Oregon Water Activity action level is 0.65Aw and Oregon Moisture Content action level is 15%. Samples above limit will be highlighted RED; FD = Field Duplicate; LOQ = Limit of Quantitation.

Stephanie Moon
 Laboratory Director - 4/7/2020

EVIO Labs Medford (pka Kenevir Research)
 540 East Vilas Road, Suite F, Central Point, OR 97502
 541-668-7444 / OLCC 010-1001626980D / www.EVIOLabs.com

Quality Control

Batch: M20D016 - SOP.T.30.050 Prep for Cannabinoids

Blank(M20D016-BLK1)			Extracted: 04/03/20 08:06		Analyzed: 04/04/20 00:38		
Analyte	Result	LOQ	Recovery Limits	Analyte	Result	LOQ	Recovery Limits
THCA	< LOQ	0.040 (%)	< LOQ	delta 9-THC	< LOQ	0.040 (%)	< LOQ
delta 8-THC	< LOQ	0.040 (%)	< LOQ	THCV-A	< LOQ	0.040 (%)	< LOQ
THCV	< LOQ	0.040 (%)	< LOQ	CBDA	< LOQ	0.040 (%)	< LOQ
CBD	< LOQ	0.040 (%)	< LOQ	CBDV-A	< LOQ	0.040 (%)	< LOQ
CBDV	< LOQ	0.040 (%)	< LOQ	CBG	< LOQ	0.040 (%)	< LOQ
CBGA	< LOQ	0.040 (%)	< LOQ	CBN	< LOQ	0.040 (%)	< LOQ
CBC	< LOQ	0.040 (%)	< LOQ	Sum of tested Cannabinoid:	< LOQ	0.040 (%)	< LOQ

LCS(M20D016-BS1)			Extracted: 04/03/20 08:06		Analyzed: 04/04/20 00:54		
Analyte	% Recovery	LOQ	Recovery Limits	Analyte	% Recovery	LOQ	Recovery Limits
THCA	107	(%)	70-130	delta 9-THC	96.5	(%)	70-130
CBDA	101	(%)	70-130	CBD	99.3	(%)	70-130



Stephanie Moon
 Laboratory Director - 4/7/2020