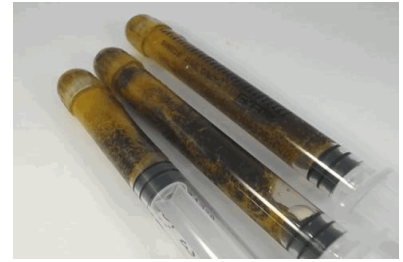


EVIO Labs Medford (pka Kenevir Research)  
 540 East Vilas Road, Suite F, Central Point, OR 97502  
 541-668-7444 / OLCC 010-1001626980D / www.EVIOLabs.com

**Raspberry Cola -CBD- FD**  
 OM Extracts, LLC  
 030-10051970949



Confident Cannabis ID: 2004KR0009.1757

Sample ID: M200557-02

Matrix: Other

METRC Batch #: 1A4010300014ADD000022276

Sampling Method/SOP: SOP.T.20.010

Date Sampled: 4/2/2020 9:00:00AM

Date Accepted: 04/02/20

Harvest/Process Lot ID: 4220RCC

Batch ID: 2276

Batch Size (g): 1399g

Unit for Sale: 1gram

Harvest/Production Date: 4-2-20

## Cannabinoid Analysis

Date/Time Extracted: 04/03/20 08:08  
 Date/Time Analyzed: 04/03/20 18:37

Analysis Method/SOP: SOP.T.40.020

Cannabinoids	LOQ(%)	mg/g	% weight	Cannabinoid Profile
<b>Total THC</b> ((THCA*0.877)+Δ9THC)		<b>226.63</b>	<b>22.663</b>	
<b>Total CBD</b> ((CBDA*0.877)+CBD)		<b>389.36</b>	<b>38.936</b>	
THCA	0.100	125.00	12.5	
delta 9-THC	0.100	117.00	11.7	
delta 8-THC	0.100	< LOQ	< LOQ	
THCV	0.100	1.31	0.131	
CBGA	0.100	11.60	1.16	
CBDA	0.100	306.00	30.6	
CBD	0.100	121.00	12.1	
CBDV	0.100	< LOQ	< LOQ	
CBN	0.100	< LOQ	< LOQ	
CBG	0.100	5.37	0.537	
CBC	0.100	9.64	0.964	
THCV-A	0.100	1.90	0.190	
CBDV-A	0.100	2.97	0.297	
CBCA	0.100	24.30	2.43	
Sum of tested Cannabinoids	0.100	725.00	72.5	

"Total THC" and "Total CBD" are calculated values and are an Oregon reporting requirement (OAR 333-064-0100). For Cannabinoid analysis, only delta 9-THC, THCA, CBD, CBDA are ORELAP accredited analytes. Cannabinoid values reported for plant matter are dry weight corrected; Oregon Water Activity action level is 0.65Aw and Oregon Moisture Content action level is 15%. Samples above limit will be highlighted RED; FD = Field Duplicate; LOQ = Limit of Quantitation.

Stephanie Moon  
 Laboratory Director - 4/9/2020

EVIO Labs Medford (pka Kenevir Research)  
 540 East Vilas Road, Suite F, Central Point, OR 97502  
 541-668-7444 / OLCC 010-1001626980D / www.EVIOLabs.com

FOR INFORMATIONAL USE ONLY - NOT FOR REGULATORY PURPOSES

## Raspberry Cola -CBD- FD

OM Extracts, LLC

030-10051970949

Sample ID: M200557-02 METRC Batch #: 1A4010300014ADD000022276

Matrix: Other

Date Sampled: 04/02/20 09:00

Date Accepted: 04/02/20

Batch ID: 2276

Batch Size: 1399g

Sampling Method/SOP: SOP.T.20.010

### Terpene Analysis

Date/Time Extracted: 04/07/20 10:38

Analysis Method/SOP: SOP.T.40.092

Date/Time Analyzed: 04/08/20 10:56

Analyte	LOQ (%)	Mass (mg/g)	Mass (%)	Analyte	LOQ (%)	Mass (mg/g)	Mass (%)
alpha-Pinene	0.500	2.45	0.245	beta-Pinene	0.500	< LOQ	< LOQ
Camphene	0.500	< LOQ	< LOQ	Sabinene	0.500	< LOQ	< LOQ
Sabinene hydrate	0.500	< LOQ	< LOQ	beta-Myrcene	0.500	3.42	0.342
p-Mentha-1,5-diene	0.500	< LOQ	< LOQ	(+)-3-Carene	0.500	< LOQ	< LOQ
alpha-Terpinene	0.500	< LOQ	< LOQ	gamma-Terpinene	0.500	< LOQ	< LOQ
Limonene	0.500	1.74	0.174	Eucalyptol	0.500	< LOQ	< LOQ
Guaiol	0.500	1.16	0.116	Terpinolene	0.500	< LOQ	< LOQ
Linalool	0.500	0.754	0.0754	Camphor	0.500	< LOQ	< LOQ
(+)-Camphor	0.500	< LOQ	< LOQ	(-)-Camphor	0.500	< LOQ	< LOQ
Isopulegol	0.500	< LOQ	< LOQ	Isoborneol	0.500	< LOQ	< LOQ
Borneol	0.500	< LOQ	< LOQ	Hexahydrothymol	0.500	< LOQ	< LOQ
Geraniol	0.500	< LOQ	< LOQ	(+)-Pulegone	0.500	< LOQ	< LOQ
Nerol	0.500	< LOQ	< LOQ	cis-Nerolidol	0.500	< LOQ	< LOQ
trans-Nerolidol	0.500	< LOQ	< LOQ	Geranyl acetate	0.500	< LOQ	< LOQ
alpha-Cedrene	0.500	< LOQ	< LOQ	trans-Caryophyllene	0.500	5.12	0.512
Caryophyllene Oxide	0.500	< LOQ	< LOQ	alpha-Humulene	0.500	2.22	0.222
Valencene	0.500	< LOQ	< LOQ	alpha-Farnesene	0.500	< LOQ	< LOQ
beta-Farnesene	0.500	< LOQ	< LOQ	Cedrol	0.500	< LOQ	< LOQ
alpha-Bisabolol	0.500	2.46	0.246	Fenchone	0.500	< LOQ	< LOQ
Fenchyl Alcohol	0.500	0.585	0.0585	trans, beta- Ocimene	0.500	< LOQ	< LOQ
beta, cis- Ocimene	0.500	< LOQ	< LOQ	Terpineol	0.500	0.681	0.0681
Total (Sum):						20.59	2.06

Analysis performed on GCMS with confirmation ion identification. Terpene analysis is not ORELAP accredited. Results reported as wet weight, or as is. LOQ = Limit of Quantitation. Terpene analysis performed in conjunction with EVIO Labs Portland.



Stephanie Moon  
 Laboratory Director - 4/9/2020

EVIO Labs Medford (pka Kenevir Research)  
 540 East Vilas Road, Suite F, Central Point, OR 97502  
 541-668-7444 / OLCC 010-1001626980D / www.EVIOLabs.com

## Raspberry Cola -CBD- FD

OM Extracts, LLC

030-10051970949

Sample ID: M200557-02

Matrix: Other

METRC Batch #:

1A4010300014ADD000022276

Date Sampled: 04/02/20 09:00

Date Accepted: 04/02/20

Batch ID: 2276

Batch Size: 1399g

Sampling Method/SOP: SOP.T.20.010

### Pesticides

Date/Time Extracted: 04/02/20 16:35

Date/Time Analyzed: 4/2/2020 9:39:40PM

Analysis Method/SOP: SOP.T.40.050 / SOP.T.40.051

Analyte	LOQ	Action Level	Result	Units	Type
Abamectin	0.250	0.5	< LOQ	ppm	
Acephate	0.200	0.4	< LOQ	ppm	Organophosphate insecticide
Acequinocyl	1.00	2	< LOQ	ppm	
Acetamiprid	0.100	0.2	< LOQ	ppm	Neonicotinoid insecticide
Aldicarb	0.200	0.4	< LOQ	ppm	Carbamate insecticide
Azoxystrobin	0.100	0.2	< LOQ	ppm	
Bifenazate	0.100	0.2	< LOQ	ppm	Unclassified insecticide
Bifenthrin	0.100	0.2	< LOQ	ppm	
Boscalid	0.200	0.4	< LOQ	ppm	Anilide fungicide
Carbaryl	0.100	0.2	< LOQ	ppm	Carbamate insecticide
Carbofuran	0.100	0.2	< LOQ	ppm	Carbamate insecticide
Chlorantranilprole	0.100	0.2	< LOQ	ppm	Anthranilic diamide insecticide
Chlorfenapyr	0.500	1	< LOQ	ppm	Pyrazole insecticide
Chlorpyrifos	0.100	0.2	< LOQ	ppm	Organophosphate insecticide
Clofentezine	0.100	0.2	< LOQ	ppm	
Cyfluthrin	0.500	1	< LOQ	ppm	
Cypermethrin	0.500	1	< LOQ	ppm	
Daminozide	0.500	1	< LOQ	ppm	
DDVP (Dichlorvos)	0.500	1	< LOQ	ppm	
Diazinon	0.100	0.2	< LOQ	ppm	Organophosphate insecticide
Dimethoate	0.100	0.2	< LOQ	ppm	
Ethoprophos	0.100	0.2	< LOQ	ppm	
Etofenprox	0.200	0.4	< LOQ	ppm	
Etoxazole	0.100	0.2	< LOQ	ppm	Unclassified miticide
Fenoxycarb	0.100	0.2	< LOQ	ppm	
Fenpyroximate	0.200	0.4	< LOQ	ppm	
Fipronil	0.200	0.4	< LOQ	ppm	Pyrazole insecticide
Fonicamid	0.500	1	< LOQ	ppm	Pyridinecarboxamide insecticide
Fludioxonil	0.200	0.4	< LOQ	ppm	non-systemic fungicide
Hexythiazox	0.500	1	< LOQ	ppm	
Imazalil	0.100	0.2	< LOQ	ppm	Azole fungicide
Imidacloprid	0.200	0.4	< LOQ	ppm	Neonicotinoid insecticide
Kresoxim-methyl	0.200	0.4	< LOQ	ppm	
Malathion	0.100	0.2	< LOQ	ppm	
Metalaxyl	0.100	0.2	< LOQ	ppm	
Methiocarb	0.100	0.2	< LOQ	ppm	Carbamate insecticide



Stephanie Moon  
 Laboratory Director - 4/9/2020

EVIO Labs Medford (pka Kenevir Research)  
 540 East Vilas Road, Suite F, Central Point, OR 97502  
 541-668-7444 / OLCC 010-1001626980D / www.EVIOLabs.com

## Raspberry Cola -CBD- FD

OM Extracts, LLC  
 030-10051970949

Sample ID: M200557-02

Matrix: Other

METRC Batch #:

1A4010300014ADD000022276

Date Sampled: 04/02/20 09:00

Date Accepted: 04/02/20

Batch ID: 2276

Batch Size: 1399g

Sampling Method/SOP: SOP.T.20.010

### Pesticides

Date/Time Extracted: 04/02/20 16:35

Date/Time Analyzed: 4/2/2020 9:39:40PM

Analysis Method/SOP: SOP.T.40.050 / SOP.T.40.051

Analyte	LOQ	Action Level	Result	Units	Type
Methomyl	0.200	0.4	< LOQ	ppm	Carbamate insecticide
Methyl parathion	0.100	0.2	< LOQ	ppm	
MGK-264	0.100	0.2	< LOQ	ppm	
Myclobutanil	0.100	0.2	< LOQ	ppm	Azole fungicide
Naled	0.250	0.5	< LOQ	ppm	
Oxamyl	0.500	1	< LOQ	ppm	Carbamate insecticide
Paclobutrazol	0.200	0.4	< LOQ	ppm	Azole plant growth regulator
Permethrins	0.100	0.2	< LOQ	ppm	
Phosmet	0.100	0.2	< LOQ	ppm	Organophosphate insecticide
Piperonyl butoxide	1.00	2	< LOQ	ppm	
Prallethrin	0.100	0.2	< LOQ	ppm	
Propiconazole	0.200	0.4	< LOQ	ppm	
Propoxur	0.100	0.2	< LOQ	ppm	Carbamate insecticide
Pyrethrins	0.500	1	< LOQ	ppm	
Pyridaben	0.100	0.2	< LOQ	ppm	Unclassified insecticide
Spinosad	0.100	0.2	< LOQ	ppm	Spinosyn insecticide
Spiromesifen	0.100	0.2	< LOQ	ppm	Keto-enol insecticide
Spirotetramat	0.100	0.2	< LOQ	ppm	Keto-enol insecticide
Spiroxamine	0.200	0.4	< LOQ	ppm	Unclassified fungicide
Tebuconazole	0.200	0.4	< LOQ	ppm	
Thiacloprid	0.100	0.2	< LOQ	ppm	
Thiamethoxam	0.100	0.2	< LOQ	ppm	Neonicotinoid insectide
Trifloxystrobin	0.100	0.2	< LOQ	ppm	Strobin fungicide

Results above the action level fail Oregon state testing requirements and will be highlighted **RED**.

LOQ= Limit of Quantitation; PPM= Parts per million; ND= Not detected; NT= Not tested; AC= Above calibration range. PASS/FAIL status based on OAR 333-007.



Stephanie Moon  
 Laboratory Director - 4/9/2020

**EVIO Labs Medford (pka Kenevir Research)**  
**540 East Vilas Road, Suite F, Central Point, OR 97502**  
**541-668-7444 / OLCC 010-1001626980D / www.EVIOLabs.com**

## Raspberry Cola -CBD- FD

OM Extracts, LLC

030-10051970949

Sample ID: M200557-02

METRC Batch #: 1A4010300014ADD000022276

Matrix: Other

Date Sampled: 04/02/20 09:00

Date Accepted: 04/02/20

Batch ID: 2276

Batch Size: 1399g

Sampling Method/SOP: SOP.T.20.010

### Residual Solvents

Analyte	LOQ	Action Level	Result	Units
<b>Butanes</b>	250	5000 <sup>3</sup>	< LOQ	ppm
n-Butane	250	5000	< LOQ	ppm
iso-Butane	250	5000	< LOQ	ppm
<b>Hexanes</b>	174	290 <sup>4</sup>	< LOQ	ppm
n-Hexane	174	290	< LOQ	ppm
2-Methylpentane	174	290	< LOQ	ppm
3-Methylpentane	174	290	< LOQ	ppm
2,2-Dimethylbutane	174	290	< LOQ	ppm
2,3-Dimethylbutane	174	290	< LOQ	ppm
<b>Pentanes</b>	1400	5000 <sup>5</sup>	< LOQ	ppm
n-Pentane	1400	5000	< LOQ	ppm
iso-Pentane	1400	5000	< LOQ	ppm
Neopentane	250	5000	< LOQ	ppm
<b>Xylenes</b>	1302	2170	< LOQ	ppm
1,2-Dimethylbenzene	1302	2170	< LOQ	ppm
1,3-Dimethylbenzene	1302	2170	< LOQ	ppm
1,4-Dimethylbenzene	1302	2170	< LOQ	ppm
Xylenes MP	1302	2170	< LOQ	ppm
Ethyl benzene	1302	NA	< LOQ	ppm
2-Propanol (IPA)	1400	5000	< LOQ	ppm
Acetone	1400	5000	< LOQ	ppm
Acetonitrile	246	410	< LOQ	ppm
Benzene	1.2	2	< LOQ	ppm
Methanol	1000	3000	< LOQ	ppm
Propane	250	5000	< LOQ	ppm
Toluene	534	890	< LOQ	ppm
Dichloromethane	360	600	< LOQ	ppm
1,4-Dioxane	228	380	< LOQ	ppm
2-Butanol	1400	5000	< LOQ	ppm
2-Ethoxyethanol	96	160	< LOQ	ppm
Cumene	42	70	< LOQ	ppm
Cyclohexane	2278	3880	< LOQ	ppm
Ethyl acetate	1400	5000	< LOQ	ppm
Ethyl ether	1400	5000	< LOQ	ppm
Ethylene glycol	558	620	< LOQ	ppm
Ethylene oxide	30	50	< LOQ	ppm
Heptane	1400	5000	< LOQ	ppm
Isopropyl acetate	1400	5000	< LOQ	ppm
Tetrahydrofuran	432	720	< LOQ	ppm

Date/Time Extracted: 04/07/20 13:27

Date/Time Analyzed: 04/08/20 11:56

Analysis Method/SOP: SOP.T.40.031

**3** - Total butanes are calculated as sum of n-butanes (CAS# 106-97-8) and iso-butane (CAS# 75-28-5)

**4** - Total hexanes are calculated as sum of n-hexane (CAS# 110-54-3), 2-methylpentane (CAS# 107-83-5), 3-methylpentane (CAS# 96-14-0), 2,2-dimethylbutane (CAS# 75-83-2), 2,3-dimethylbutane (CAS# 79-29-8)

**5** - Total pentanes are calculated as sum of n-pentane (CAS# 109-66-0), iso-pentane (CAS# 78-78-4), and neo-pentane (CAS# 463-82-1)

**6** - Total xylenes are calculated as 1,2-dimethylbenzene (CAS# 95-47-6), 1,3-dimethylbenzene (CAS# 106-42-3), and 1-4-dimethylbenzene (CAS# 106-42-3)

**7** - Ethanol is not regulated under OAR-333-007-0410.

Results above the action level fail Oregon state testing requirements and will be highlighted **RED**. LOQ=Limit of Quantitation; PPM=Parts per million; ND=Not detected; NT=Not tested; AC=Above calibration range. PASS/FAIL status based on OAR 333-007. Analysis performed in conjunction with EVIO Labs Portland.



Stephanie Moon  
Laboratory Director - 4/9/2020